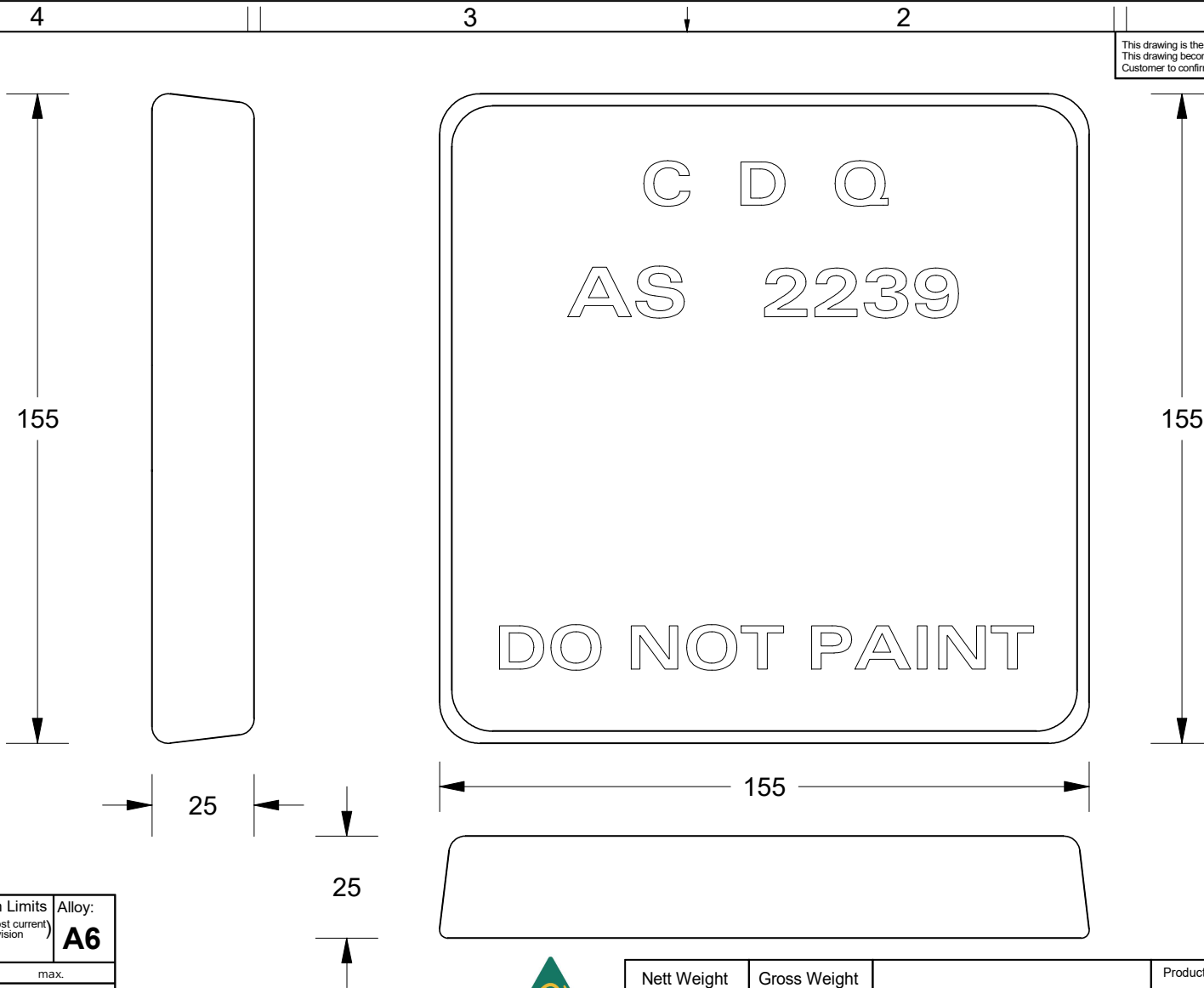


This drawing is the property of Cathodic Anodes Australasia. To be used with permission only.  
 This drawing becomes an uncontrolled document once issued as hard or electronic copy.  
 Customer to confirm current revision of drawing prior to ordering.



- Notes
1. Anodes are cast to comply with CAA's standard casting tolerances
  2. All sharp edges removed for safe handling
  3. Anode insert material to meet relevant Australian/International specifications

CDQ  
 CAST INDENTATION LETTERING

All dimensions are in mm (nominal)

Chemical Composition Limits		Alloy:
Standard: AS2239 (Most current revision)		<b>A6</b>
Aluminium		
Element	min.	max.
Zinc	2.0	6.0
Indium	0.01	0.02
Cadmium	-	0.005
Silicon	0.08	0.12
Iron	-	0.12
Magnesium	-	0.02
Titanium	-	0.02
Copper	-	0.006
Tin	-	0.02
Other Impurities		
- each	-	0.02
- total	-	0.05
Aluminium	remainder	



Rev	Details of Change(s)	Date	Drawn	Verified
1	Cathodic Diecasting Original	24 August 2011	R.N.	R.G.
2	2013 Catalogue Version (CAA Logo)	10 January 2014	R.N.	R.G.

Nett Weight	Gross Weight
Kg (nominal)	Kg (nominal)
<b>1.70</b>	<b>1.70</b>



Cathodic Anodes Australasia

[cathodicanodes.com.au](http://cathodicanodes.com.au)

Product	
<b>Aluminium Anode</b>	
Part no.	Scale
<b>CDA-1.5 (A6)</b>	<b>1 : 1.5</b>
Drawing No: <b>CD3147</b>	Rev Sheet
	<b>2 1 of 1</b>
Drawn by: R Northey Date: 10 JAN 2014	
Mould No: 51	