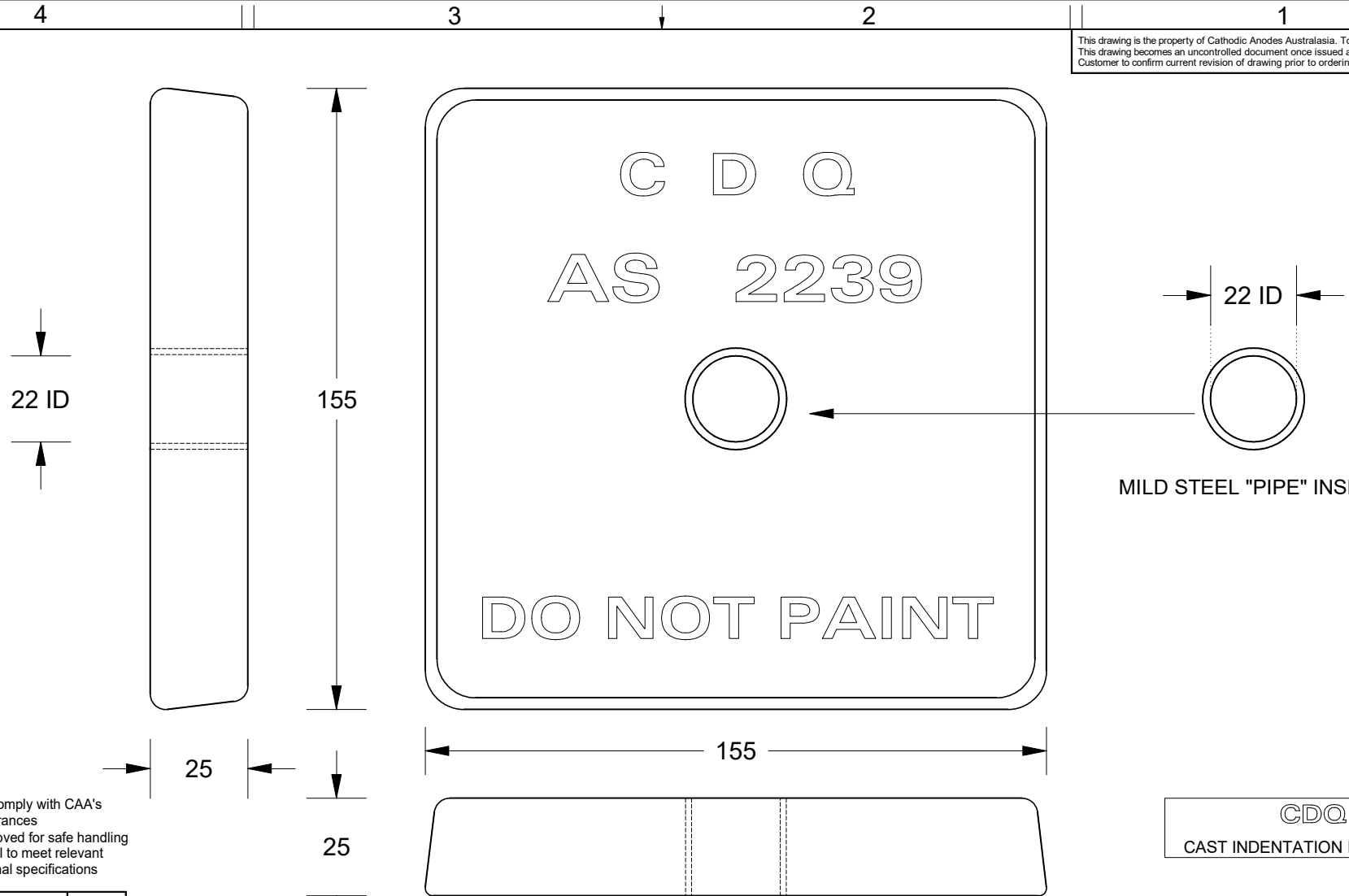


This drawing is the property of Cathodic Anodes Australasia. To be used with permission only. This drawing becomes an uncontrolled document once issued as hard or electronic copy. Customer to confirm current revision of drawing prior to ordering.



- Notes**
1. Anodes are cast to comply with CAA's standard casting tolerances
  2. All sharp edges removed for safe handling
  3. Anode insert material to meet relevant Australian/International specifications

Chemical Composition Limits			Alloy: <b>A1</b>
Standard: AS2239 (Most current revision)			
Element	min.	max.	
Aluminium			
Zinc	2.1	2.7	
Indium	0.017	0.025	
Cadmium	0.008	0.012	
Silicon	-	0.20	
Iron	-	0.12	
Copper	-	0.006	
Other Impurities			
- each	-	0.02	
- total	-	0.05	
Aluminium	remainder		



Rev	Details of Change(s)	Date	Nett Weight		Gross Weight	
			Kg (nominal)		Kg (nominal)	
			<b>1.67</b>		<b>1.70</b>	
1	Cathodic Diecasting Original	15 December 2009		<i>B.L.</i>	<i>R.G.</i>	
2	2013 Catalogue Version (CAA Logo)	10 January 2014		<i>R.N.</i>	<i>R.G.</i>	

**CAA**  
Cathodic Anodes Australasia  
[cathodicanodes.com.au](http://cathodicanodes.com.au)

Product <b>Aluminium Anode</b>			
Part no. <b>CDA-1.5H (A1)</b>		Scale <b>1 : 1.5</b>	
Drawing No: <b>CD3146</b>		Rev <b>2</b>	Sheet <b>1 of 1</b>
Drawn by: R Northey		Date: 10 JAN 2014	
Mould No: 51		Insert: In House	

All dimensions are in mm (nominal)

**CDQ**  
CAST INDENTATION LETTERING