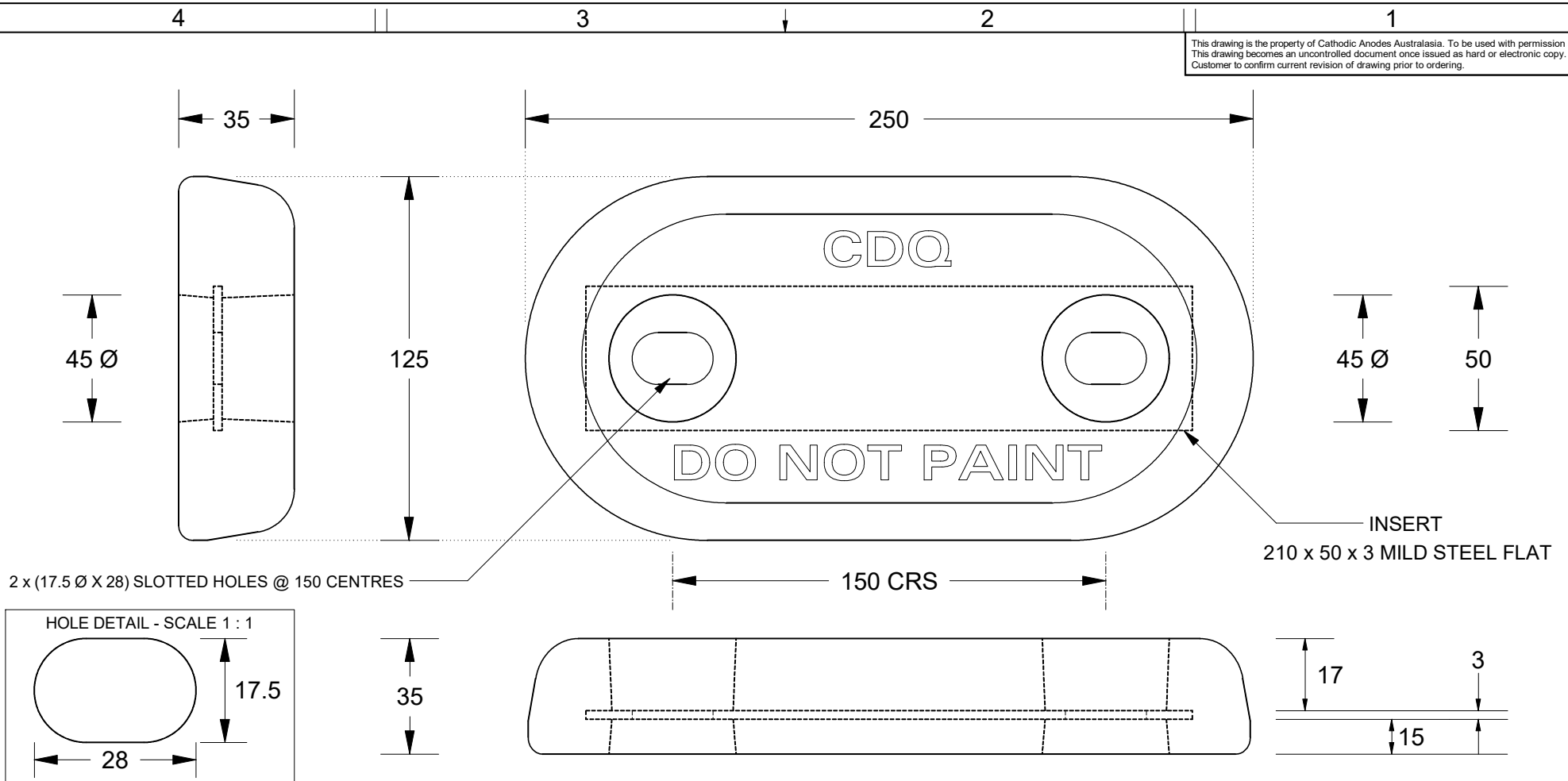
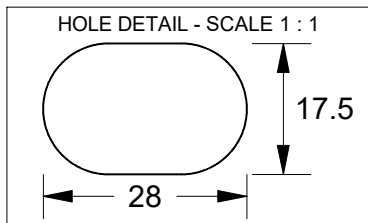


This drawing is the property of Cathodic Anodes Australasia. To be used with permission only. This drawing becomes an uncontrolled document once issued as hard or electronic copy. Customer to confirm current revision of drawing prior to ordering.



2 x (17.5 Ø X 28) SLOTTED HOLES @ 150 CENTRES

INSERT
210 x 50 x 3 MILD STEEL FLAT



CDQ
CAST INDENTATION LETTERING

All dimensions are in mm (nominal)

Chemical Composition Limits			Alloy: A1
Standard: AS2239 (Most current revision)			
Element	min.	max.	
Zinc	2.1	2.7	
Indium	0.017	0.025	
Cadmium	0.008	0.012	
Silicon	-	0.20	
Iron	-	0.12	
Copper	-	0.006	
Other Impurities			
- each	-	0.02	
- total	-	0.05	
Aluminium	remainder		

- Notes
1. Anodes are cast to comply with CAA's standard casting tolerances
 2. All sharp edges removed for safe handling
 3. Anode insert material to meet relevant Australian/International specifications



Rev	Details of Change(s)	Nett Weight		Gross Weight	
		Kg (nominal)		Kg (nominal)	
		2.30	2.50		
		Date	Drawn	Verified	
1	Cathodic Diecasting Original	08 August 2010	B.L.	R.G.	
2	2013 Catalogue Version (CAA Logo)	10 January 2014	R.N.	R.G.	

CAA
Cathodic Anodes Australasia
cathodicanodes.com.au

Product			
Aluminium Anode			
Part no.	CDA-2.50H Type 1 (A1)		Scale 1 : 2
Drawing No:	CD3142		Rev 2
Drawn by: R Northey		Date: 10 JAN 2014	Sheet 1 of 1
Mould No: 86	Strap Sample: 13		