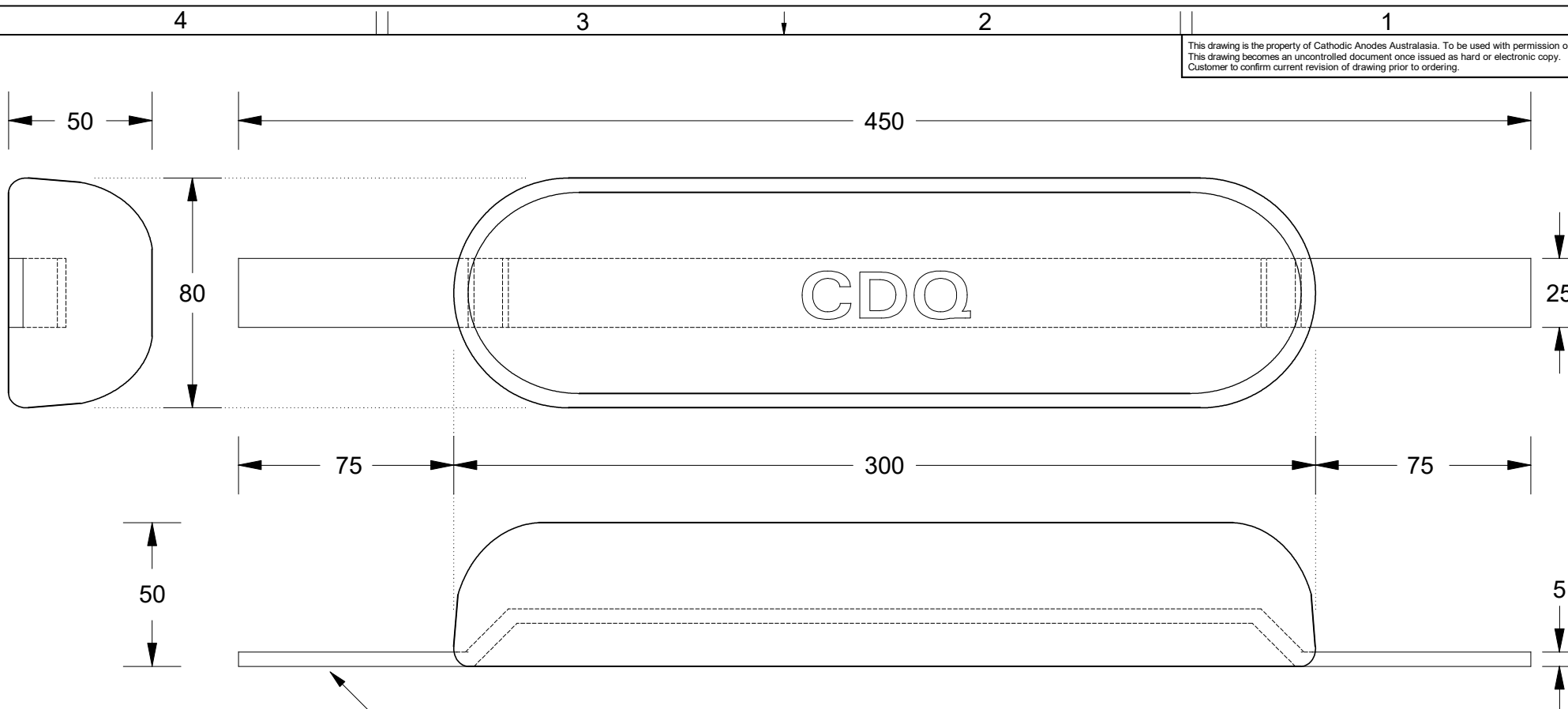


This drawing is the property of Cathodic Anodes Australasia. To be used with permission only. This drawing becomes an uncontrolled document once issued as hard or electronic copy. Customer to confirm current revision of drawing prior to ordering.



CDQ

CDQ
CAST INDENTATION LETTERING

INSERT - 25 x 5 MILD STEEL FLAT BAR

Alloy Compositions Standard: AS2239 Aluminium (Most current revision)	Alloy: A1		Alloy: A6	
	Min	Max	Min	Max
Zinc	2.1	2.7	2.0	6.0
Indium	0.017	0.025	0.01	0.02
Cadmium	0.008	0.012	—	0.005
Silicon	—	0.20	0.08	0.12
Iron	—	0.12	—	0.12
Magnesium	—	0.02	—	0.02
Titanium	—	0.02	—	0.02
Copper	—	0.006	—	0.006
Tin	—	0.02	—	0.02
Other Impurities	- Each	0.02	- Each	0.02
Aluminium	- Total	0.05 remainder	- Total	0.05 remainder


- Notes
- Anodes are cast to comply with CAA's standard casting tolerances
 - All sharp edges removed for safe handling
 - Anode insert material to meet relevant Australian/International specifications



All dimensions are in mm (nominal)

Rev	Details of Change(s)	Date	Drawn	Verified
1	For Manufacture	13 OCT 10	B.L.	R.G.
2	Type 1 Designation	23 AUG 11	R.N.	L.S.
3	CAA Logo Revision	23 FEB 17	R.N.	J.L.


Cathodic Anodes Australasia
cathodicanodes.com.au

Product Aluminium Anode	
Part no. CDA-3.2S Type 1 (A1/A6)	Scale 1 : 2
Drawing No: CD3132	Rev 3 Sheet 1 of 1
Drawn by: R Northey Date: 23 FEB 2017	
Mould No: 91 Strap Sample 35	

D

C

B

A

4

3

2

1

4

3

2

1