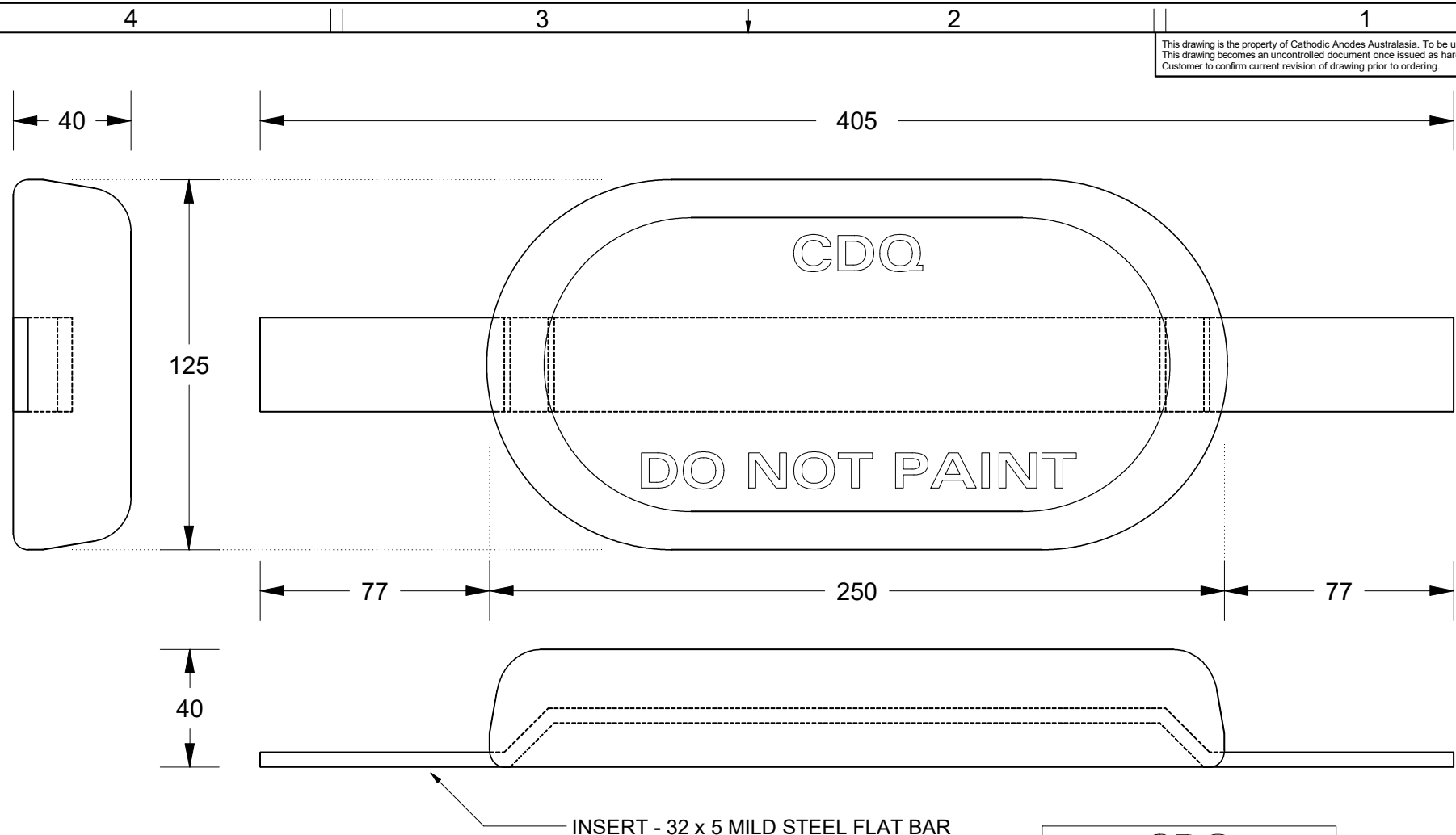


This drawing is the property of Cathodic Anodes Australasia. To be used with permission only.
 This drawing becomes an uncontrolled document once issued as hard or electronic copy.
 Customer to confirm current revision of drawing prior to ordering.



INSERT - 32 x 5 MILD STEEL FLAT BAR

CDQ
 CAST INDENTATION LETTERING

All dimensions are in mm (nominal)

Chemical Composition Limits			Alloy:
Standard: AS2239 (Most current revision)			A1
Aluminium			
Element	min.	max.	
Zinc	2.1	2.7	
Indium	0.017	0.025	
Cadmium	0.008	0.012	
Silicon	-	0.20	
Iron	-	0.12	
Copper	-	0.006	
Other Impurities			
- each	-	0.02	
- total	-	0.05	
Aluminium	remainder		

- Notes
- Anodes are cast to comply with CAA's standard casting tolerances
 - All sharp edges removed for safe handling
 - Anode insert material to meet relevant Australian/International specifications



Rev	Details of Change(s)	Nett Weight		Gross Weight	
		Date	Drawn	Verified	
			2.60	3.10	
1	Cathodic Diecasting Original	31 October 2008	<i>B.L.</i>	<i>R.G.</i>	
2	2013 Catalogue Version (CAA Logo)	10 January 2014	<i>R.N.</i>	<i>R.G.</i>	
3	Weights & Deminsions Revised	25 August 2017	<i>R.N.</i>	<i>J.L.</i>	



Product		Aluminium Anode	
Part no.	CDA-2.7S (A1)	Scale	1 : 2
Drawing No:	CD3131	Rev	3
Drawn by: R Northey	Date: 25 AUG 2017	Sheet	1 of 1
Mould No: 88	Strap Sample: 02		