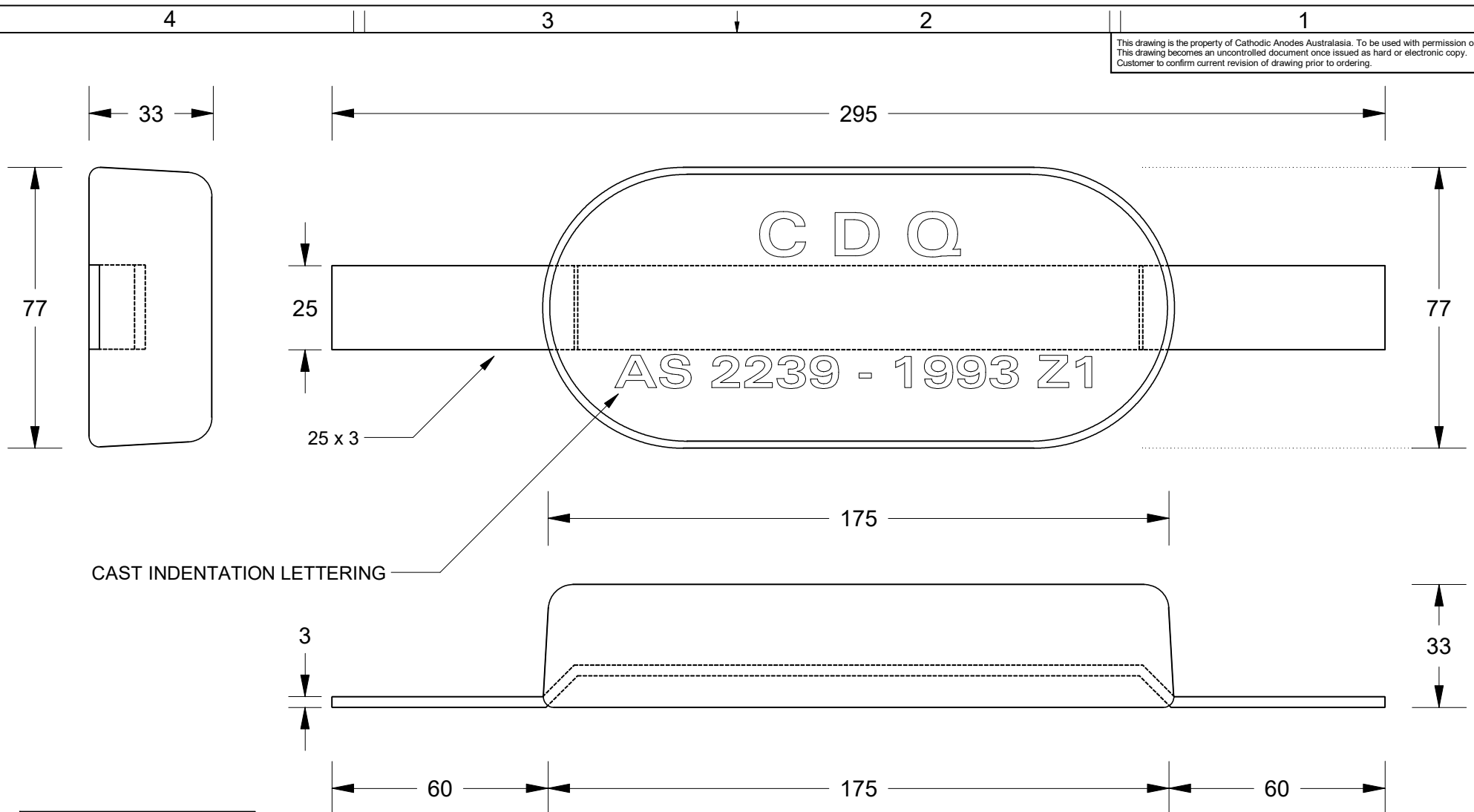


This drawing is the property of Cathodic Anodes Australasia. To be used with permission only. This drawing becomes an uncontrolled document once issued as hard or electronic copy. Customer to confirm current revision of drawing prior to ordering.



CAST INDENTATION LETTERING

All dimensions are in mm (nominal)

Chemical Composition Limits			Alloy: A1
Standard: AS2239 (Most current revision)			
Aluminium			
Element	min.	max.	
Zinc	2.1	2.7	
Indium	0.017	0.025	
Cadmium	0.008	0.012	
Silicon	-	0.20	
Iron	-	0.12	
Copper	-	0.006	
Other Impurities			
- each	-	0.02	
- total	-	0.05	
Aluminium	remainder		

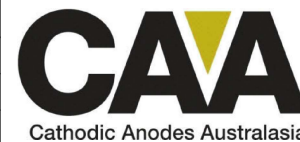
Notes

1. Anodes are cast to comply with CAA's standard casting tolerances
2. All sharp edges removed for safe handling
3. Anode insert material to meet relevant Australian/International specifications



Rev	Details of Change(s)	Date	Drawn	Verified
1	For Manufacture	12 JAN 10	B.L.	R.G.
2	2013 Catalogue Version (CAA Logo)	29 OCT 19	R.N.	L.S.

Nett Weight Kg (nominal)	Gross Weight Kg (nominal)
1.10	1.25



cathodicanodes.com.au

Product	
Aluminium Anode	
Part no.	Scale
CDA-1S Type 2 (A1)	1 : 1.5
Drawing No: CD3127	Rev Sheet
	2 1 of 1
Drawn by: R Northey	Date: 29 OCT 2019
Mould No: 63	Strap Sample: NA

