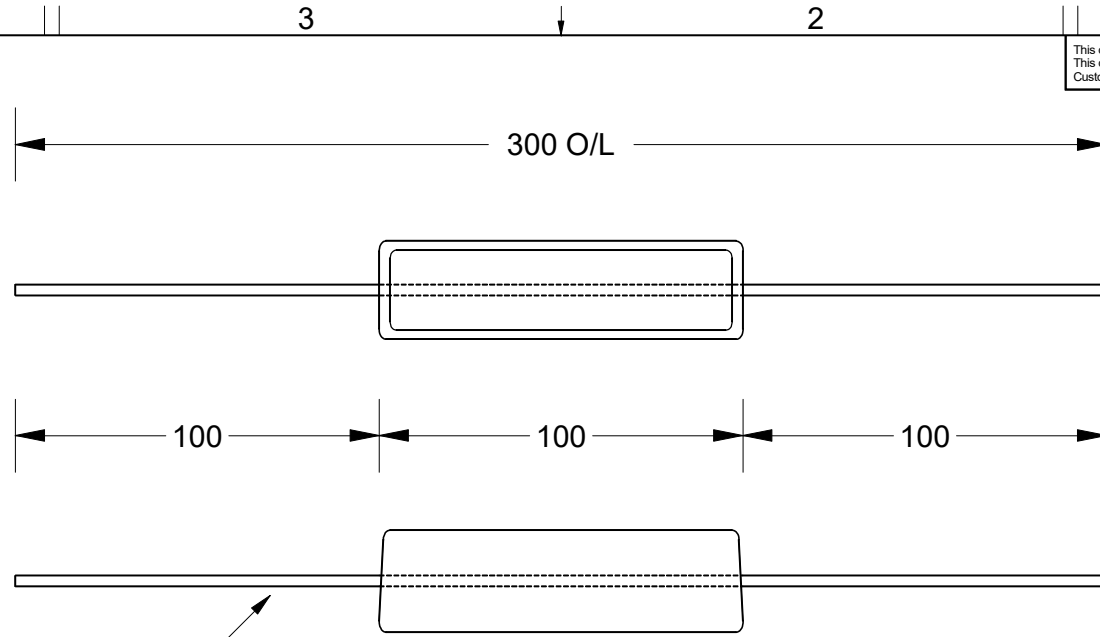
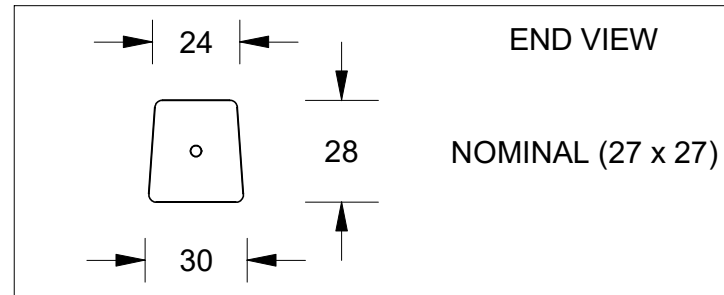


This drawing is the property of Cathodic Anodes Australasia. To be used with permission only. This drawing becomes an uncontrolled document once issued as hard or electronic copy. Customer to confirm current revision of drawing prior to ordering.



2.5mm Ø "Soft Gal" (Annealed) Steel Wire



Chemical Composition Limits			Alloy: <b>A1</b>
Element	min.	max.	
Standard: AS2239 (Most current revision)			
Aluminium			
Zinc	2.1	2.7	
Indium	0.017	0.025	
Cadmium	0.008	0.012	
Silicon	-	0.20	
Iron	-	0.12	
Copper	-	0.006	
Other Impurities			
- each	-	0.02	
- total	-	0.05	
Aluminium	remainder		

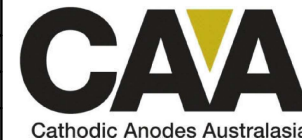
Notes

1. Anodes are cast to comply with CAA's standard casting tolerances
2. All sharp edges removed for safe handling
3. Anode insert material to meet relevant Australian/International specifications



Rev		Details of Change(s)		Date	Drawn	Verified
1		Cathodic Diecasting Original		05 August 2009	B.L.	R.G.
2		2013 Catalogue Version (CAA Logo)		10 January 2014	R.N.	R.G.
3		2.5mm Ø "Soft Gal" (Annealed) Steel Wire		27 January 2016	R.N.	J.L.

Nett Weight	Gross Weight
Kg (nominal)	Kg (nominal)
<b>0.190</b>	<b>N/A</b>



cathodicanodes.com.au

Product			
<b>Aluminium Anode</b>			
Part no.		Scale	
<b>CDA-00 (A1)</b>		<b>1 : 2</b>	
Drawing No: <b>CD3125</b>		Rev	Sheet
		<b>3</b>	<b>1 of 1</b>
Drawn by: R Northey		Date: 27 JAN 2016	

All dimensions are in mm (nominal)