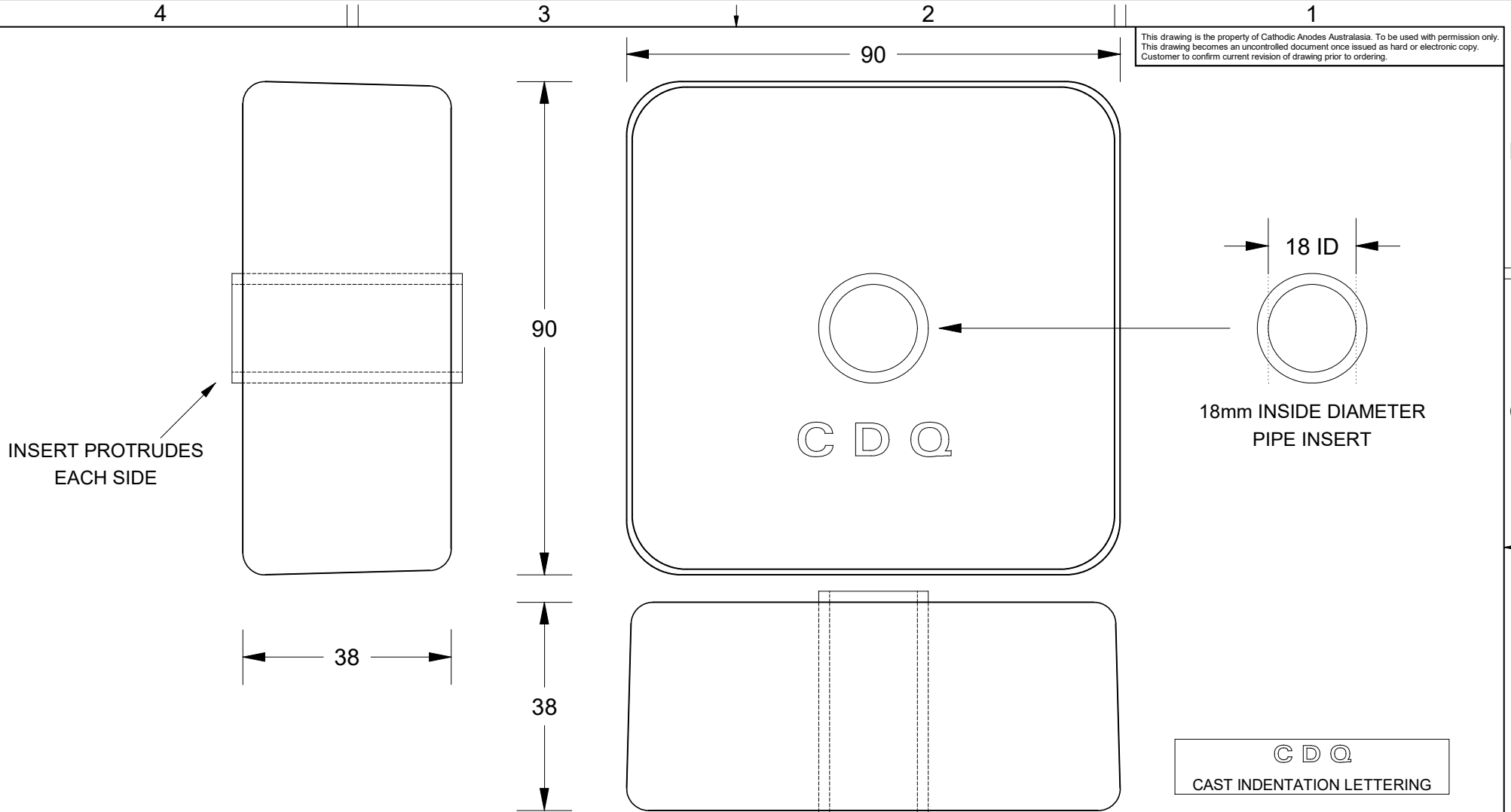


This drawing is the property of Cathodic Anodes Australasia. To be used with permission only.  
 This drawing becomes an uncontrolled document once issued as hard or electronic copy.  
 Customer to confirm current revision of drawing prior to ordering.




Chemical Composition Limits			Alloy: <b>A1</b>
Element	min.	max.	
Standard: AS2239 (Most current revision)			
Aluminium			
Zinc	2.1	2.7	
Indium	0.017	0.025	
Cadmium	0.008	0.012	
Silicon	-	0.20	
Iron	-	0.12	
Copper	-	0.006	
Other Impurities			
- each	-	0.02	
- total	-	0.05	
Aluminium		remainder	

- Notes
1. Anodes are cast to comply with CAA's standard casting tolerances
  2. All sharp edges removed for safe handling
  3. Anode insert material to meet relevant Australian/International specifications



Rev	Details of Change(s)	Date	Drawn	Verified
1	Cathodic Diecasting Original	03 June 2009	B.L.	R.G.
2	2013 Catalogue Version (CAA Logo)	10 January 2014	R.N.	R.G.
3	Insert ID 17, 17.5 > 18	07 AUG 17	R.N.	R.G.

  
**Cathodic Anodes Australasia**  
[cathodicanodes.com.au](http://cathodicanodes.com.au)

Product		<b>Aluminium Anode</b>	
Part no.	<b>CDA-Type C (A1)</b>	Scale	<b>1 : 1</b>
Drawing No:	<b>CD3124</b>	Rev	<b>3</b>
Drawn by: R Northey	Date: 07 AUG 2017	Sheet	<b>1 of 1</b>
Mould No: 82			

All dimensions are in mm (nominal)