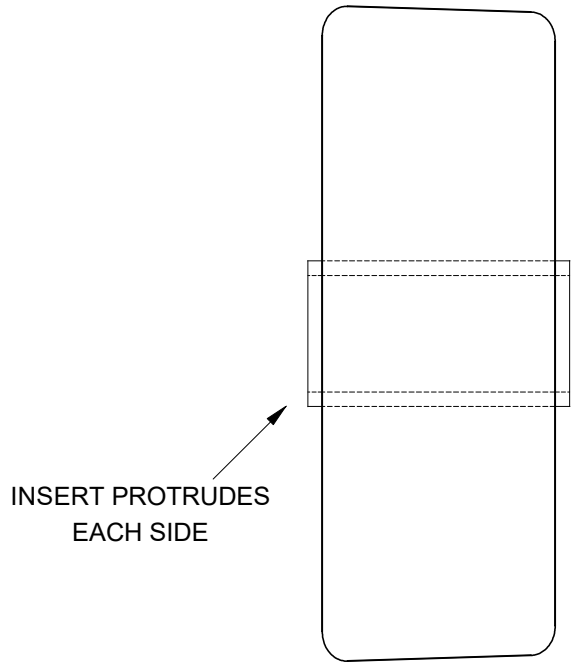
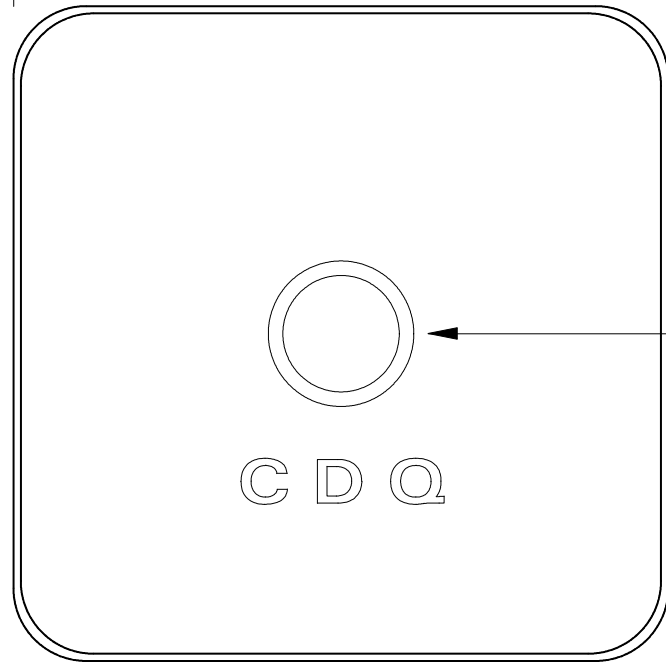
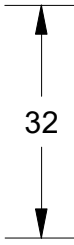
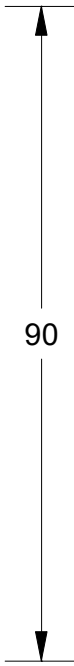
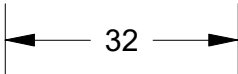


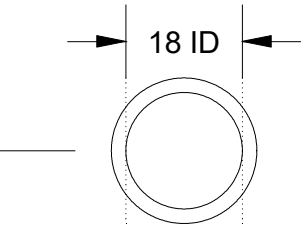
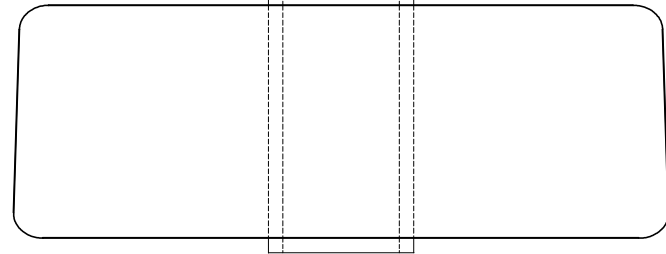
This drawing is the property of Cathodic Anodes Australasia. To be used with permission only.
 This drawing becomes an uncontrolled document once issued as hard or electronic copy.
 Customer to confirm current revision of drawing prior to ordering.



INSERT PROTRUDES
EACH SIDE



C D Q



18mm INSIDE DIAMETER
PIPE INSERT

C D Q
CAST INDENTATION LETTERING

All dimensions are in mm (nominal)

Chemical Composition Limits			Alloy: A1
Element	min.	max.	
Standard: AS2239 (Most current revision)			
Aluminium			
Zinc	2.1	2.7	
Indium	0.017	0.025	
Cadmium	0.008	0.012	
Silicon	-	0.20	
Iron	-	0.12	
Copper	-	0.006	
Other Impurities			
- each	-	0.02	
- total	-	0.05	
Aluminium	remainder		

- Notes
1. Anodes are cast to comply with CAA's standard casting tolerances
 2. All sharp edges removed for safe handling
 3. Anode insert material to meet relevant Australian/International specifications



Rev	Details of Change(s)	Date	Drawn	Verified
1	Cathodic Diecasting Original	19 May 2009	B.L.	R.G.
2	2013 Catalogue Version (CAA Logo)	10 January 2014	R.N.	R.G.
3	Insert ID 17, 17.5 > 18	07 AUG 17	R.N.	R.G.

Nett Weight Kg (nominal)	Gross Weight Kg (nominal)
0.500	N/A

CAA
Cathodic Anodes Australasia

cathodicanodes.com.au

Product Aluminium Anode	
Part no. CDA-Type B (A1)	Scale 1 : 1
Drawing No: CD3123	Rev 3 Sheet 1 of 1
Drawn by: R Northey Date: 07 AUG 2017	
Mould No: 82	