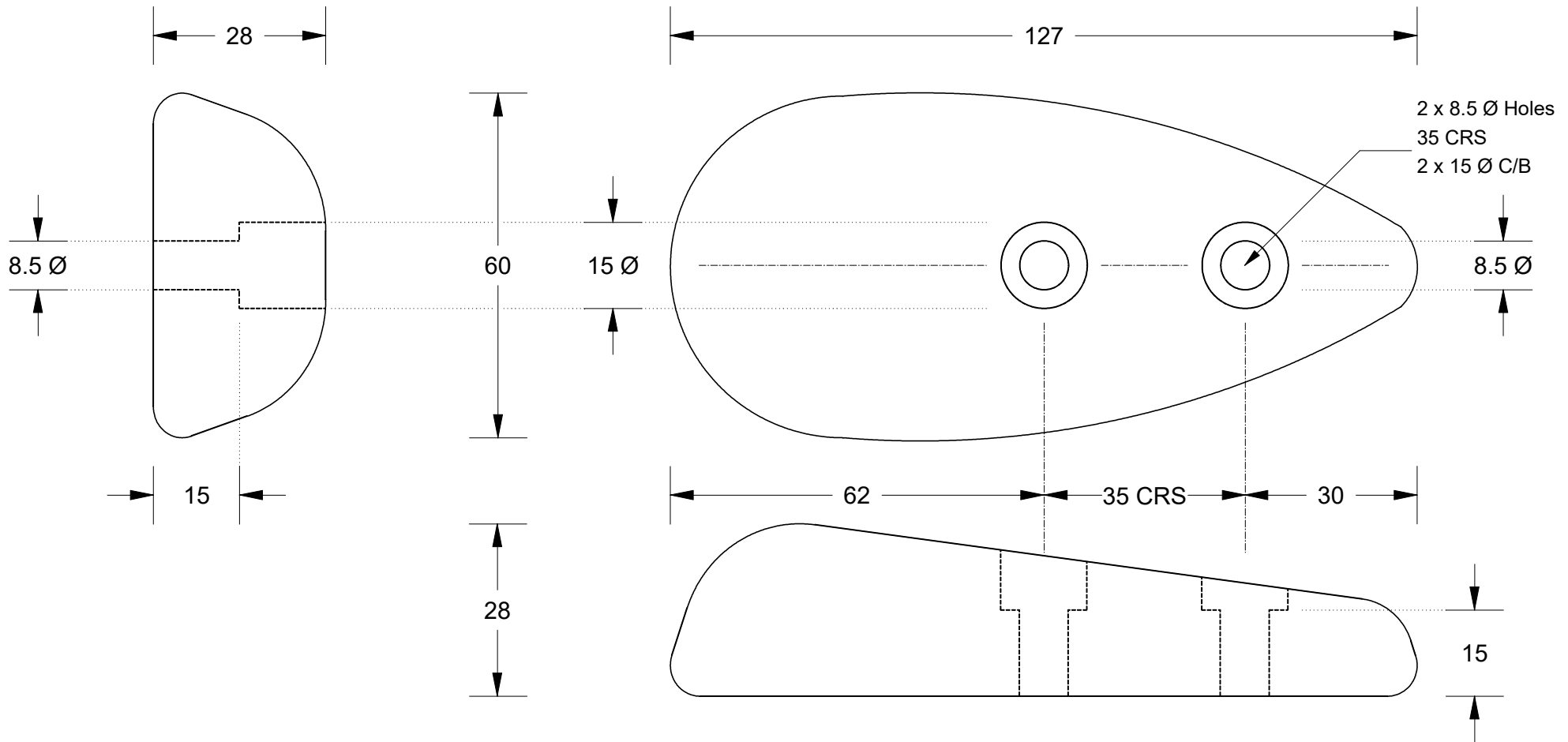


This drawing is the property of Cathodic Anodes Australasia. To be used with permission only.
 This drawing becomes an uncontrolled document once issued as hard or electronic copy.
 Customer to confirm current revision of drawing prior to ordering.



All dimensions are in mm (nominal)

Chemical Composition Limits		Alloy:	
Standard: AS2239 (Most current revision)		A1	
Aluminium			
Element	min.	max.	
Zinc	2.1	2.7	
Indium	0.017	0.025	
Cadmium	0.008	0.012	
Silicon	-	0.20	
Iron	-	0.12	
Copper	-	0.006	
Other Impurities			
- each	-	0.02	
- total	-	0.05	
Aluminium	remainder		

Notes

- Anodes are cast to comply with CAA's standard casting tolerances
- All sharp edges removed for safe handling
- Anode insert material to meet relevant Australian/International specifications



Rev	Details of Change(s)	Date	Drawn	Verified
1	For Manufacture	08 August 2011	R.N.	R.G.
2	Holes > 8 to 8.5 mm Ø	16 August 2011	R.N.	R.G.
2	3rd Angle added, CAA Logo	28 April 2014	R.N.	R.G.

Nett Weight Kg (nominal)	Gross Weight Kg (nominal)
0.35	N/A



Cathodic Anodes Australasia

cathodicanodes.com.au

Product		Aluminium Anode	
Part no.	CDA3-5H Type 2	Scale	1 : 1
Drawing No:	CD3090	Rev	3
Drawn by: R Northey	Date: 28 APR 2014	Sheet	1 of 1
Mould No: 70			