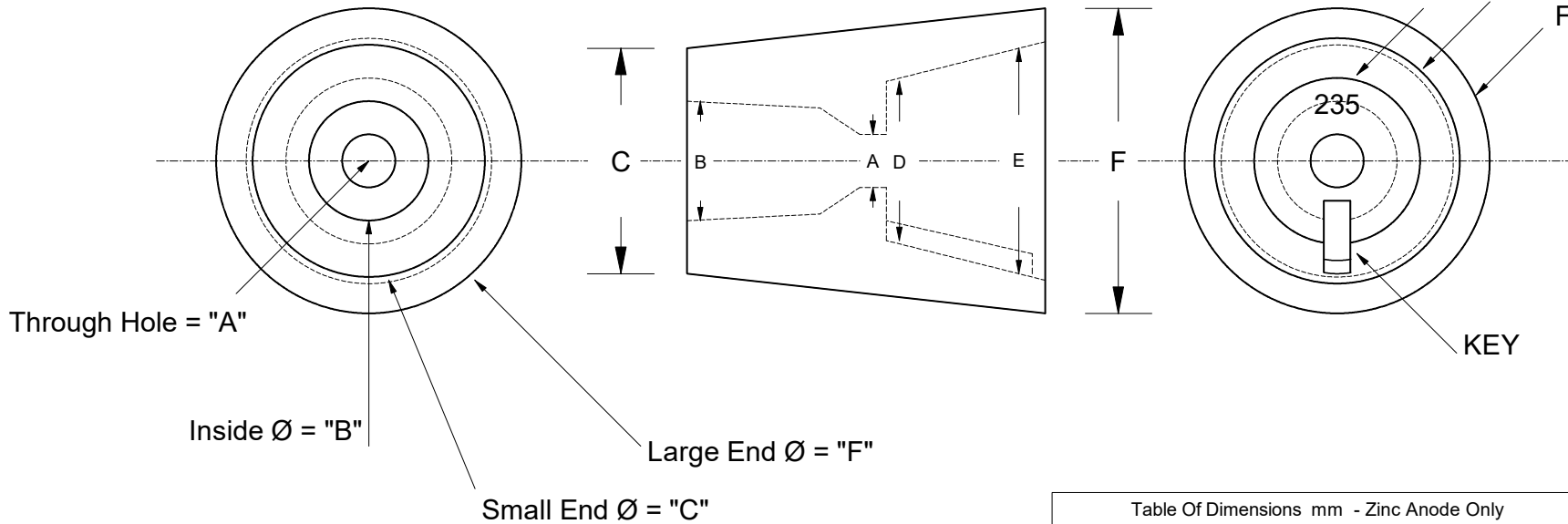


This drawing is the property of Cathodic Anodes Australasia. To be used with permission only.
 This drawing becomes an uncontrolled document once issued as hard or electronic copy.
 Customer to confirm current revision of drawing prior to ordering.

Mounting Side

Side View

Underside (Big End)



BENETEAU - ZINC CONE ANODE

Through Hole "A"	10	Inside Ø = "E"	37
Inside Ø = "B"	18	Large End Ø = "F"	48
Small End Ø = "C"	46	Overall Length = "G"	74
Base Ø = "D"	28	Marking	235

Chemical Composition Limits			Alloy:
Standard: AS2239* (Most current revision)			Z1
Element	min.	max.	
Zinc			
Cadmium	0.025	0.07	
Aluminium	0.10	0.50	
Silicon	-	0.005	
Copper	-	0.005	
Iron	-	0.005	
Lead	-	0.006	
Other Impurities			
- each	-	0.005	
- total	-	0.02	
Zinc		remainder	

* Corresponds to MIL-DTL-18001L alloy composition

Notes

1. Anodes are cast to comply with CAA's standard casting tolerances
2. All sharp edges removed for safe handling
3. Anode insert material to meet relevant Australian/International specifications

All dimensions are in mm (nominal)

Rev	Details of Change(s)	Date	Drawn	Verified
1	Cathodic Diecasting Original	05 August 2011	R.N.	R.G.
2	2013 Catalogue Version (CAA Logo)	21 December 2016	R.N.	R.G.

Nett Weight Kg (nominal)	Gross Weight Kg (nominal)
0.710	N/A



Cathodic Anodes Australasia

cathodicanodes.com.au

Product Zinc Anode		Scale 1 : 1	
Part no. CDZPN - 245		Rev 2	Sheet 1 of 1
Drawing No: CD3086		Drawn by: R Northey Date: 21 DEC 2016	
Mould No: N/A		Tooling: N/A	

