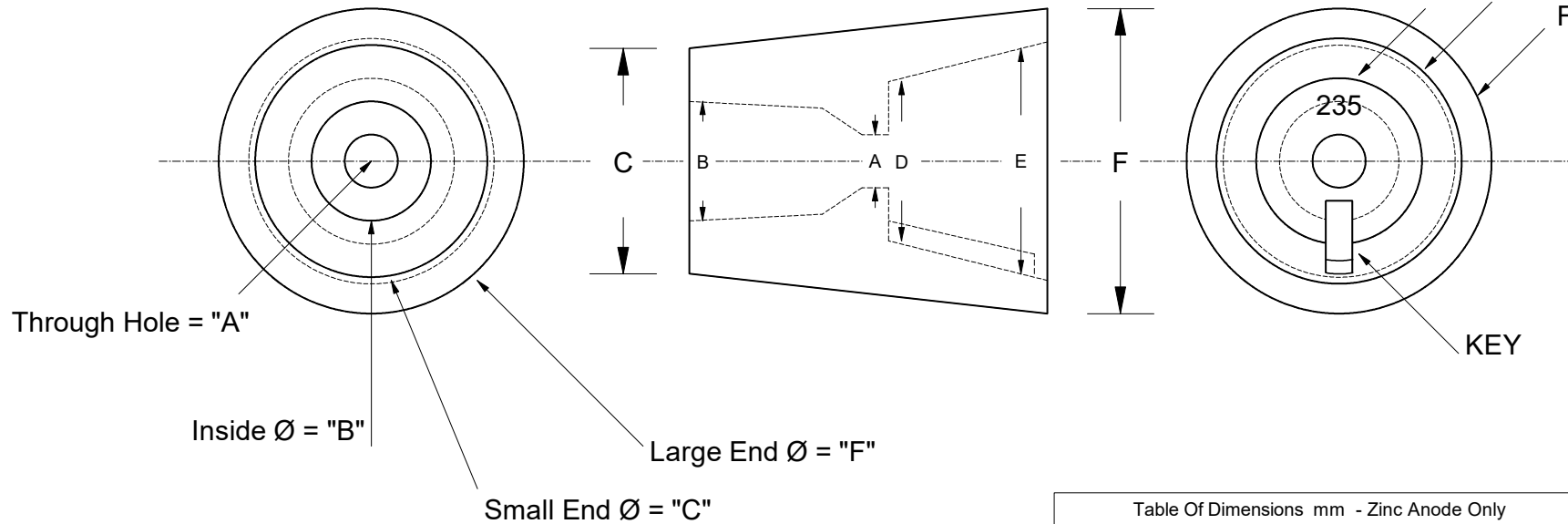


This drawing is the property of Cathodic Anodes Australasia. To be used with permission only.
 This drawing becomes an uncontrolled document once issued as hard or electronic copy.
 Customer to confirm current revision of drawing prior to ordering.

Mounting Side

Side View

Underside (Big End)



| Table Of Dimensions mm - Zinc Anode Only | | | |
|------------------------------------------|----|----------------------|-----|
| Through Hole "A" | 8 | Inside Ø = "E" | 37 |
| Inside Ø = "B" | 18 | Large End Ø = "F" | 46 |
| Small End Ø = "C" | 35 | Overall Length = "G" | 58 |
| Base Ø = "D" | 25 | Marking | 235 |

BENETEAU - ZINC CONE ANODE

| Chemical Composition Limits | | | Alloy: |
|-------------------------------------------|-----------|-------|-----------|
| Standard: AS2239* (Most current revision) | | | Z1 |
| Zinc | | | |
| Element | min. | max. | |
| Cadmium | 0.025 | 0.07 | |
| Aluminium | 0.10 | 0.50 | |
| Silicon | - | 0.005 | |
| Copper | - | 0.005 | |
| Iron | - | 0.005 | |
| Lead | - | 0.006 | |
| Other Impurities | | | |
| - each | - | 0.005 | |
| - total | - | 0.02 | |
| Zinc | remainder | | |

Notes

1. Anodes are cast to comply with CAA's standard casting tolerances
2. All sharp edges removed for safe handling
3. Anode insert material to meet relevant Australian/International specifications

All dimensions are in mm (nominal)

| Rev | Details of Change(s) | Date | Drawn | Verified |
|-----|-----------------------------------|------------------|-------|----------|
| 1 | Cathodic Diecasting Original | 05 August 2011 | R.N. | R.G. |
| 2 | 2013 Catalogue Version (CAA Logo) | 21 December 2016 | R.N. | R.G. |

| Nett Weight Kg (nominal) | Gross Weight Kg (nominal) |
|-----------------------------|------------------------------|
| 0.325 | N/A |



cathodicanodes.com.au

| | | | |
|--------------------------------|--|-----------------------|------------------------|
| Product Zinc Anode | | Scale 1 : 1 | |
| Part no. CDZPN - 235 | | Rev 2 | Sheet 1 of 1 |
| Drawing No: CD3085 | | Date: 21 DEC 2016 | |
| Drawn by: R Northey | | Tooling: N/A | |
| Mould No: N/A | | | |

* Corresponds to MIL-DTL-18001L alloy composition