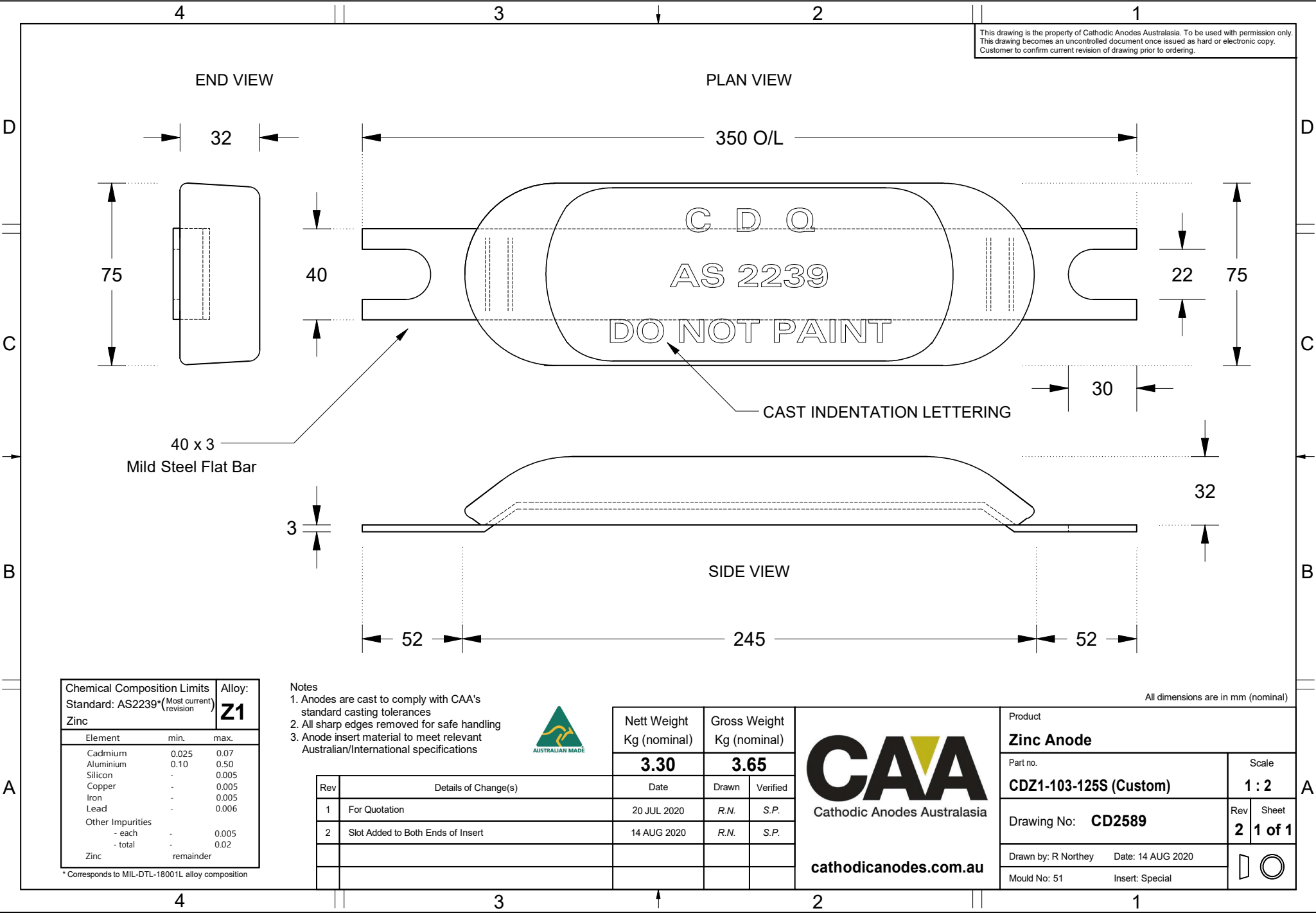


This drawing is the property of Cathodic Anodes Australasia. To be used with permission only.
 This drawing becomes an uncontrolled document once issued as hard or electronic copy.
 Customer to confirm current revision of drawing prior to ordering.



Chemical Composition Limits			Alloy: Z1
Element	min.	max.	
Standard: AS2239* (Most current revision)			
Zinc			
Cadmium	0.025	0.07	
Aluminium	0.10	0.50	
Silicon	-	0.005	
Copper	-	0.005	
Iron	-	0.005	
Lead	-	0.006	
Other Impurities			
- each	-	0.005	
- total	-	0.02	
Zinc		remainder	

- Notes
- Anodes are cast to comply with CAA's standard casting tolerances
 - All sharp edges removed for safe handling
 - Anode insert material to meet relevant Australian/International specifications



Rev	Details of Change(s)	Date	Nett Weight		Gross Weight	
			Kg (nominal)		Kg (nominal)	
			3.30		3.65	
1	For Quotation	20 JUL 2020	R.N.	S.P.		
2	Slot Added to Both Ends of Insert	14 AUG 2020	R.N.	S.P.		



cathodicanodes.com.au

Product Zinc Anode			
Part no. CDZ1-103-125S (Custom)		Scale 1 : 2	
Drawing No: CD2589		Rev 2	Sheet 1 of 1
Drawn by: R Northey Date: 14 AUG 2020			
Mould No: 51	Insert: Special		

All dimensions are in mm (nominal)

* Corresponds to MIL-DTL-18001L alloy composition