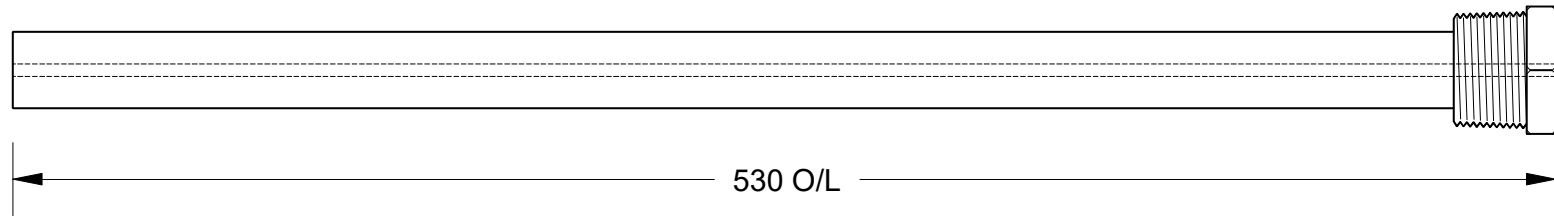


This drawing is the property of Cathodic Anodes Australasia. To be used with permission only.
 This drawing becomes an uncontrolled document once issued as hard or electronic copy.
 Customer to confirm current revision of drawing prior to ordering.

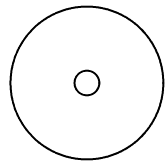
Component View - Scale 1 : 2.5



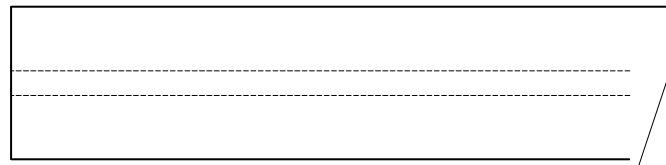
530 O/L

3.4 Ø Mild Steel (Wire) Core - Welded at Cap End

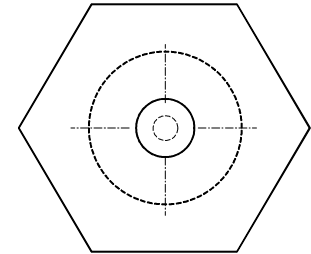
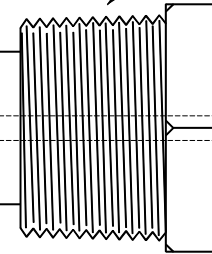
1" NPT (Mild Steel) Cap



21 Ø



21 mm Ø Low Potential (AS2239-M2) Magnesium Rod



35 Hex

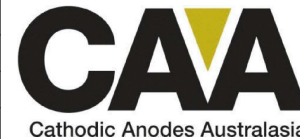
Chemical Composition Limits		Alloy:	
Standard: AS2239 (Most current revision)		M2	
Magnesium. Low Potential			
Element	min.	max.	
Aluminium	2.5	3.5	
Zinc	0.7	1.3	
Manganese	0.20	1.5	
Silicon	-	0.05	
Copper	-	0.006	
Iron	-	0.003	
Nickel	-	0.001	
Calcium	-	0.04	
Other Impurities	-	-	
- each	-	-	
- total	-	0.30	
Magnesium	remainder		

Notes

1. Anodes are cast to comply with CAA's standard casting tolerances
2. All sharp edges removed for safe handling
3. Anode insert material to meet relevant Australian/International specifications

Nett Weight		Gross Weight	
Kg (nominal)		Kg (nominal)	
0.350		0.400	

Rev	Details of Change(s)	Drawn	Initials	Verified	Initials
1	For Quotation	8 FEB 20	R.N.	8 FEB 20	L.S.



cathodicanodes.com.au

Product		Magnesium Anode	
Part no.		CDMR-M2-21-0530-A (1" NPT)	
Scale		N T S	
Drawing No:		CD2543	
Rev	Sheet		
1	1 of 1		
Drawn by: R Northey		Date: 8 FEB 20	
All dimensions are in mm (nominal)			

