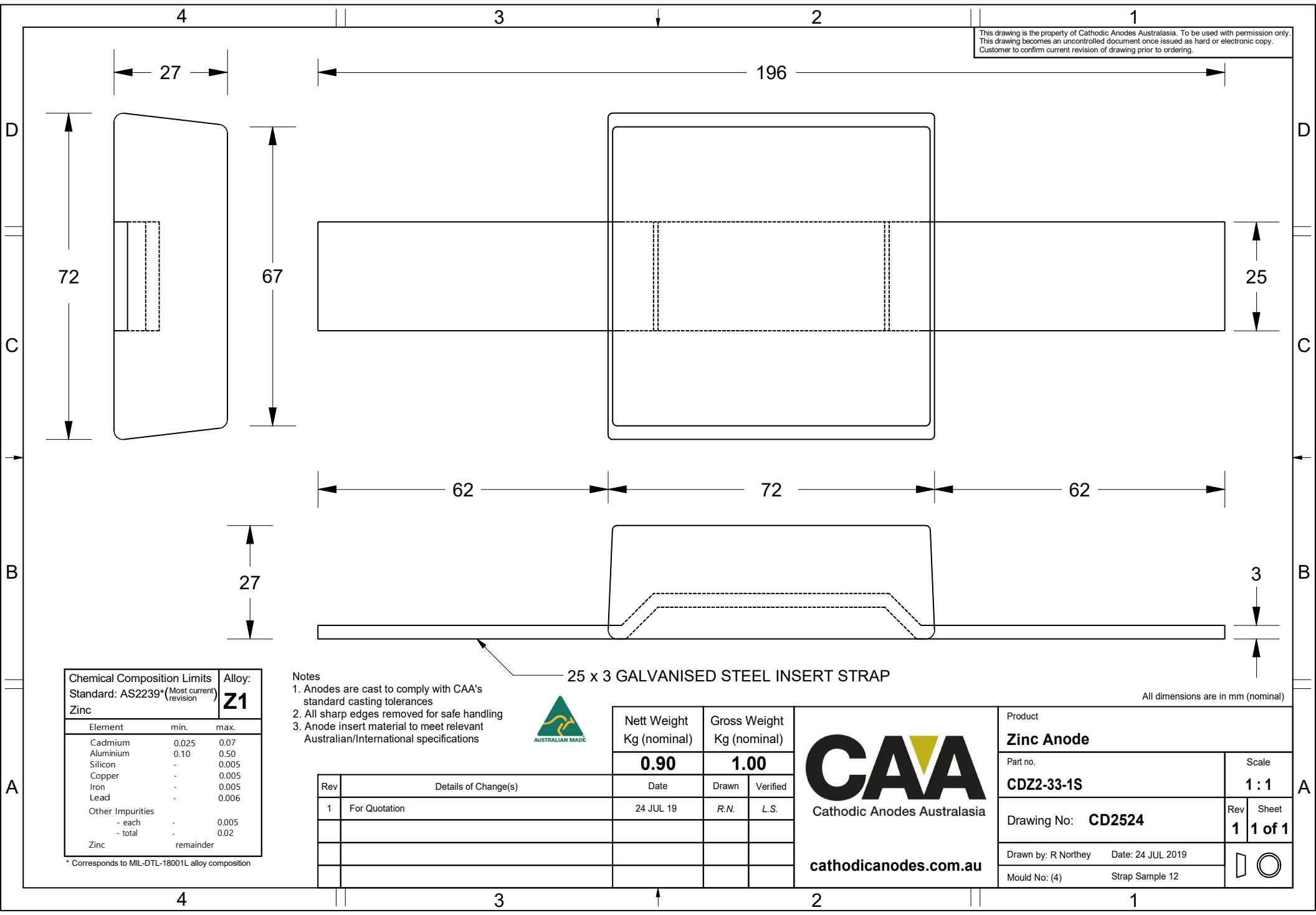


This drawing is the property of Cathodic Anodes Australasia. To be used with permission only.
 This drawing becomes an uncontrolled document once issued as hard or electronic copy.
 Customer to confirm current revision of drawing prior to ordering.



Chemical Composition Limits		Alloy:
Standard: AS2239* (Most current revision)		Z1
Element	min.	max.
Cadmium	0.025	0.07
Aluminium	0.10	0.50
Silicon	-	0.005
Copper	-	0.005
Iron	-	0.005
Lead	-	0.006
Other Impurities		
- each	-	0.005
- total	-	0.02
Zinc		remainder

* Corresponds to MIL-DTL-18001L alloy composition

- Notes
1. Anodes are cast to comply with CAA's standard casting tolerances
 2. All sharp edges removed for safe handling
 3. Anode insert material to meet relevant Australian/International specifications



25 x 3 GALVANISED STEEL INSERT STRAP

All dimensions are in mm (nominal)

Rev	Details of Change(s)	Date	Drawn	Verified
1	For Quotation	24 JUL 19	R.N.	L.S.

CAA
 Cathodic Anodes Australasia
 cathodicanodes.com.au

Product		Zinc Anode	
Part no.	CDZ2-33-1S	Scale	1 : 1
Drawing No:	CD2524	Rev	Sheet
		1	1 of 1
Drawn by: R Northey	Date: 24 JUL 2019		
Mould No: (4)	Strap Sample 12		