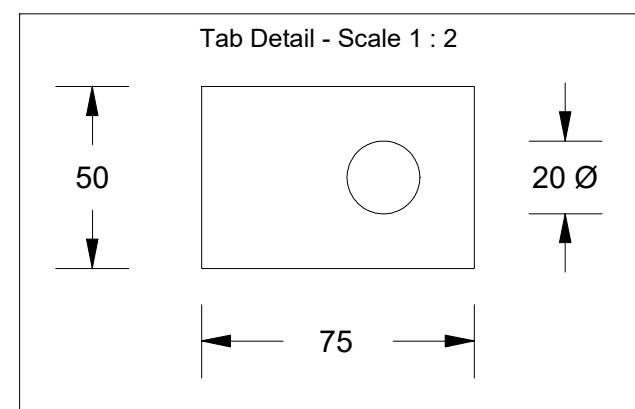
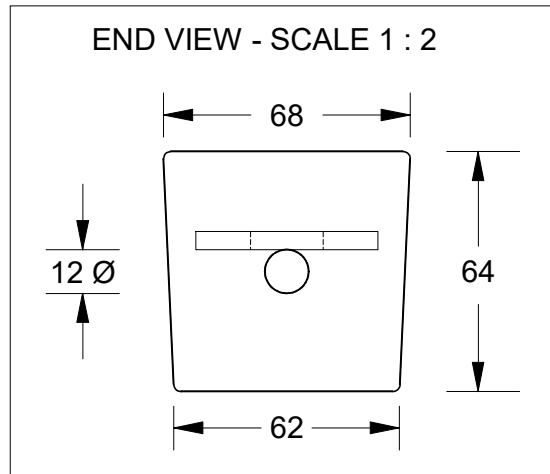
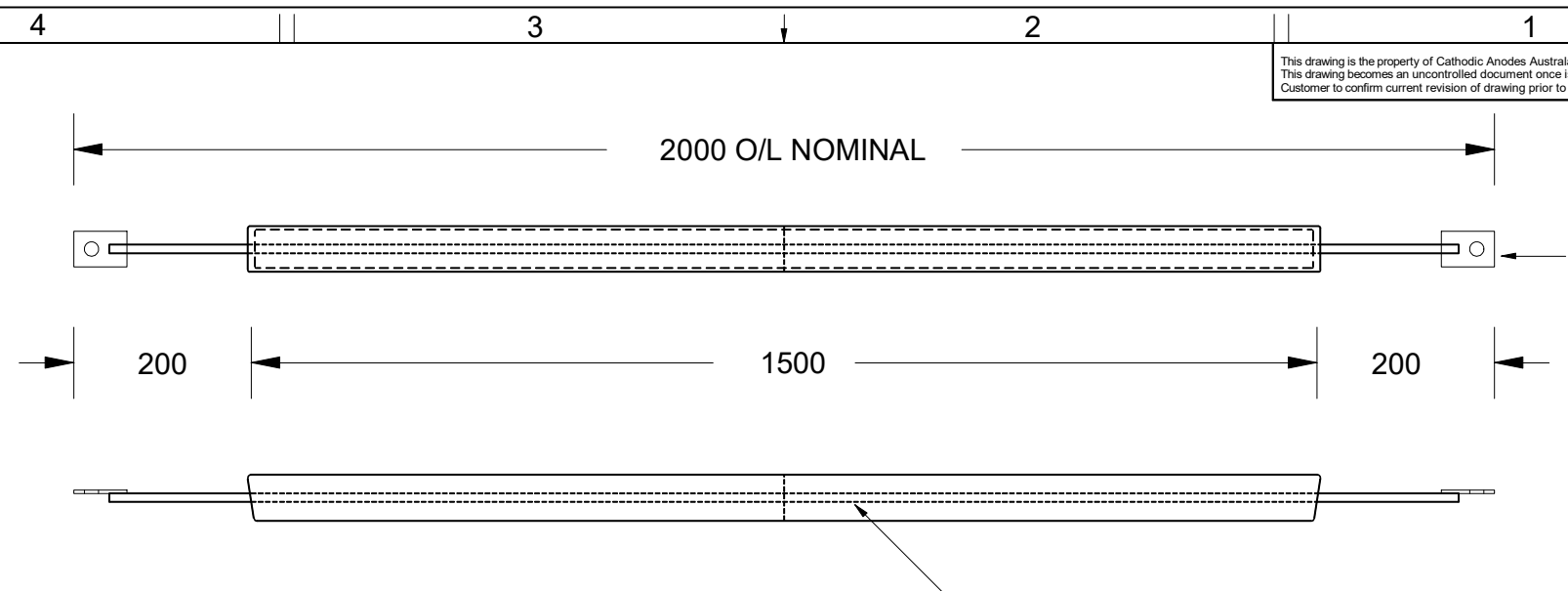


This drawing is the property of Cathodic Anodes Australasia. To be used with permission only. This drawing becomes an uncontrolled document once issued as hard or electronic copy. Customer to confirm current revision of drawing prior to ordering.



INSERT - 12mm Ø GALVANISED STEEL ROUND BAR

**HIGH POTENTIAL ALLOY**

Chemical Composition Limits		Alloy:
Standard: ASTM B843 (Most current revision)		<b>M1C</b>
Magnesium. High Potential		
Element	min.	max.
Aluminium	-	0.01
Zinc	-	0.02
Manganese	0.50	1.3*
Silicon	-	0.05
Copper	-	0.02
Iron	-	0.03
Nickel	-	0.001
Calcium	-	0.04
Other Impurities	-	-
- each	-	0.05
- total	-	0.30
Magnesium	remainder	-

**Notes**

1. Anodes are cast to comply with CAA's standard casting tolerances
2. All sharp edges removed for safe handling
3. Anode insert material to meet relevant Australian/International specifications

Rev	Details of Change(s)	Date	Initials	Verified	Initials
1	For Quotation	16 MAY 19	R.N.	16 MAY 19	S.P.

Nett Weight Kg (nominal)	Gross Weight Kg (nominal)
<b>11.0</b>	<b>12.5</b>

**CAA**  
Cathodic Anodes Australasia  
cathodicanodes.com.au

Product <b>Magnesium Anode</b>	
Part no. <b>CDM-11.0S (M1C) Halved</b>	Scale <b>1 : 10</b>
Drawing No: <b>CD2499</b>	Rev 1 Sheet 1 of 1
Drawn by: R Northey Date: 16 MAY 2019	
All dimensions are in mm (nominal)	