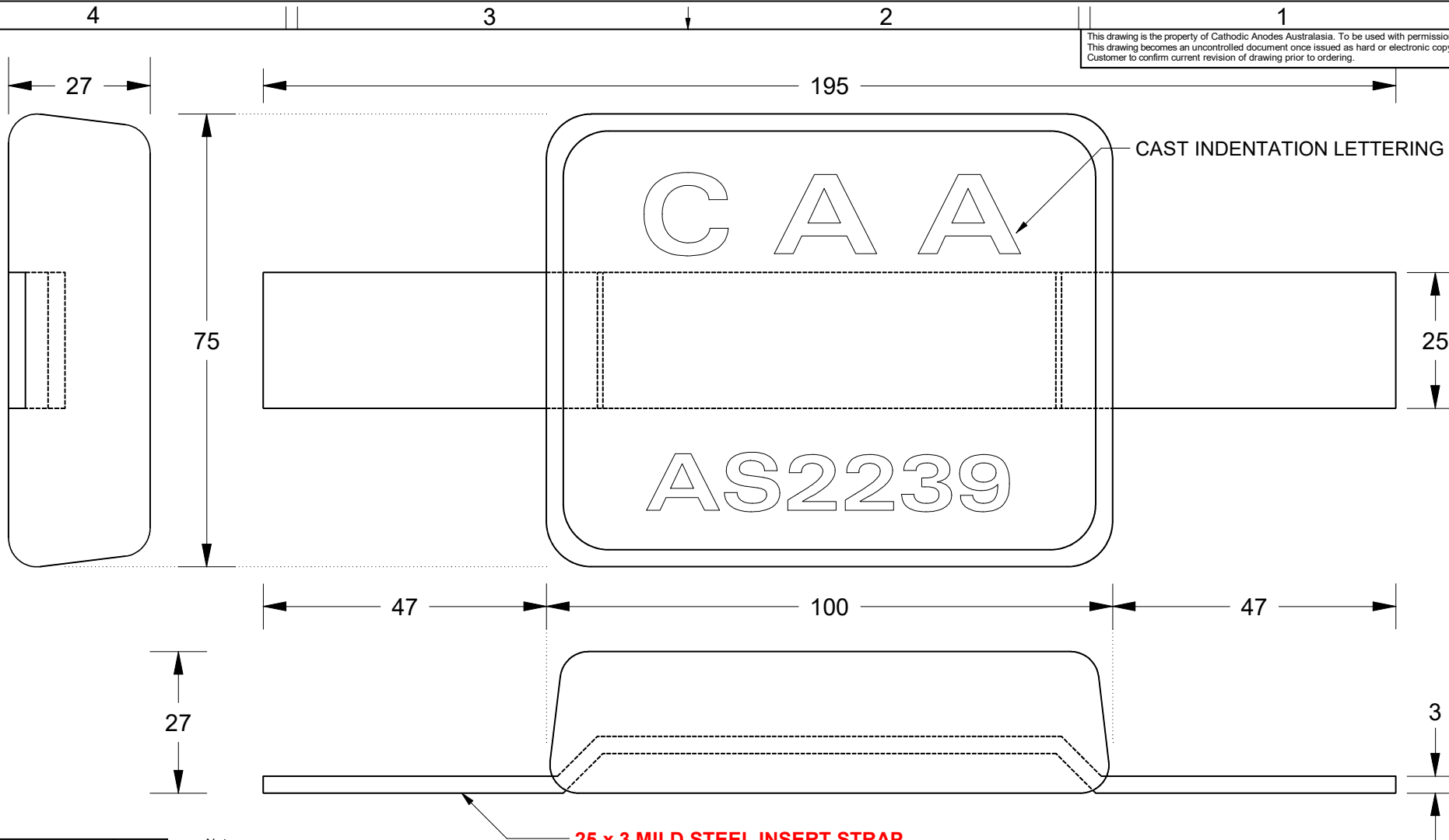


This drawing is the property of Cathodic Anodes Australasia. To be used with permission only.
 This drawing becomes an uncontrolled document once issued as hard or electronic copy.
 Customer to confirm current revision of drawing prior to ordering.



Chemical Composition Limits			Alloy: Z1
Standard: AS2239* (Most current revision)			
Zinc			
Element	min.	max.	
Cadmium	0.025	0.07	
Aluminium	0.10	0.50	
Silicon	-	0.005	
Copper	-	0.005	
Iron	-	0.005	
Lead	-	0.006	
Other Impurities			
- each	-	0.005	
- total	-	0.02	
Zinc	remainder		

* Corresponds to MIL-DTL-18001L alloy composition

Notes

1. Anodes are cast to comply with CAA's standard casting tolerances
2. All sharp edges removed for safe handling
3. Anode insert material to meet relevant Australian/International specifications



25 x 3 MILD STEEL INSERT STRAP

All dimensions are in mm (nominal)

Rev	Details of Change(s)	Date	Drawn	Verified
1	For Quotation	16 NOV 2018	R.N.	R.G.

Nett Weight Kg (nominal)	Gross Weight Kg (nominal)
1.30	1.40



Cathodic Anodes Australasia

cathodicanodes.com.au

Product Zinc Anode	
Part no. CDZ2-43-1S Mild Steel Strap	Scale 1 : 1
Drawing No: CD2477	Rev Sheet 1 1 of 1
Drawn by: R Northey	Date: 16 NOV 2018
Mould No: 55	Strap Sample 12 (Black)

