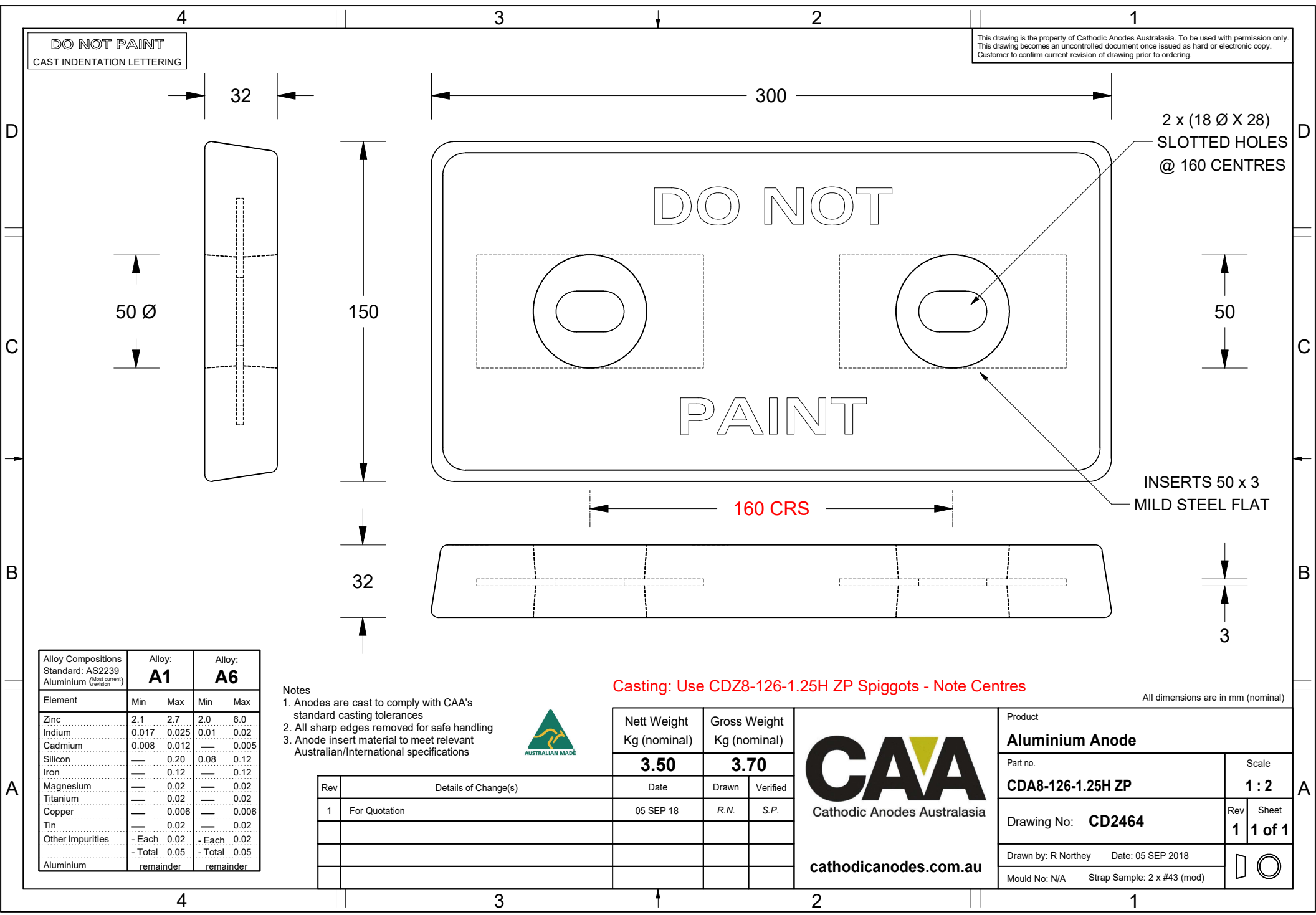


DO NOT PAINT
CAST INDENTATION LETTERING

This drawing is the property of Cathodic Anodes Australasia. To be used with permission only.
This drawing becomes an uncontrolled document once issued as hard or electronic copy.
Customer to confirm current revision of drawing prior to ordering.



2 x (18 Ø X 28)
SLOTTED HOLES
@ 160 CENTRES

INSERTS 50 x 3
MILD STEEL FLAT

Casting: Use CDZ8-126-1.25H ZP Spiggots - Note Centres

All dimensions are in mm (nominal)

- Notes
1. Anodes are cast to comply with CAA's standard casting tolerances
 2. All sharp edges removed for safe handling
 3. Anode insert material to meet relevant Australian/International specifications



Alloy Compositions Standard: AS2239 Aluminium <small>(Most current revision)</small>	Alloy: A1		Alloy: A6	
	Min	Max	Min	Max
Zinc	2.1	2.7	2.0	6.0
Indium	0.017	0.025	0.01	0.02
Cadmium	0.008	0.012	—	0.005
Silicon	—	0.20	0.08	0.12
Iron	—	0.12	—	0.12
Magnesium	—	0.02	—	0.02
Titanium	—	0.02	—	0.02
Copper	—	0.006	—	0.006
Tin	—	0.02	—	0.02
Other Impurities	- Each	0.02	- Each	0.02
Aluminium	- Total	0.05	- Total	0.05
		remainder		remainder

Nett Weight Kg (nominal)	Gross Weight Kg (nominal)
3.50	3.70

CAA
Cathodic Anodes Australasia
cathodicanodes.com.au

Product Aluminium Anode	
Part no. CDA8-126-1.25H ZP	Scale 1 : 2
Drawing No: CD2464	Rev 1
Sheet 1 of 1	
Drawn by: R Northey Date: 05 SEP 2018	
Mould No: N/A	Strap Sample: 2 x #43 (mod)

Rev	Details of Change(s)	Date	Drawn	Verified
1	For Quotation	05 SEP 18	R.N.	S.P.