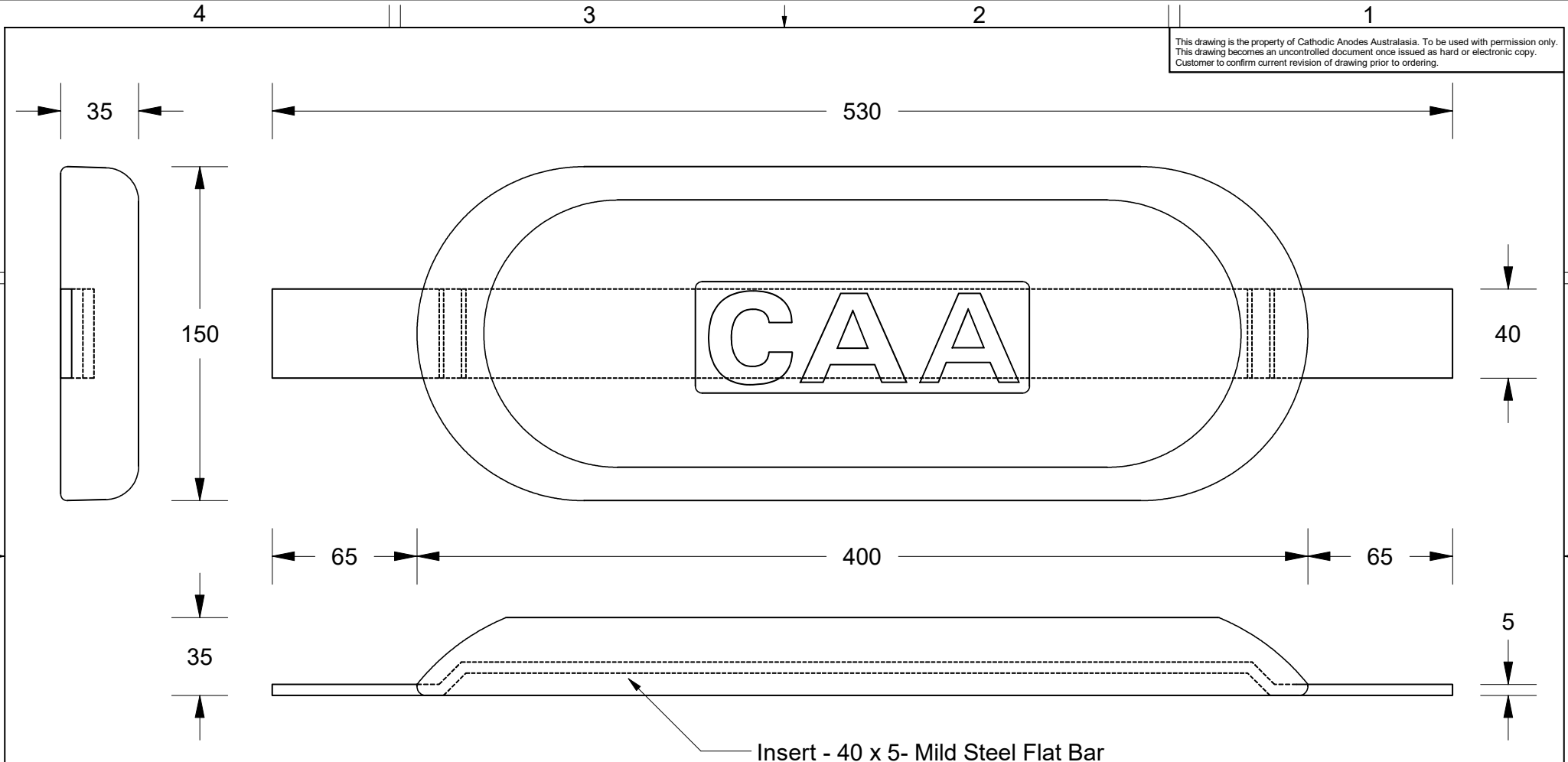


This drawing is the property of Cathodic Anodes Australasia. To be used with permission only.
 This drawing becomes an uncontrolled document once issued as hard or electronic copy.
 Customer to confirm current revision of drawing prior to ordering.



Insert - 40 x 5- Mild Steel Flat Bar

Alloy Compositions Standard: AS2239 Aluminium (Most current revision)	Alloy: A1		Alloy: A6	
	Min	Max	Min	Max
Zinc	2.1	2.7	2.0	6.0
Indium	0.017	0.025	0.01	0.02
Cadmium	0.008	0.012	—	0.005
Silicon	—	0.20	0.08	0.12
Iron	—	0.12	—	0.12
Magnesium	—	0.02	—	0.02
Titanium	—	0.02	—	0.02
Copper	—	0.006	—	0.006
Tin	—	0.02	—	0.02
Other Impurities	- Each	0.02	- Each	0.02
	- Total	0.05	- Total	0.05
Aluminium	remainder		remainder	

Notes

- Anodes are cast to comply with CAA's standard casting tolerances
- All sharp edges removed for safe handling
- Anode insert material to meet relevant Australian/International specifications



All dimensions are in mm (nominal)

Nett Weight Kg (nominal)	Gross Weight Kg (nominal)	
4.20	5.00	
Date	Drawn	Verified
17 April 2018	R.N.	J.L.



cathodicanodes.com.au

Product Aluminium Anode	
Part no. CDA-5S Type 3	Scale 1 : 2.5
Drawing No: CD2451	Rev 1
Drawn by: R Northey	Date: 17 APR 2018
Mould No: N/A	Strap Sample: 44
Sheet 1 of 1	

Rev	Details of Change(s)	Date	Drawn	Verified
1	For Manufacture	17 April 2018	R.N.	J.L.