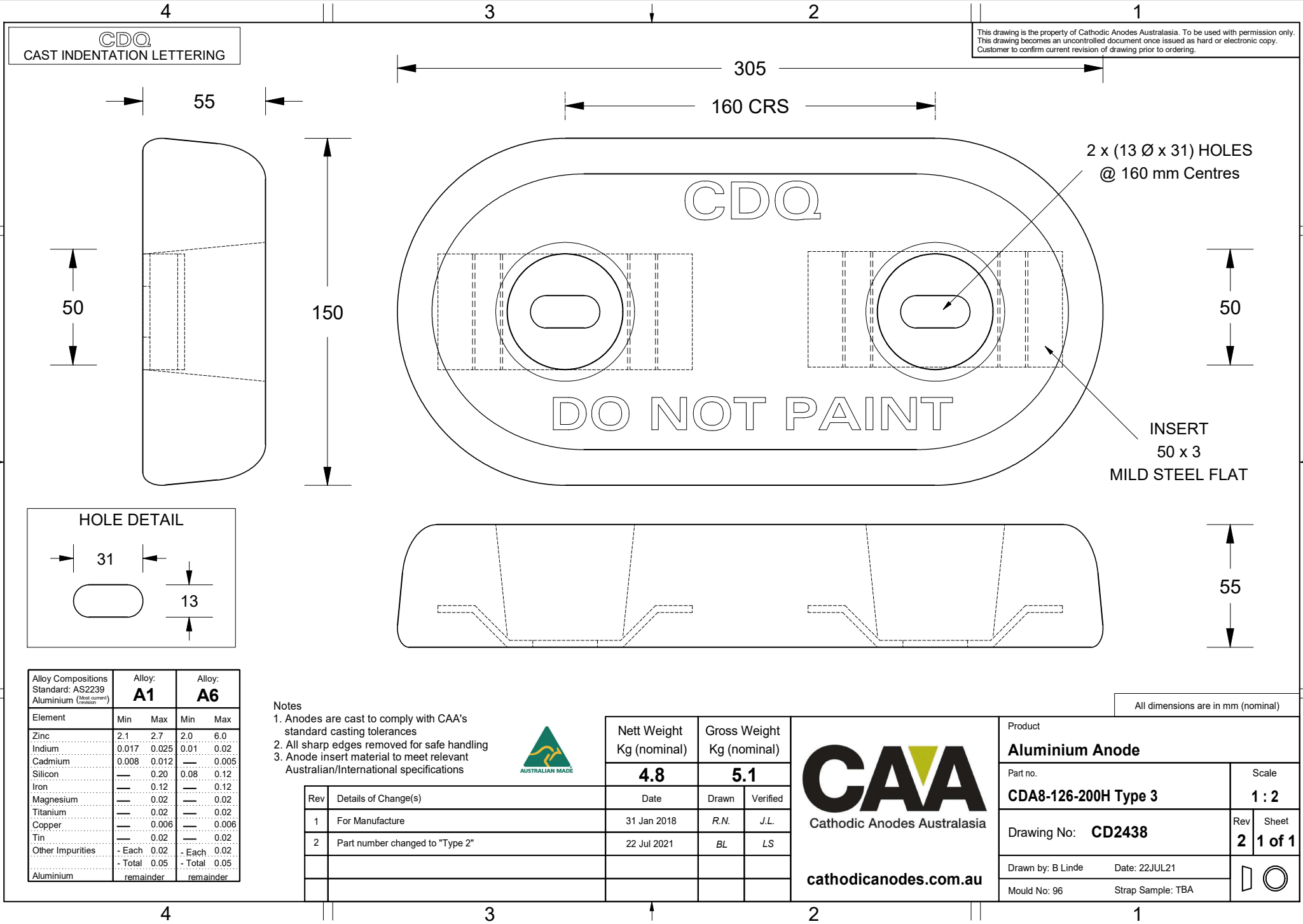
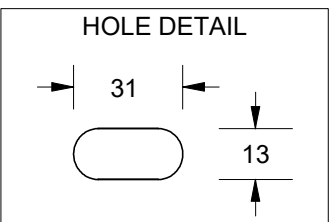


This drawing is the property of Cathodic Anodes Australasia. To be used with permission only. This drawing becomes an uncontrolled document once issued as hard or electronic copy. Customer to confirm current revision of drawing prior to ordering.



2 x (13 Ø x 31) HOLES @ 160 mm Centres

INSERT 50 x 3 MILD STEEL FLAT



| Alloy Compositions Standard: AS2239 | Alloy: A1 | | Alloy: A6 | |
|--|-----------|-------|-----------|-------|
| | Min | Max | Min | Max |
| Aluminium (Most current revision) | | | | |
| Zinc | 2.1 | 2.7 | 2.0 | 6.0 |
| Indium | 0.017 | 0.025 | 0.01 | 0.02 |
| Cadmium | 0.008 | 0.012 | — | 0.005 |
| Silicon | — | 0.20 | 0.08 | 0.12 |
| Iron | — | 0.12 | — | 0.12 |
| Magnesium | — | 0.02 | — | 0.02 |
| Titanium | — | 0.02 | — | 0.02 |
| Copper | — | 0.006 | — | 0.006 |
| Tin | — | 0.02 | — | 0.02 |
| Other Impurities | - Each | 0.02 | - Each | 0.02 |
| Aluminium | - Total | 0.05 | - Total | 0.05 |
| | remainder | | remainder | |

- Notes**
- Anodes are cast to comply with CAA's standard casting tolerances
 - All sharp edges removed for safe handling
 - Anode insert material to meet relevant Australian/International specifications



| Nett Weight Kg (nominal) | | Gross Weight Kg (nominal) | | |
|-----------------------------|---------------------------------|------------------------------|-------|----------|
| 4.8 | | 5.1 | | |
| Rev | Details of Change(s) | Date | Drawn | Verified |
| 1 | For Manufacture | 31 Jan 2018 | R.N. | J.L. |
| 2 | Part number changed to "Type 2" | 22 Jul 2021 | BL | LS |

CAA
Cathodic Anodes Australasia

cathodicanodes.com.au

| Product | | | |
|------------------------|----------------------|----------|-----------------|
| Aluminium Anode | | | |
| Part no. | CDA8-126-200H Type 3 | | Scale 1 : 2 |
| Drawing No: | CD2438 | Rev 2 | Sheet 1 of 1 |
| Drawn by: B Linde | Date: 22JUL21 | | |
| Mould No: 96 | Strap Sample: TBA | | |

All dimensions are in mm (nominal)