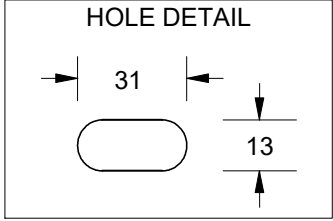
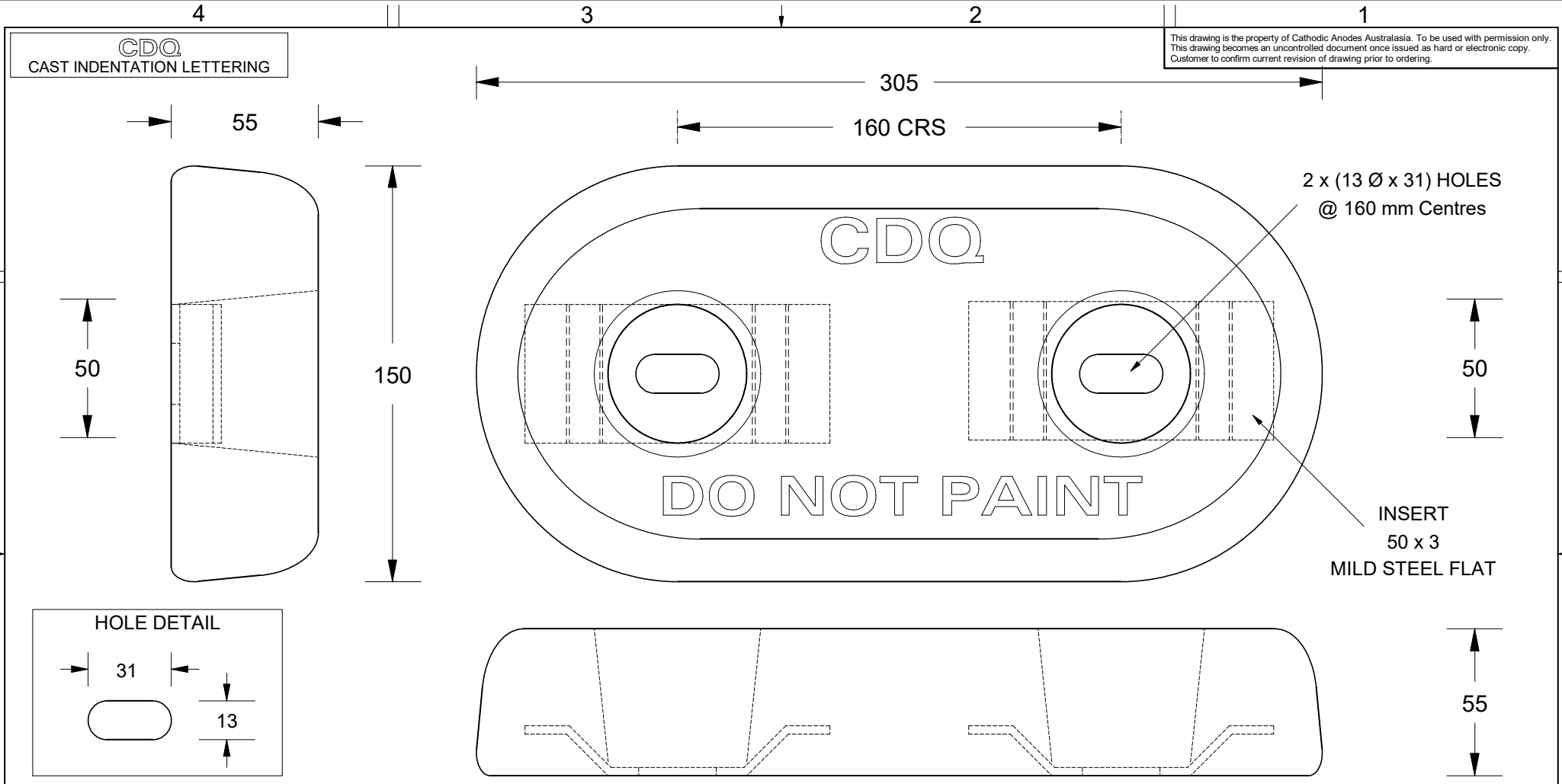


This drawing is the property of Cathodic Anodes Australasia. To be used with permission only.
 This drawing becomes an uncontrolled document once issued as hard or electronic copy.
 Customer to confirm current revision of drawing prior to ordering.



Chemical Composition Limits		Alloy:
Standard: AS2239* (Most current revision)		Z1
Element	min.	max.
Cadmium	0.025	0.07
Aluminium	0.10	0.50
Silicon	-	0.005
Copper	-	0.005
Iron	-	0.005
Lead	-	0.006
Other Impurities		
- each	-	0.005
- total	-	0.02
Zinc	remainder	

* Corresponds to MIL-DTL-18001L alloy composition

- Notes
1. Anodes are cast to comply with CAA's standard casting tolerances
 2. All sharp edges removed for safe handling
 3. Anode insert material to meet relevant Australian/International specifications



Nett Weight		Gross Weight		
Kg (nominal)		Kg (nominal)		
12.8		13.1		
Rev	Details of Change(s)	Date	Drawn	Verified
1	For Quotation	31 Jan 2018	R.N.	J.L.

CAA
 Cathodic Anodes Australasia
 cathodicanodes.com.au

Product			
Zinc Anode			
Part no.	CDZ8-126-200H Type 3		Scale 1 : 2
Drawing No:	CD2437		Rev 1
Drawn by: R Northey		Date: 31 Jan 2018	
Mould No: 96	Strap Sample: TBA		
		Sheet 1 of 1	

All dimensions are in mm (nominal)