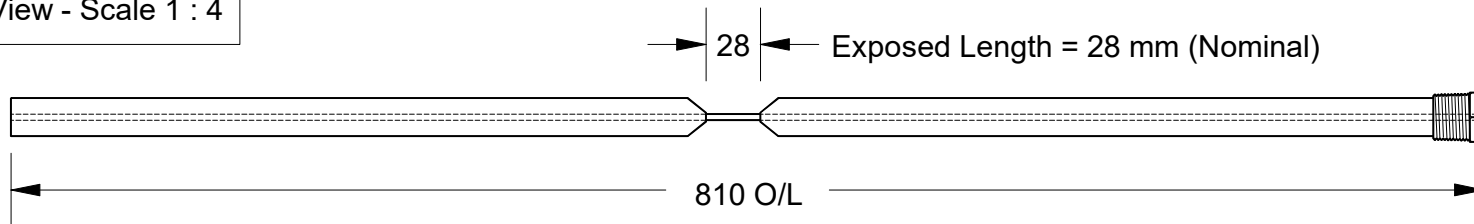


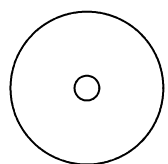
This drawing is the property of Cathodic Anodes Australasia. To be used with permission only. This drawing becomes an uncontrolled document once issued as hard or electronic copy. Customer to confirm current revision of drawing prior to ordering.

Component View - Scale 1 : 4

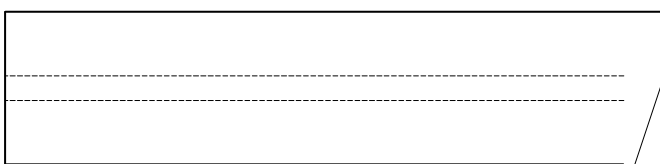


3.5 Ø (7 x 7) (Galvanised Steel Wire Rope) Core - Welded at Cap End

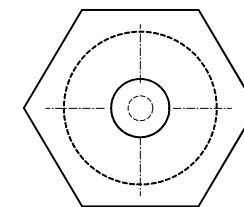
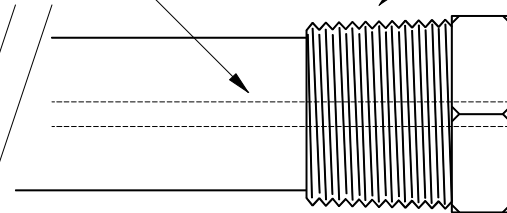
3/4 BSPT (Mild Steel) Cap



21 Ø



21 mm Ø Low Potential (AS2239-M2) Magnesium Rod



27 Hex

Chemical Composition Limits		Alloy:	
Standard: AS2239 (Most current revision)		M2	
Magnesium. Low Potential			
Element	min.	max.	
Aluminium	2.5	3.5	
Zinc	0.7	1.3	
Manganese	0.20	1.5	
Silicon	-	0.05	
Copper	-	0.006	
Iron	-	0.003	
Nickel	-	0.001	
Calcium	-	0.04	
Other Impurities	-	-	
- each	-	-	
- total	-	0.30	
Magnesium	-	remainder	

Notes

- Anodes are cast to comply with CAA's standard casting tolerances
- All sharp edges removed for safe handling
- Anode insert material to meet relevant Australian/International specifications

Rev	Details of Change(s)	Nett Weight		Gross Weight	
		kg (nominal)		kg (nominal)	
		0.524		0.574	
1	2013 Catalogue Version	18 JAN 18	R.N.	18 JAN 18	R.G.
2	Exposed (Steel Core) Length Shown = 28 mm	04 APR 19	R.N.	04 APR 19	L.S.



Cathodic Anodes Australasia

cathodicanodes.com.au

Product			
Magnesium Anode			
Part no.		Scale	
CDMR-M2-21-0810-F2		NTS	
Drawing No: CD2429		Rev	Sheet
		2	1 of 1
Drawn by: R Northey Date: 04 APR 2019			
All dimensions are in mm (nominal)			

