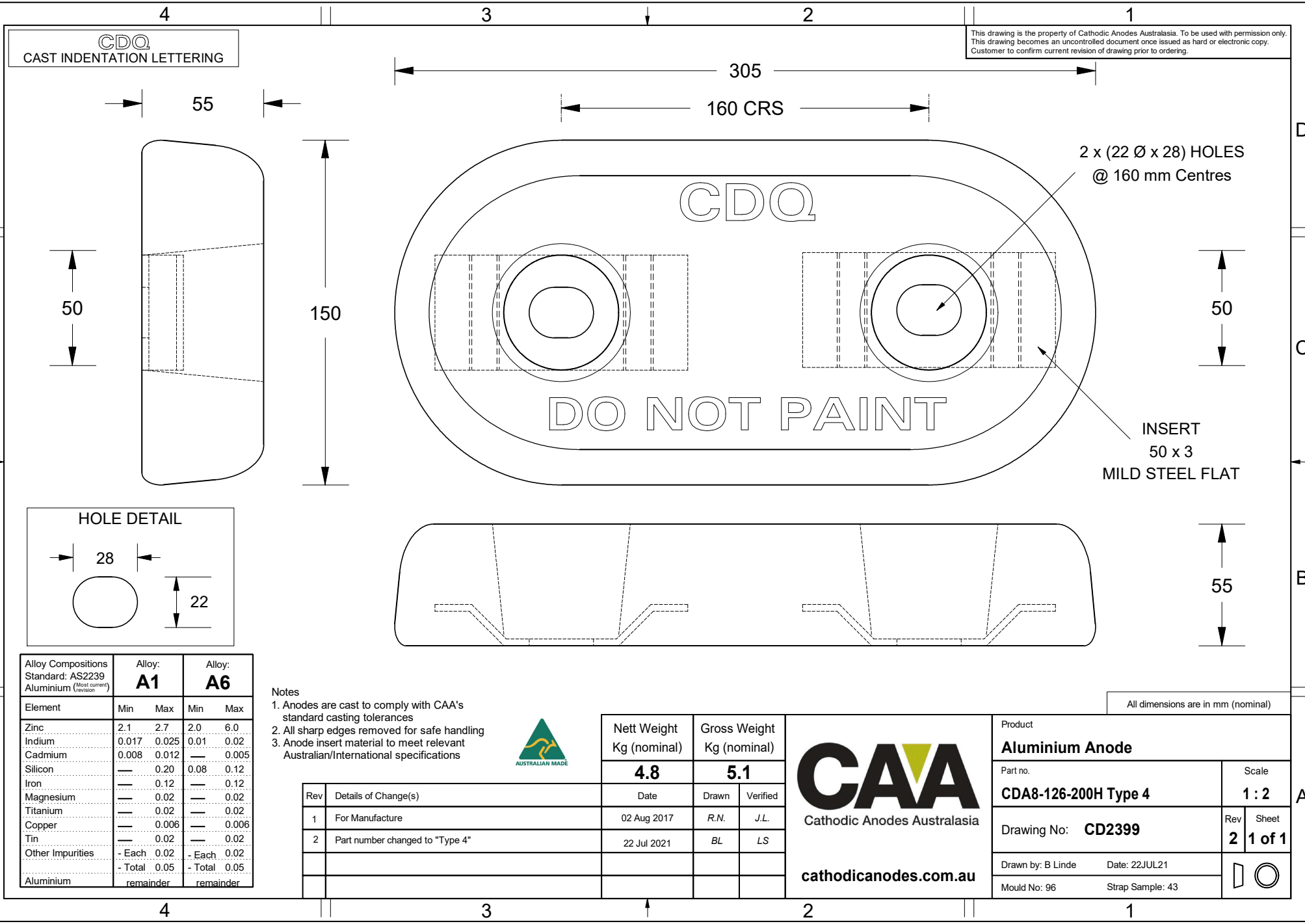


This drawing is the property of Cathodic Anodes Australasia. To be used with permission only. This drawing becomes an uncontrolled document once issued as hard or electronic copy. Customer to confirm current revision of drawing prior to ordering.

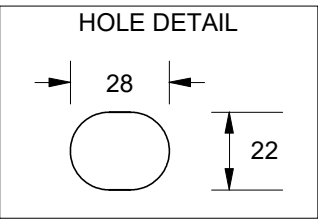


CDQ  
CAST INDENTATION LETTERING

2 x (22 Ø x 28) HOLES  
@ 160 mm Centres

INSERT  
50 x 3  
MILD STEEL FLAT

DO NOT PAINT



Alloy Compositions Standard: AS2239 Aluminium (Most current Version)	Alloy: <b>A1</b>		Alloy: <b>A6</b>	
	Min	Max	Min	Max
Zinc	2.1	2.7	2.0	6.0
Indium	0.017	0.025	0.01	0.02
Cadmium	0.008	0.012	—	0.005
Silicon	—	0.20	0.08	0.12
Iron	—	0.12	—	0.12
Magnesium	—	0.02	—	0.02
Titanium	—	0.02	—	0.02
Copper	—	0.006	—	0.006
Tin	—	0.02	—	0.02
Other Impurities	- Each	0.02	- Each	0.02
Aluminium	- Total	0.05	- Total	0.05
		remainder		remainder

- Notes
- Anodes are cast to comply with CAA's standard casting tolerances
  - All sharp edges removed for safe handling
  - Anode insert material to meet relevant Australian/International specifications



Rev	Details of Change(s)	Date	Drawn	Verified
1	For Manufacture	02 Aug 2017	R.N.	J.L.
2	Part number changed to "Type 4"	22 Jul 2021	BL	LS

**CAA**  
Cathodic Anodes Australasia  
cathodicanodes.com.au

Product <b>Aluminium Anode</b>		Scale <b>1 : 2</b>	
Part no. <b>CDA8-126-200H Type 4</b>		Rev <b>2</b>	Sheet <b>1 of 1</b>
Drawing No: <b>CD2399</b>		Date: 22JUL21	
Mould No: 96		Strap Sample: 43	

All dimensions are in mm (nominal)