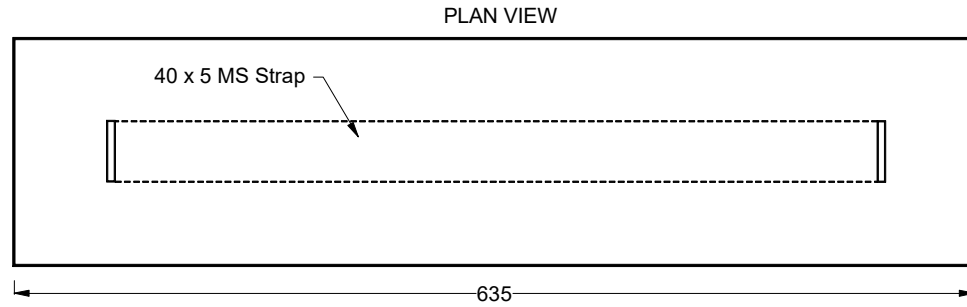
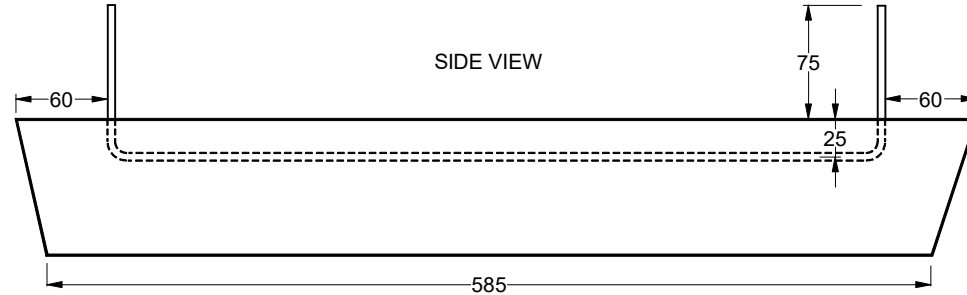
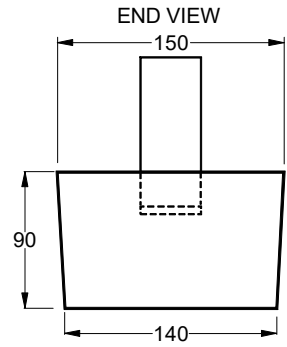


This drawing is the property of Cathodic Anodes Australasia. To be used with permission only.
 This drawing becomes an uncontrolled document once issued as hard or electronic copy.
 Customer to confirm current revision of drawing prior to ordering.



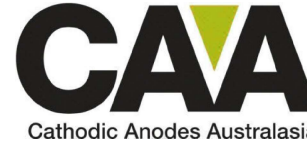
Chemical Composition Limits		Alloy:
Standard: AS2239* (Most current revision)		Z1
Element	min.	max.
Cadmium	0.025	0.07
Aluminium	0.10	0.50
Silicon	-	0.005
Copper	-	0.005
Iron	-	0.005
Lead	-	0.006
Other Impurities		
- each	-	0.005
- total	-	0.02
Zinc		remainder

Notes

- Anodes are cast to comply with CAA's standard casting tolerances
- All sharp edges removed for safe handling
- Anode insert material to meet relevant Australian/International specifications



Nett Weight Kg (nominal)	Gross Weight Kg (nominal)
55.1	56.2



cathodicanodes.com.au

All dimensions are in mm (nominal)

Product Zinc Anode		Scale 1 to 5
Part no. CDZ-55S Type 2 Modified Insert		Rev Sheet 1 1 of 1
Drawing no. CD2398		
Drawn by: BL Verified by: JL Date: 04JUL17		
Mould no: 8		

Rev	Details of Change(s)	Date	Drawn	Verified
1	For manufacture	04JUL17	<i>BL</i>	<i>JL</i>

* Corresponds to MIL-DTL-18001L alloy composition