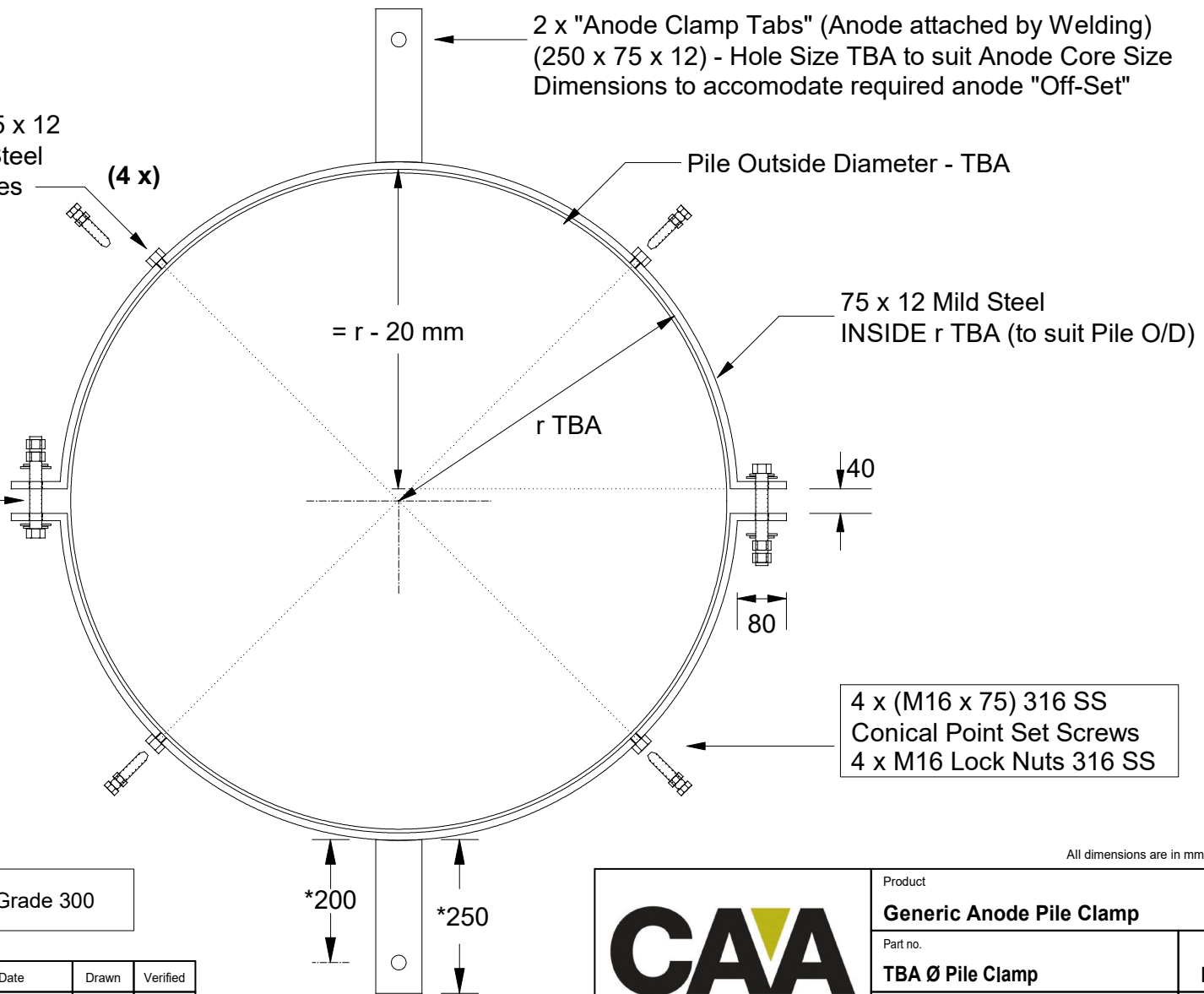


This drawing is the property of Cathodic Anodes Australasia. To be used with permission only.  
 This drawing becomes an uncontrolled document once issued as hard or electronic copy.  
 Customer to confirm current revision of drawing prior to ordering.

DRILL - 17 Ø Clearance Hole in 75 x 12  
 WELD - M16 Nut - 316 Stainless Steel  
 Nominal 45 Degree from Centrelines

2 x "Anode Clamp Tabs" (Anode attached by Welding)  
 (250 x 75 x 12) - Hole Size TBA to suit Anode Core Size  
 Dimensions to accomodate required anode "Off-Set"



2 x (M16 x 100) Set Screws  
 4 x Flat Washers  
 4 x Spring Washers  
 4 x Lock Nuts  
 all Zinc Plated High Tensile

4 x (M16 x 75) 316 SS  
 Conical Point Set Screws  
 4 x M16 Lock Nuts 316 SS

- Notes
1. Anodes are cast to comply with CAA's standard casting tolerances
  2. All sharp edges removed for safe handling
  3. Anode insert material to meet relevant Australian/International specifications

Notes: 75 x 12 Steel - AS / NZS 3679.1 Grade 300

All dimensions are in mm (nominal)

Rev	Details of Change(s)	Date	Drawn	Verified
1	For Quotation	03 May 2017	R.N.	J.L.

**CAA**  
 Cathodic Anodes Australasia  
 cathodicanodes.com.au

Product <b>Generic Anode Pile Clamp</b>		Scale <b>N.T.S.</b>	
Part no. <b>TBA Ø Pile Clamp</b>		Rev <b>1</b>	Sheet <b>1 of 1</b>
Drawing No: <b>CD2381</b>		Drawn by: R Northey Date: 03 MAY 2017	