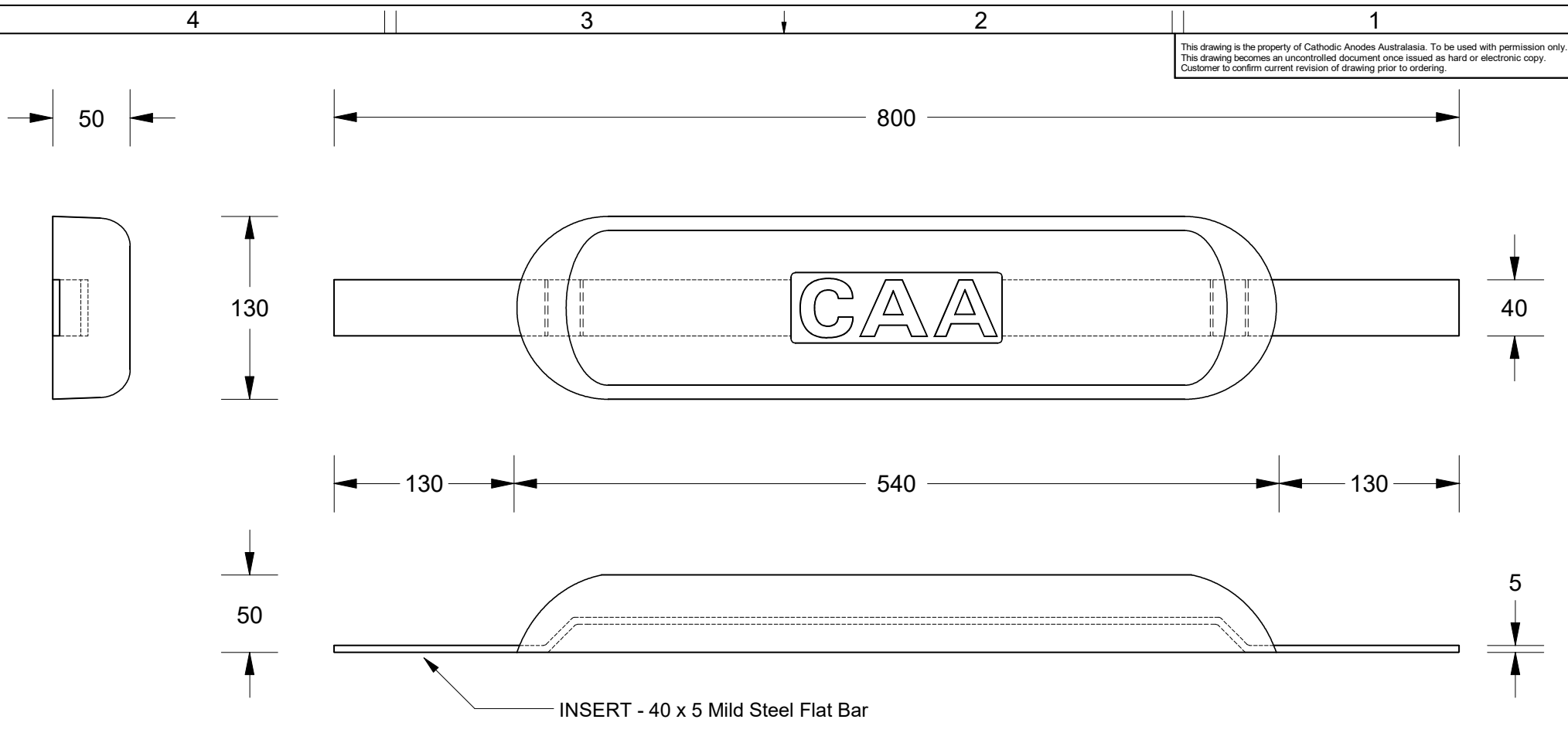


This drawing is the property of Cathodic Anodes Australasia. To be used with permission only. This drawing becomes an uncontrolled document once issued as hard or electronic copy. Customer to confirm current revision of drawing prior to ordering.



Alloy Compositions Standard: AS2239 Aluminium (Most current revision)	Alloy: A1		Alloy: A6	
	Min	Max	Min	Max
Zinc	2.1	2.7	2.0	6.0
Indium	0.017	0.025	0.01	0.02
Cadmium	0.008	0.012	—	0.005
Silicon	—	0.20	0.08	0.12
Iron	—	0.12	—	0.12
Magnesium	—	0.02	—	0.02
Titanium	—	0.02	—	0.02
Copper	—	0.006	—	0.006
Tin	—	0.02	—	0.02
Other Impurities	- Each	0.02	- Each	0.02
	- Total	0.05	- Total	0.05
Aluminium	remainder		remainder	

- Notes
- Anodes are cast to comply with CAA's standard casting tolerances
 - All sharp edges removed for safe handling
 - Anode insert material to meet relevant Australian/International specifications



Rev	Details of Change(s)	Date	Drawn	Verified
1	For Manufacture	20 April 2017	R.N.	J.L.

CAA
 Cathodic Anodes Australasia
cathodicanodes.com.au

Product Aluminium Anode	
Part no. CAA Branded WA8	Scale 1 : 4
Drawing No: CD2379	Rev 1 Sheet 1 of 1
Drawn by: R Northey Date: 20 APR 2017	
Mould No: N/A Strap Sample: 01	

All dimensions are in mm (nominal)

4 3 2 1

50 800 130 40 130 540 130 5 50

INSERT - 40 x 5 Mild Steel Flat Bar

CAA