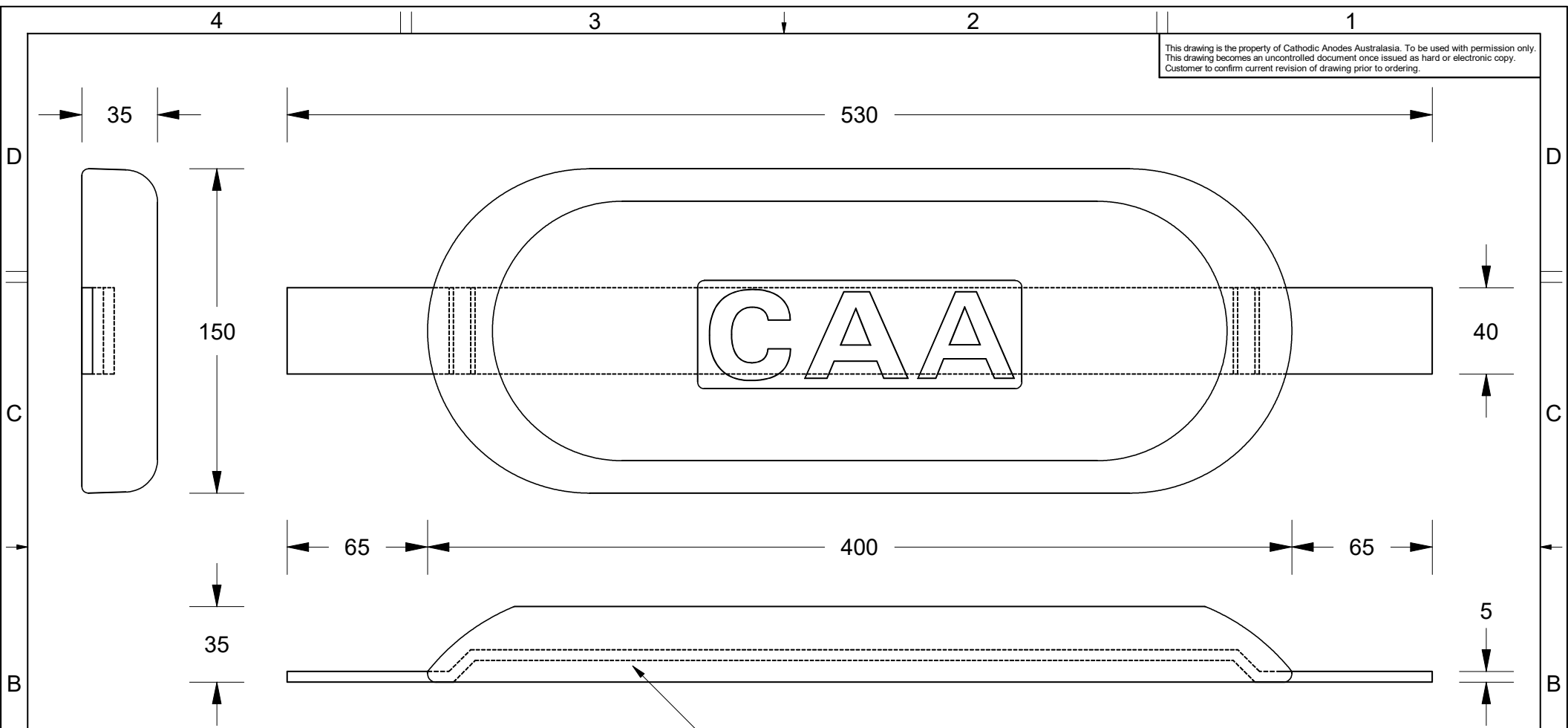


This drawing is the property of Cathodic Anodes Australasia. To be used with permission only.  
 This drawing becomes an uncontrolled document once issued as hard or electronic copy.  
 Customer to confirm current revision of drawing prior to ordering.



Insert - 40 x 5- Mild Steel Flat Bar

Alloy Compositions Standard: AS2239 Aluminium (Most current revision)	Alloy: <b>A1</b>		Alloy: <b>A6</b>	
	Min	Max	Min	Max
Zinc	2.1	2.7	2.0	6.0
Indium	0.017	0.025	0.01	0.02
Cadmium	0.008	0.012	—	0.005
Silicon	—	0.20	0.08	0.12
Iron	—	0.12	—	0.12
Magnesium	—	0.02	—	0.02
Titanium	—	0.02	—	0.02
Copper	—	0.006	—	0.006
Tin	—	0.02	—	0.02
Other Impurities	- Each	0.02	- Each	0.02
	- Total	0.05	- Total	0.05
Aluminium	remainder		remainder	

Notes

- Anodes are cast to comply with CAA's standard casting tolerances
- All sharp edges removed for safe handling
- Anode insert material to meet relevant Australian/International specifications



Nett Weight Kg (nominal)	Gross Weight Kg (nominal)
<b>4.20</b>	<b>5.00</b>



[cathodicanodes.com.au](http://cathodicanodes.com.au)

Rev	Details of Change(s)	Date	Drawn	Verified
1	For Manufacture	20 April 2017	R.N.	J.L.

All dimensions are in mm (nominal)

Product <b>Aluminium Anode</b>	
Part no. <b>CAA Branded WA5</b>	Scale <b>1 : 2.5</b>
Drawing No: <b>CD2378</b>	Rev 1 Sheet 1 of 1
Drawn by: R Northey Date: 20 APR 2017	
Mould No: N/A Strap Sample: 44	