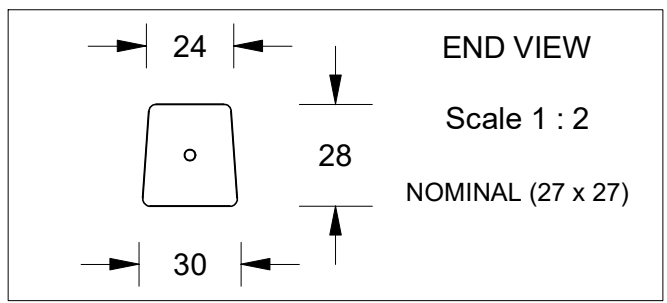
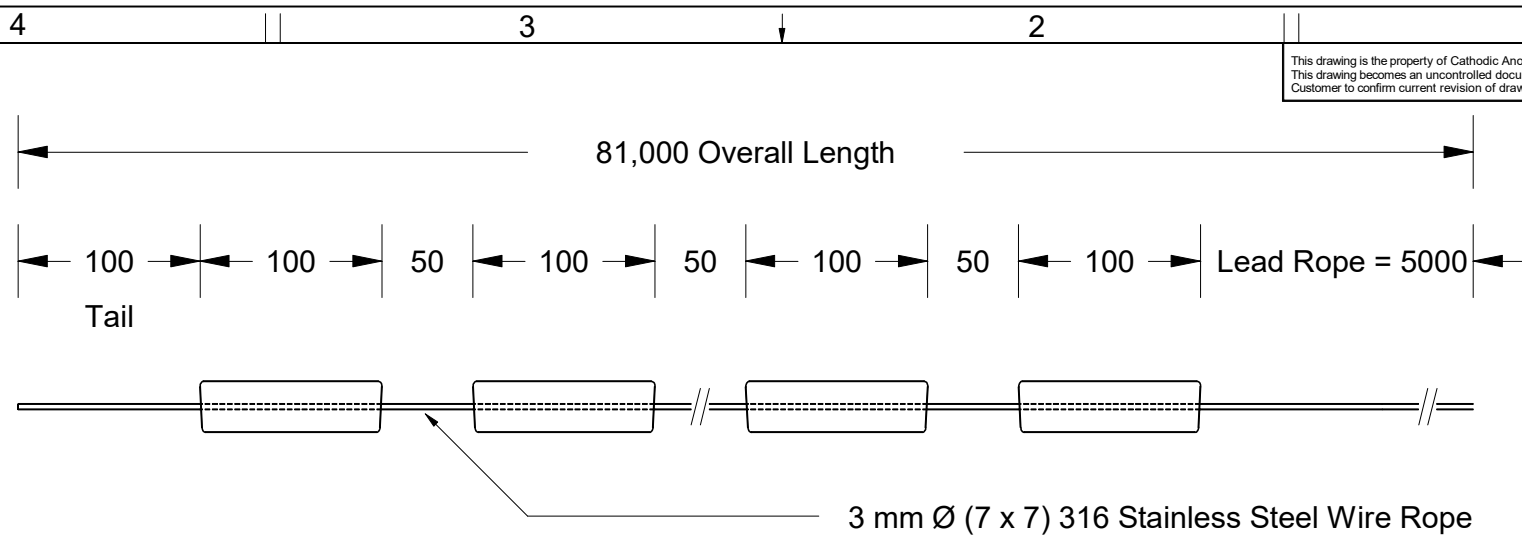


This drawing is the property of Cathodic Anodes Australasia. To be used with permission only. This drawing becomes an uncontrolled document once issued as hard or electronic copy. Customer to confirm current revision of drawing prior to ordering.



Total Overall Length = 81 Metres

Lead Rope = 5 Metres

Anode String = 76 Metres

Anode Centres @ 150 mm

76 m / 0.15 Centres = 506 Anodes

String Net Weight = 96 kg

Chemical Composition Limits			Alloy:
Standard: AS2239 (Most current revision)			A6
Element	min.	max.	
Zinc	2.0	6.0	
Indium	0.01	0.02	
Cadmium	-	0.005	
Silicon	0.08	0.12	
Iron	-	0.12	
Magnesium	-	0.02	
Titanium	-	0.02	
Copper	-	0.006	
Tin	-	0.02	
Other Impurities			
- each	-	0.02	
- total	-	0.05	
Aluminium	remainder		

- Notes
- Anodes are cast to comply with CAA's standard casting tolerances
 - All sharp edges removed for safe handling
 - Anode insert material to meet relevant Australian/International specifications



Rev	Details of Change(s)	Date	Drawn	Verified
1	For Quotation	29 August 2016	R.N.	J.L.

Nett Weight Kg (nominal)	Gross Weight Kg (nominal)
96.0	100.5

CAA
Cathodic Anodes Australasia

cathodicanodes.com.au

Product		Aluminium Anode	
Part no.	CDA - 00 String Anode	Scale	1 : 4
Drawing No:	CD2316	Rev	1
Drawn by: R Northey	Date: 29 AUG 2016	Sheet	1 of 1

All dimensions are in mm (nominal)