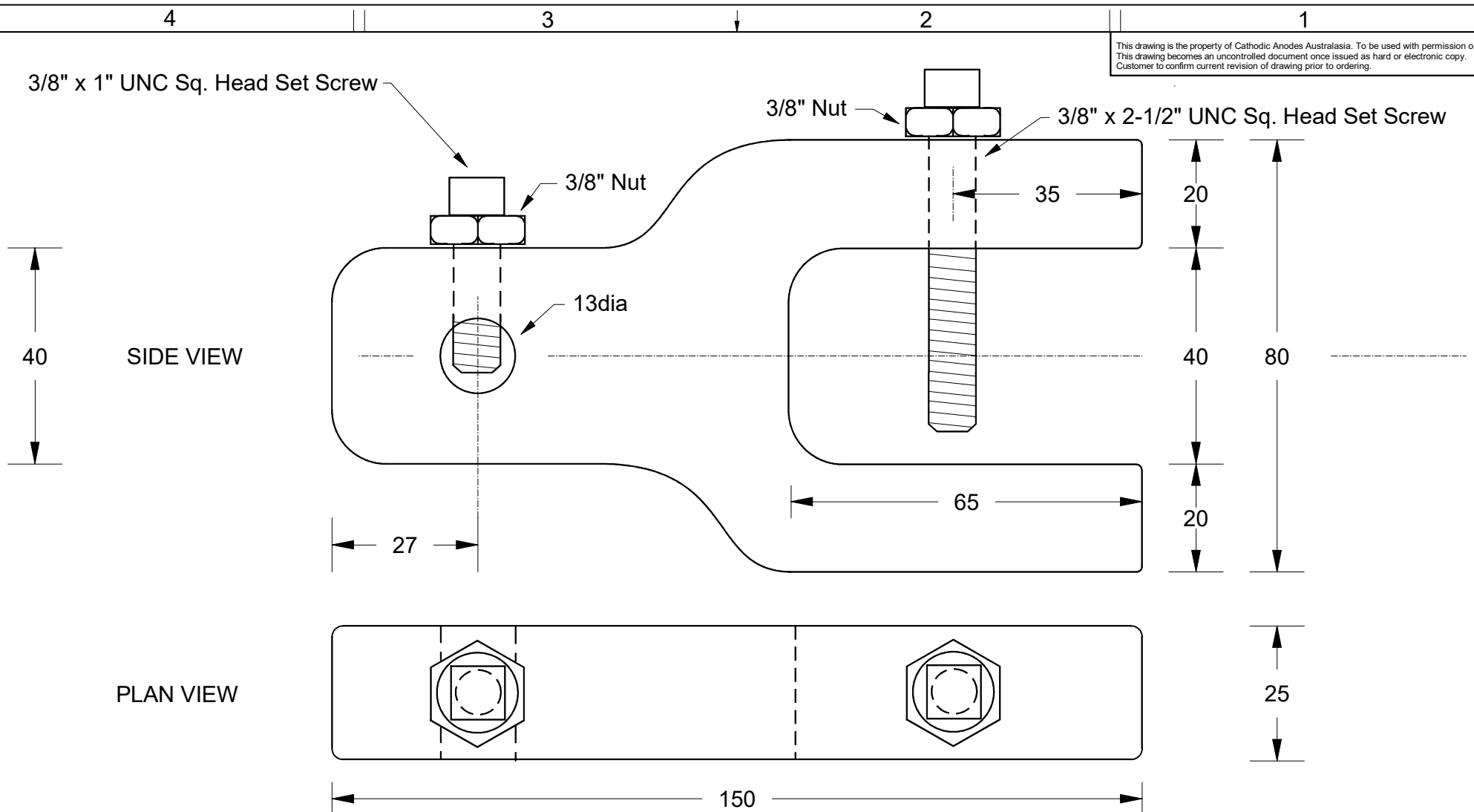


This drawing is the property of Cathodic Anodes Australasia. To be used with permission only. This drawing becomes an uncontrolled document once issued as hard or electronic copy. Customer to confirm current revision of drawing prior to ordering.



**Note: Square Head Set Screws to be Cup Point Case Hardened**

- Notes
1. Anodes are cast to comply with CAA's standard casting tolerances
  2. All sharp edges removed for safe handling
  3. Anode insert material to meet relevant Australian/International specifications

Rev	Details of Change(s)	Date	Drawn	Verified
1	For Quotation	23 August 2016	R.N.	J.L.

**CAA**  
Cathodic Anodes Australasia  
cathodicanodes.com.au

Product <b>Non Standard Mounting Clamp</b>	
Part no. <b>n/a</b>	Scale <b>1 : 1</b>
Drawing No: <b>CD2310</b>	Rev 1 Sheet 1 of 1
Drawn by: R.N.	Date: 23 AUG 2016
All dimensions are in mm (nominal)	