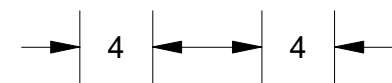
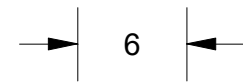
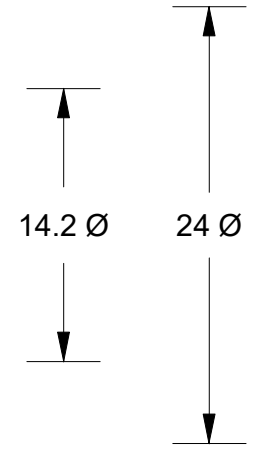
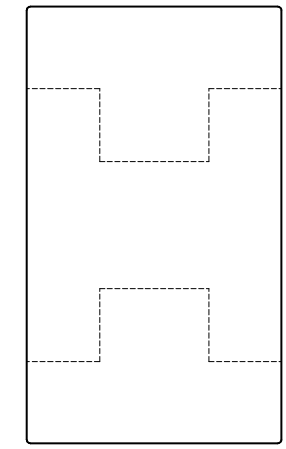
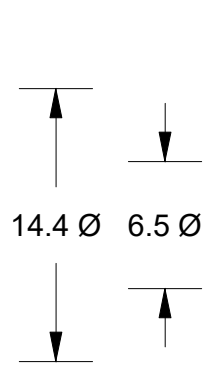
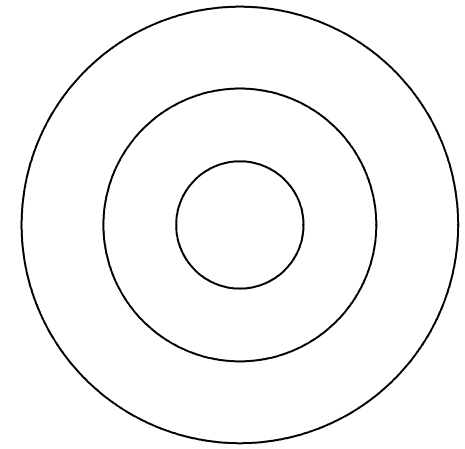
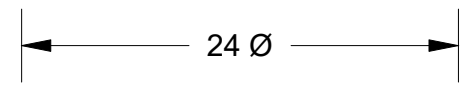
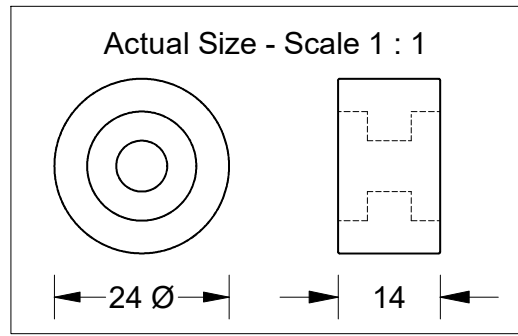


This drawing is the property of Cathodic Anodes Australasia. To be used with permission only. This drawing becomes an uncontrolled document once issued as hard or electronic copy. Customer to confirm current revision of drawing prior to ordering.



NO SHARP EDGES

Chemical Composition Limits		Alloy:
Element	min.	max.
Standard: AS2239* (Most current revision)		
Zinc		
		Z1
Cadmium	0.025	0.07
Aluminium	0.10	0.50
Silicon	-	0.005
Copper	-	0.005
Iron	-	0.005
Lead	-	0.006
Other Impurities		
- each	-	0.005
- total	-	0.02
Zinc		remainder

* Corresponds to MIL-DTL-18001L alloy composition

- Notes
1. Anodes are cast to comply with CAA's standard casting tolerances
 2. All sharp edges removed for safe handling
 3. Anode insert material to meet relevant Australian/International specifications

Rev	Details of Change(s)	Date	Drawn	Verified
1	For Quotation	26 July 2016	R.N.	R.G.

Nett Weight Kg (nominal)	Gross Weight Kg (nominal)
0.032	N/A



cathodicanodes.com.au

Product		Zinc Anode	
Part no.	Honda Engine Washer	Scale	2.5 : 1
Drawing No:	CD2300	Rev	1
Drawn by: R Northey	Date: 26 JUL 2016	Sheet	1 of 1

All dimensions are in mm (nominal)