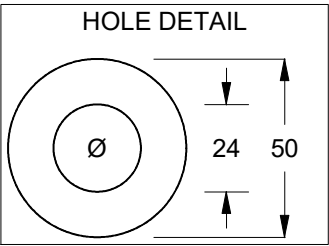
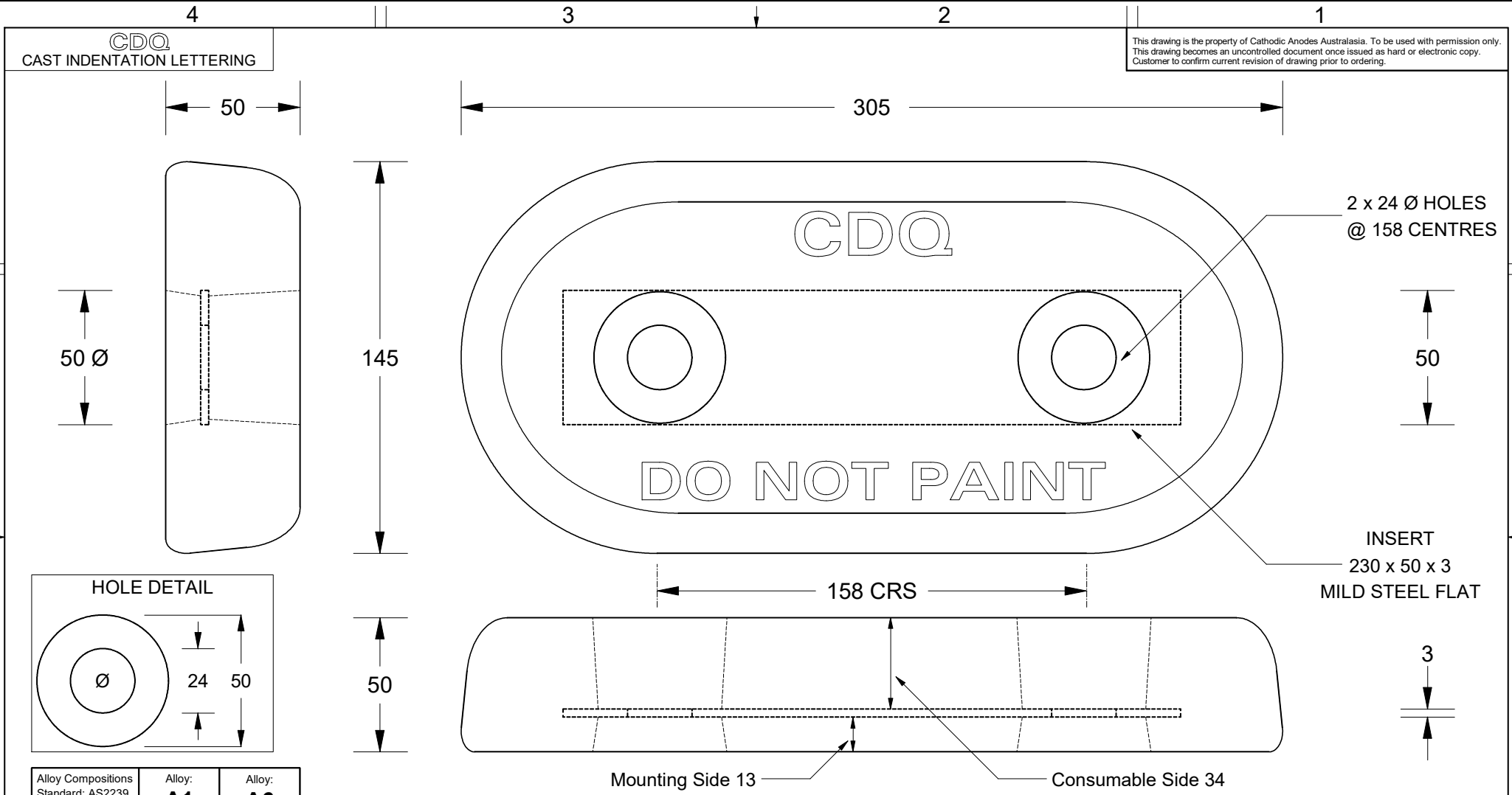


This drawing is the property of Cathodic Anodes Australasia. To be used with permission only. This drawing becomes an uncontrolled document once issued as hard or electronic copy. Customer to confirm current revision of drawing prior to ordering.



Alloy Compositions Standard: AS2239 Aluminium	Alloy: A1		Alloy: A6	
	Min	Max	Min	Max
Zinc	2.1	2.7	2.0	6.0
Indium	0.017	0.025	0.01	0.02
Cadmium	0.008	0.012	—	0.005
Silicon	—	0.20	0.08	0.12
Iron	—	0.12	—	0.12
Magnesium	—	0.02	—	0.02
Titanium	—	0.02	—	0.02
Copper	—	0.006	—	0.006
Tin	—	0.02	—	0.02
Other Impurities	- Each	0.02	- Each	0.02
	- Total	0.05	- Total	0.05
Aluminium	remainder		remainder	

- Notes
- Anodes are cast to comply with CAA's standard casting tolerances
 - All sharp edges removed for safe handling
 - Anode insert material to meet relevant Australian/International specifications



Nett Weight Kg (nominal)	Gross Weight Kg (nominal)			
4.8	5.1			
Rev	Details of Change(s)	Date	Drawn	Verified
1	For Manufacture	06 July 2016	R.N.	B.L.

CAA
Cathodic Anodes Australasia
cathodicanodes.com.au

Product Aluminium Anode	
Part no. CDA8-126-200H	Scale 1 : 2
Drawing No: CD2280	Rev 1 Sheet 1 of 1
Drawn by: R Northey	Date: 06 JUL 2016
Mould No: 96	Strap Sample: 14

All dimensions are in mm (nominal)