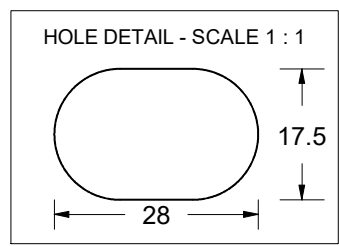
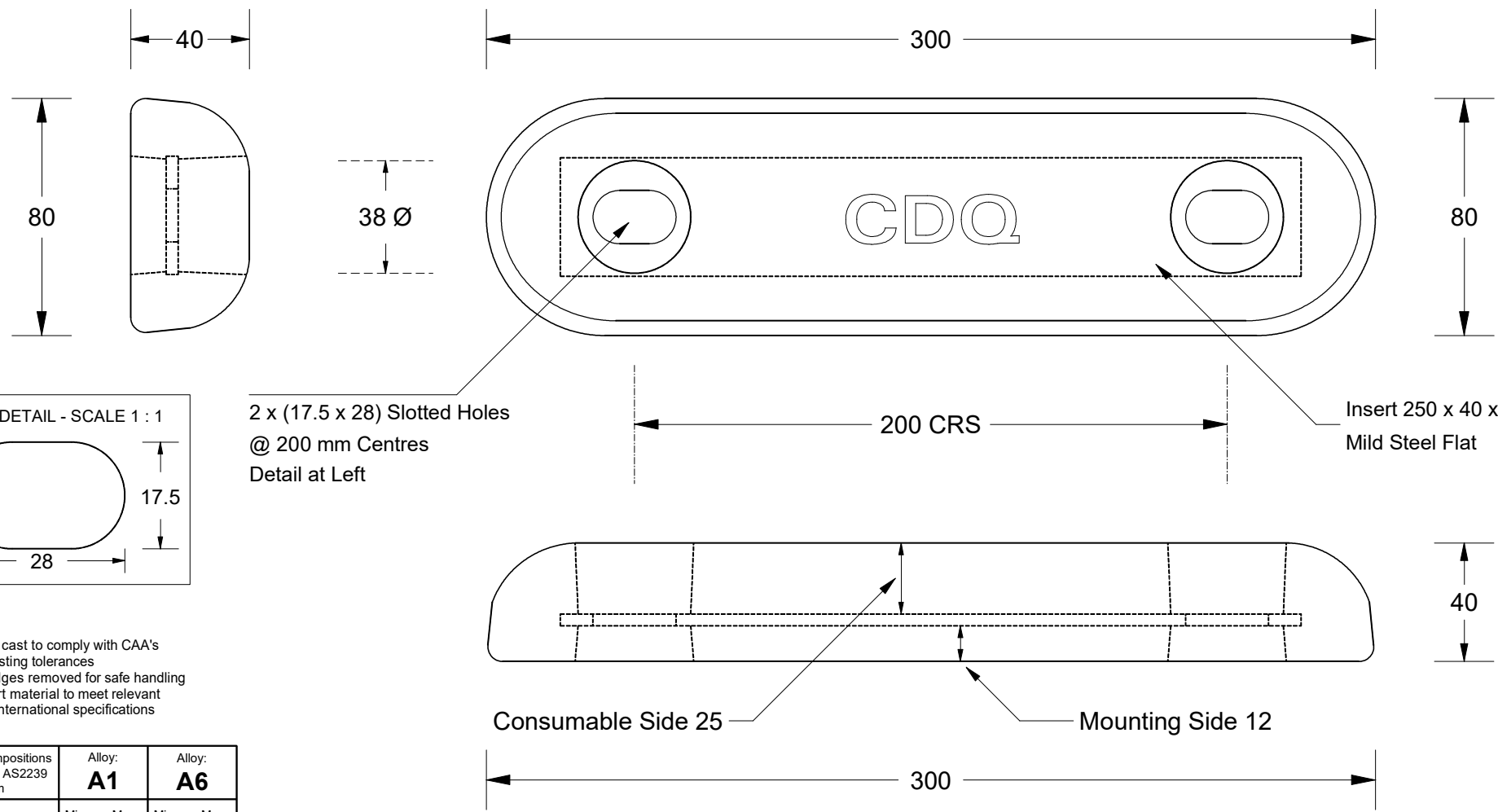


This drawing is the property of Cathodic Anodes Australasia. To be used with permission only. This drawing becomes an uncontrolled document once issued as hard or electronic copy. Customer to confirm current revision of drawing prior to ordering.



2 x (17.5 x 28) Slotted Holes @ 200 mm Centres Detail at Left

Insert 250 x 40 x 3 Mild Steel Flat

- Notes
1. Anodes are cast to comply with CAA's standard casting tolerances
  2. All sharp edges removed for safe handling
  3. Anode insert material to meet relevant Australian/International specifications

Alloy Compositions Standard: AS2239 Aluminium	Alloy: A1		Alloy: A6	
	Min	Max	Min	Max
Zinc	2.1	2.7	2.0	6.0
Indium	0.017	0.025	0.01	0.02
Cadmium	0.008	0.012	—	0.005
Silicon	—	0.20	0.08	0.12
Iron	—	0.12	—	0.12
Magnesium	—	0.02	—	0.02
Titanium	—	0.02	—	0.02
Copper	—	0.006	—	0.006
Tin	—	0.02	—	0.02
Other Impurities	- Each	0.02	- Each	0.02
	- Total	0.05	- Total	0.05
Aluminium	remainder		remainder	



Nett Weight Kg (nominal)	Gross Weight Kg (nominal)	
<b>1.7</b>	<b>1.9</b>	
Date	Drawn	Verified
29 JUN 16	R.N.	J.L.
Rev	Details of Change(s)	
1	For Manufacture	

**CAA**  
Cathodic Anodes Australasia  
cathodicanodes.com.au

Product	
<b>Aluminium Anode</b>	
Part no.	Scale
<b>CDA-123-150H</b>	<b>1 : 2</b>
Drawing No: <b>CD2279</b>	Rev <b>1</b> Sheet <b>1 of 1</b>
Drawn by: R Northey	Date: 29 JUN 2016
Mould No: 91	Strap Sample : 33

All dimensions are in mm (nominal)