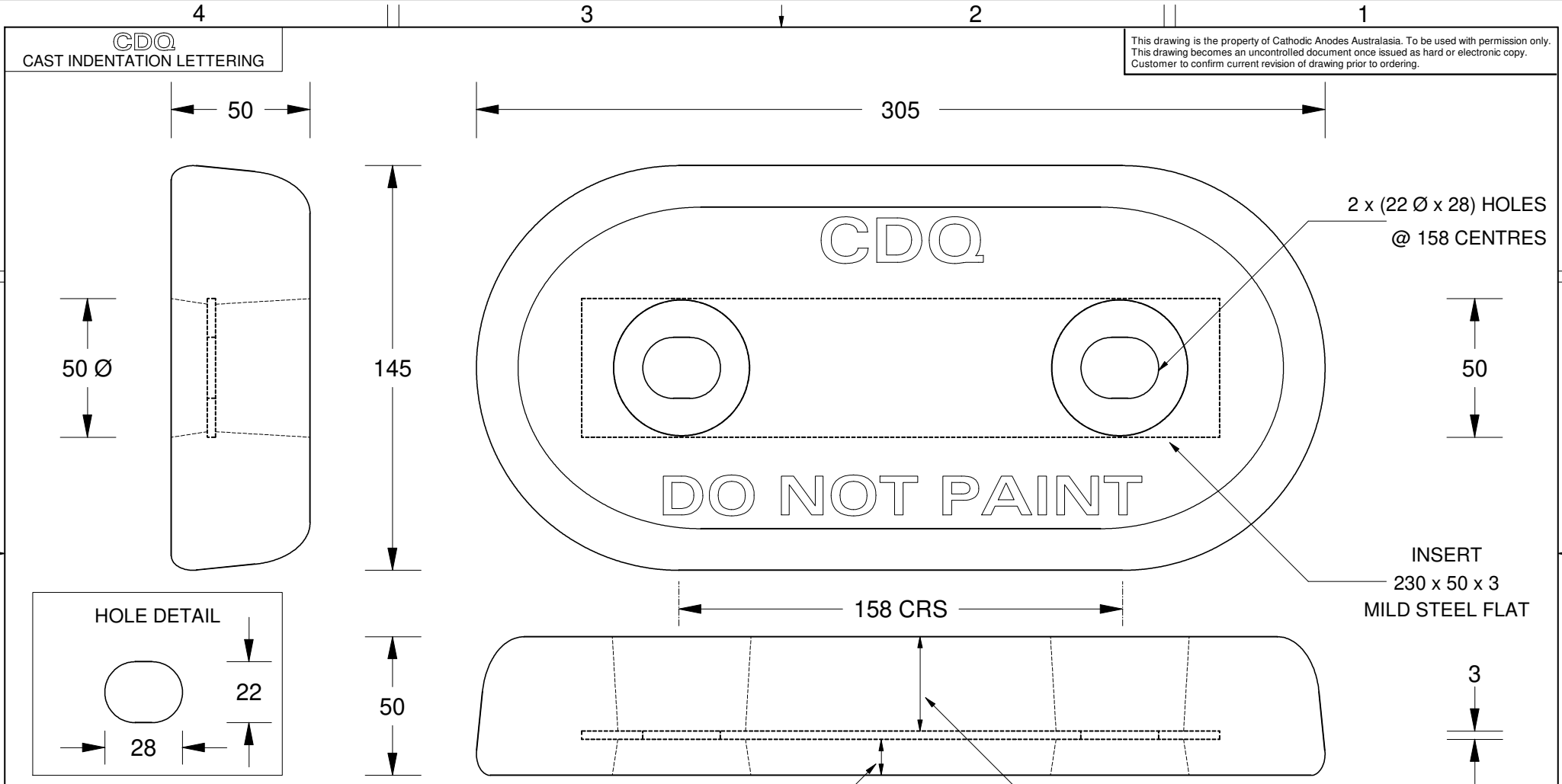


This drawing is the property of Cathodic Anodes Australasia. To be used with permission only. This drawing becomes an uncontrolled document once issued as hard or electronic copy. Customer to confirm current revision of drawing prior to ordering.



CDQ
CAST INDENTATION LETTERING

2 x (22 Ø x 28) HOLES
@ 158 CENTRES

INSERT
230 x 50 x 3
MILD STEEL FLAT

Mounting Side 13 Consumable Side 34

- Notes
- Anodes are cast to comply with CAA's standard casting tolerances
 - All sharp edges removed for safe handling
 - Anode insert material to meet relevant Australian/International specifications



All dimensions are in mm (nominal)

Chemical Composition Limits		Alloy:
Element	min.	max.
Zinc	2.0	6.0
Indium	0.01	0.02
Cadmium	-	0.005
Silicon	0.08	0.12
Iron	-	0.12
Magnesium	-	0.02
Titanium	-	0.02
Copper	-	0.006
Tin	-	0.02
Other Impurities	-	-
- each	-	0.02
- total	-	0.05
Aluminium	remainder	

A6

Rev	Details of Change(s)	Date	Drawn	Verified
1	For Manufacture	21 JUL 21	BL	LS

Nett Weight Kg (nominal)	Gross Weight Kg (nominal)
4.8	5.1

CAA
Cathodic Anodes Australasia

cathodicanodes.com.au

Product Aluminium Anode	
Part no. CDA8-126-200H Type 2	Scale 1 : 2
Drawing No: CD1971	Rev 1 Sheet 1 of 1
Drawn by: B Linde	Date: 22JUL21
Mould No: 96	Strap Sample: 51