

This drawing is the property of Cathodic Anodes Australasia. To be used with permission only.
 This drawing becomes an uncontrolled document once issued as hard or electronic copy.
 Customer to confirm current revision of drawing prior to ordering.

CDQ
 CAST INDENTATION LETTERING

CDQ

DO NOT PAINT

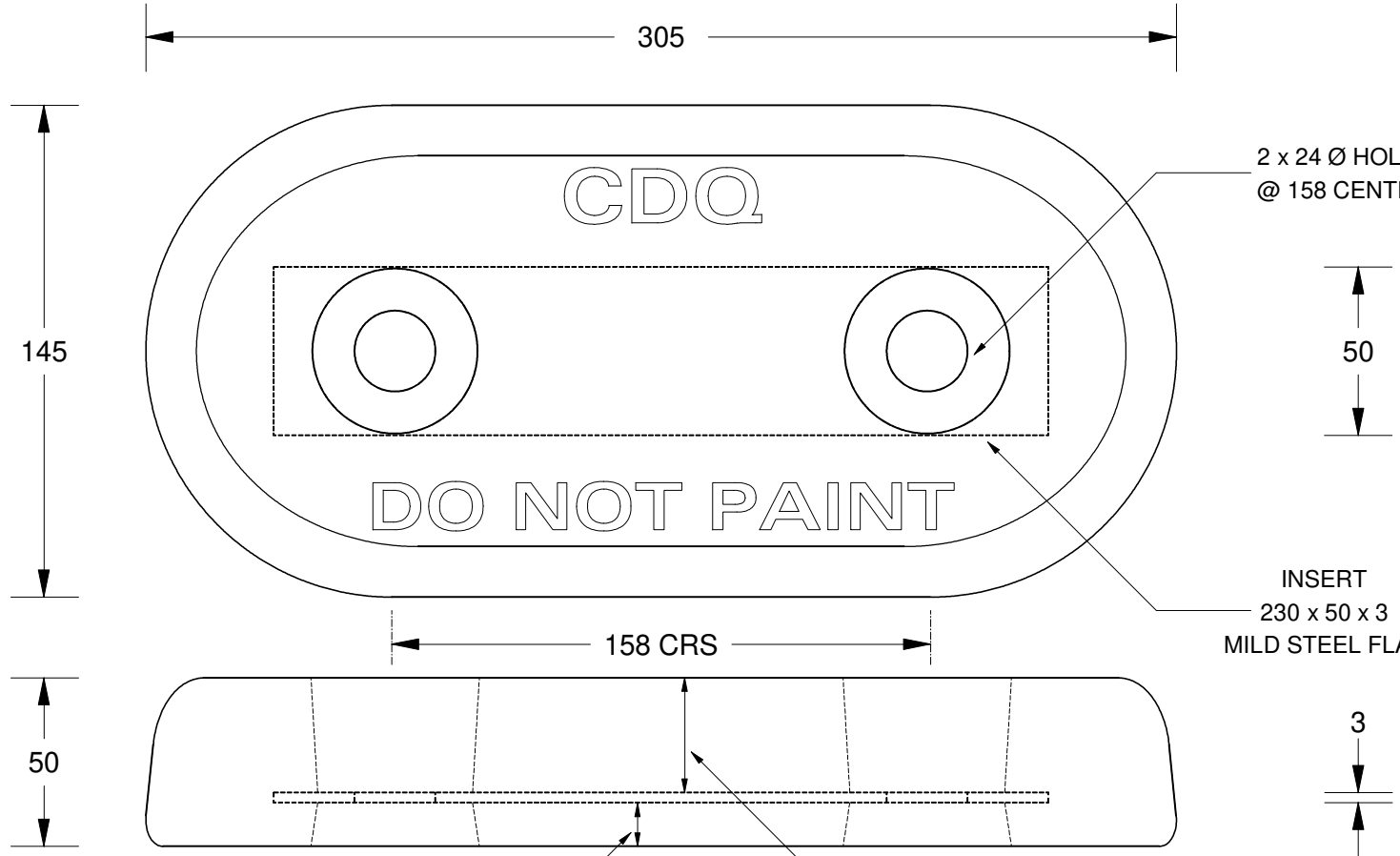
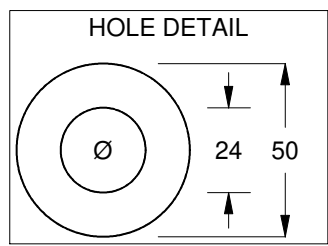
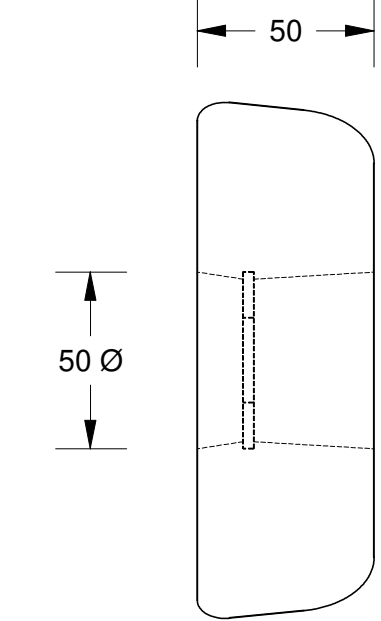
2 x 24 Ø HOLES
 @ 158 CENTRES

INSERT
 230 x 50 x 3
 MILD STEEL FLAT

Mounting Side 13

Consumable Side 34

All dimensions are in mm (nominal)



Chemical Composition Limits		Alloy:
Element	min.	max.
Zinc	2.0	6.0
Indium	0.01	0.02
Cadmium	-	0.005
Silicon	0.08	0.12
Iron	-	0.12
Magnesium	-	0.02
Titanium	-	0.02
Copper	-	0.006
Tin	-	0.02
Other Impurities	-	-
- each	-	0.02
- total	-	0.05
Aluminium	remainder	

A6

- Notes
- Anodes are cast to comply with CAA's standard casting tolerances
 - All sharp edges removed for safe handling
 - Anode insert material to meet relevant Australian/International specifications



Rev	Details of Change(s)	Date	Drawn	Verified
1	Cathodic Diecasting Original	22JUL21	BL	LS

Nett Weight Kg (nominal)	Gross Weight Kg (nominal)
4.8	5.1



cathodicanodes.com.au

Product Aluminium Anode	
Part no. CDA8-126-200H Type 1	Scale 1 : 2
Drawing No: CD1970	Rev 1 Sheet 1 of 1
Drawn by: B Linde	Date: 22JUL21
Mould No: 96	Strap Sample: 14

