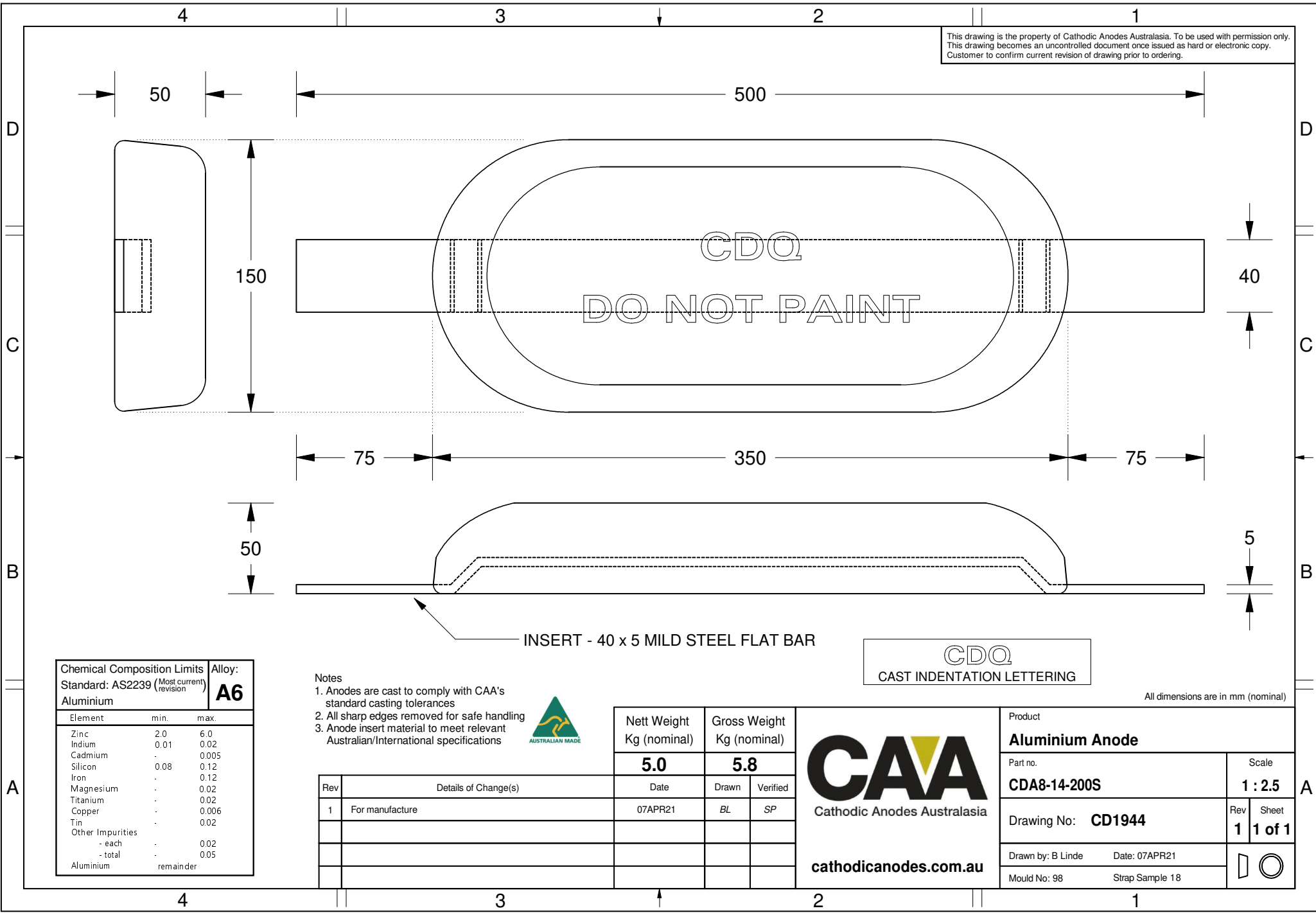


This drawing is the property of Cathodic Anodes Australasia. To be used with permission only. This drawing becomes an uncontrolled document once issued as hard or electronic copy. Customer to confirm current revision of drawing prior to ordering.



CDO  
DO NOT PAINT

INSERT - 40 x 5 MILD STEEL FLAT BAR

CDO  
CAST INDENTATION LETTERING

All dimensions are in mm (nominal)

Chemical Composition Limits		Alloy:
Element	min.	max.
Zinc	2.0	6.0
Indium	0.01	0.02
Cadmium	-	0.005
Silicon	0.08	0.12
Iron	-	0.12
Magnesium	-	0.02
Titanium	-	0.02
Copper	-	0.006
Tin	-	0.02
Other Impurities	-	-
- each	-	0.02
- total	-	0.05
Aluminium	remainder	

**A6**

- Notes
1. Anodes are cast to comply with CAA's standard casting tolerances
  2. All sharp edges removed for safe handling
  3. Anode insert material to meet relevant Australian/International specifications



Rev	Details of Change(s)	Date	Drawn	Verified
1	For manufacture	07APR21	BL	SP

Nett Weight Kg (nominal)	Gross Weight Kg (nominal)
<b>5.0</b>	<b>5.8</b>



cathodicanodes.com.au

Product <b>Aluminium Anode</b>		Scale <b>1 : 2.5</b>	
Part no. <b>CDA8-14-200S</b>		Rev <b>1</b>	Sheet <b>1 of 1</b>
Drawing No: <b>CD1944</b>			
Drawn by: B Linde      Date: 07APR21		Mould No: 98      Strap Sample 18	