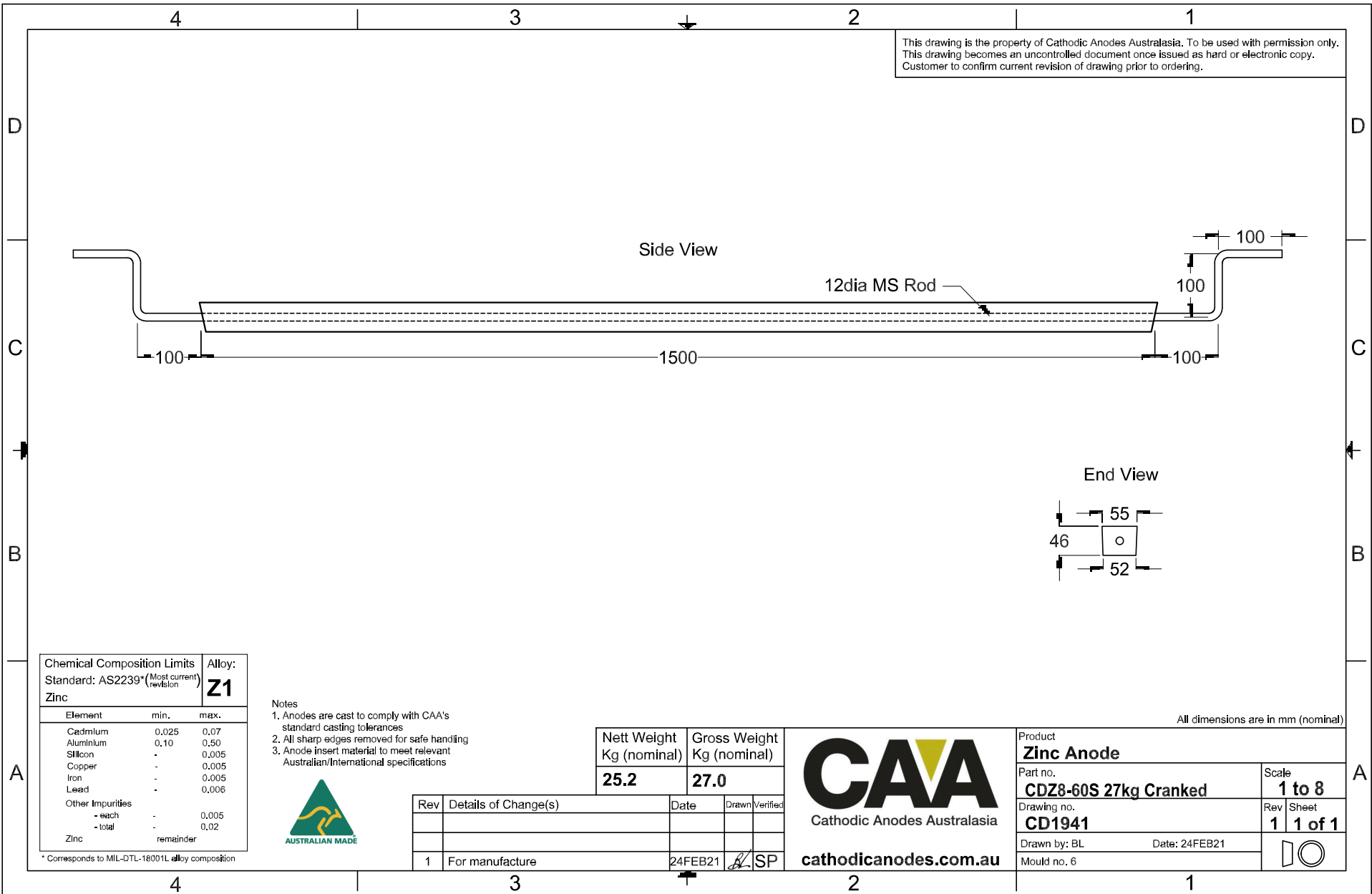


This drawing is the property of Cathodic Anodes Australasia. To be used with permission only. This drawing becomes an uncontrolled document once issued as hard or electronic copy. Customer to confirm current revision of drawing prior to ordering.



Chemical Composition Limits		Alloy:
Standard: AS2239* (Most current revision)		Z1
Zinc		
Element	min.	max.
Cadmium	0.025	0.07
Aluminium	0.10	0.50
Silicon	-	0.005
Copper	-	0.005
Iron	-	0.005
Lead	-	0.006
Other Impurities		
- each	-	0.005
- total	-	0.02
Zinc		remainder

- Notes
- Anodes are cast to comply with CAA's standard casting tolerances
 - All sharp edges removed for safe handling
 - Anode Insert material to meet relevant Australian/International specifications



Nett Weight Kg (nominal)	Gross Weight Kg (nominal)
25.2	27.0



cathodicanodes.com.au

Product Zinc Anode		All dimensions are in mm (nominal)	
Part no. CDZ8-60S 27kg Cranked	Scale 1 to 8		
Drawing no. CD1941	Rev Sheet 1 1 of 1		
Drawn by: BL	Date: 24FEB21		
Mould no. 6			

Rev	Details of Change(s)	Date	Drawn	Verified
1	For manufacture	24FEB21	BL	SP

* Corresponds to MIL-DTL-18001L alloy composition