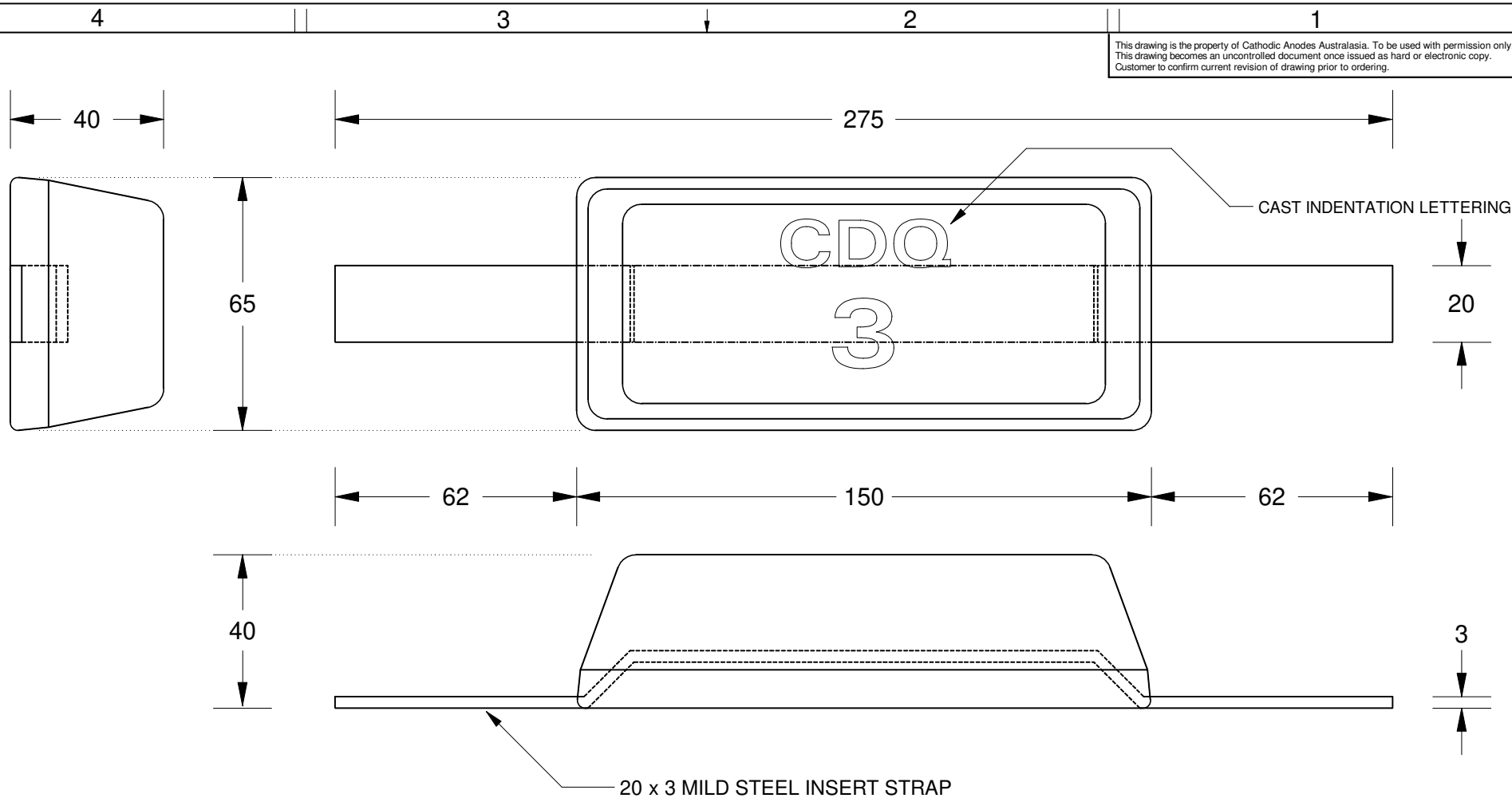


This drawing is the property of Cathodic Anodes Australasia. To be used with permission only. This drawing becomes an uncontrolled document once issued as hard or electronic copy. Customer to confirm current revision of drawing prior to ordering.



20 x 3 MILD STEEL INSERT STRAP

Chemical Composition Limits		Alloy:
Standard: AS2239 (Most current revision)		A6
Aluminium		
Element	min.	max.
Zinc	2.0	6.0
Indium	0.01	0.02
Cadmium	-	0.005
Silicon	0.08	0.12
Iron	-	0.12
Magnesium	-	0.02
Titanium	-	0.02
Copper	-	0.006
Tin	-	0.02
Other Impurities		
- each	-	0.02
- total	-	0.05
Aluminium	remainder	

Notes

- Anodes are cast to comply with CAA's standard casting tolerances
- All sharp edges removed for safe handling
- Anode insert material to meet relevant Australian/International specifications



All dimensions are in mm (nominal)

Rev	Details of Change(s)	Date	Drawn	Verified
1	For Manufacture	01 NOV 18	BL	R.G.

Nett Weight	Gross Weight
Kg (nominal)	Kg (nominal)
0.80	1.00



Cathodic Anodes Australasia

cathodicanodes.com.au

Product		Aluminium Anode	
Part no.	CDA2-63-1.60S	Scale	1 : 1.5
Drawing No:	CD1868	Rev	Sheet
		1	1 of 1
Drawn by: B Linde	Date: 01 NOV 18		
Mould No: 59	Strap Sample 58 (in MS)		