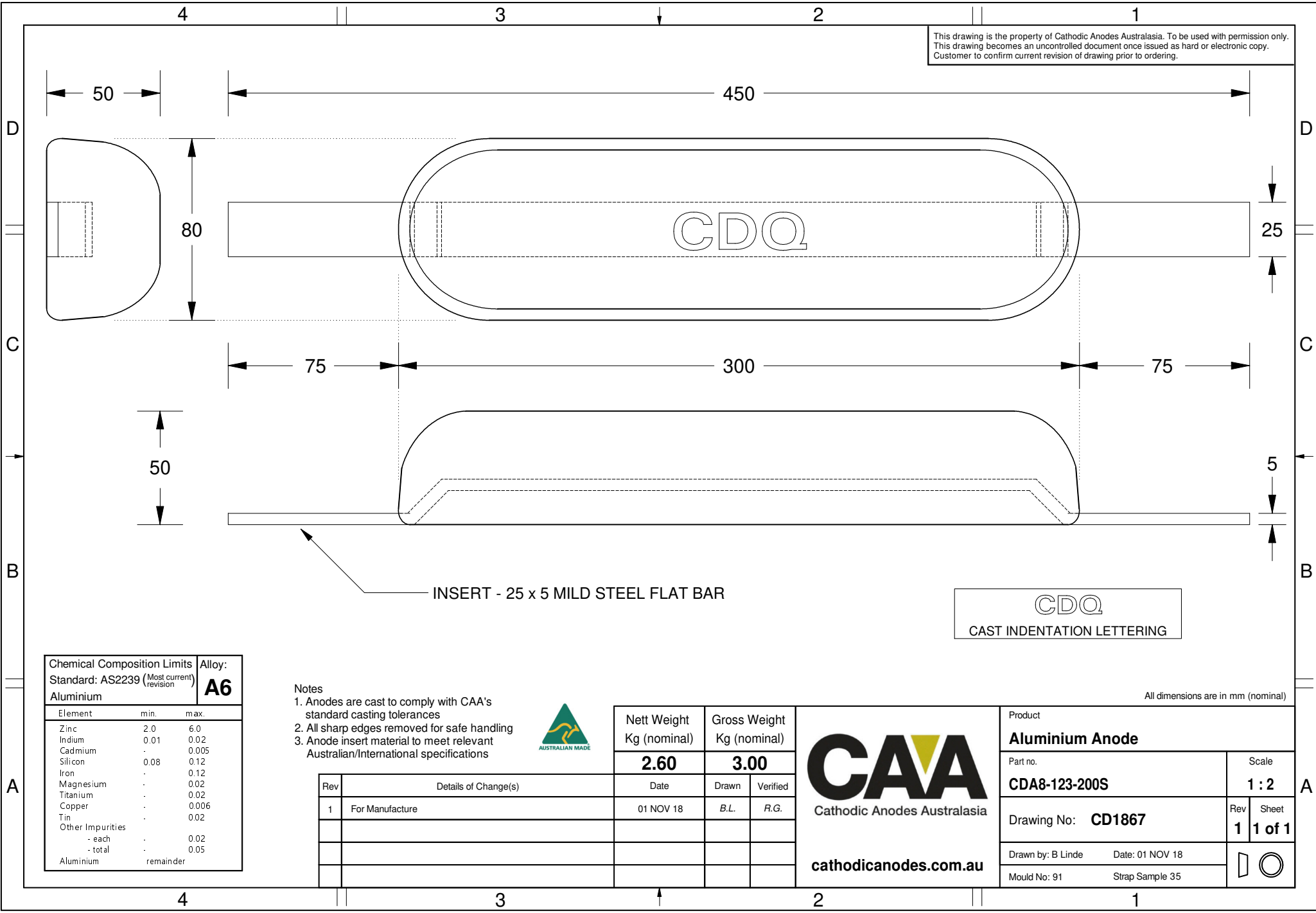


This drawing is the property of Cathodic Anodes Australasia. To be used with permission only.
 This drawing becomes an uncontrolled document once issued as hard or electronic copy.
 Customer to confirm current revision of drawing prior to ordering.



INSERT - 25 x 5 MILD STEEL FLAT BAR

CDQ
 CAST INDENTATION LETTERING

Chemical Composition Limits		Alloy:
Standard: AS2239 (Most current revision)		A6
Aluminium		
Element	min.	max.
Zinc	2.0	6.0
Indium	0.01	0.02
Cadmium	-	0.005
Silicon	0.08	0.12
Iron	-	0.12
Magnesium	-	0.02
Titanium	-	0.02
Copper	-	0.006
Tin	-	0.02
Other Impurities	-	-
- each	-	0.02
- total	-	0.05
Aluminium	remainder	-

- Notes
1. Anodes are cast to comply with CAA's standard casting tolerances
 2. All sharp edges removed for safe handling
 3. Anode insert material to meet relevant Australian/International specifications



Rev	Details of Change(s)	Date	Drawn	Verified
1	For Manufacture	01 NOV 18	B.L.	R.G.



cathodicanodes.com.au

Product		Scale	
Aluminium Anode		1 : 2	
Part no.	CDA8-123-200S	Rev	Sheet
Drawing No:	CD1867	1	1 of 1
Drawn by: B Linde	Date: 01 NOV 18		
Mould No: 91	Strap Sample 35		

All dimensions are in mm (nominal)