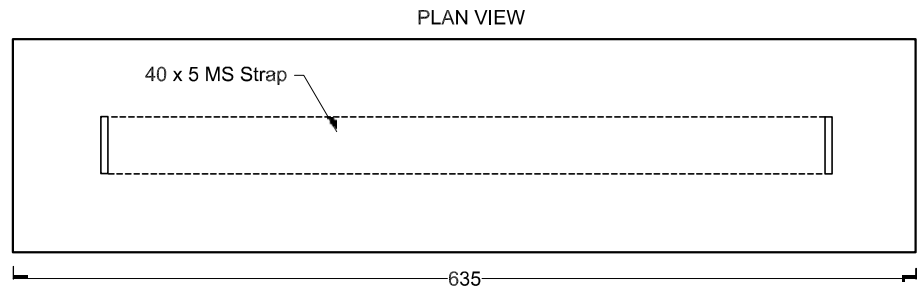
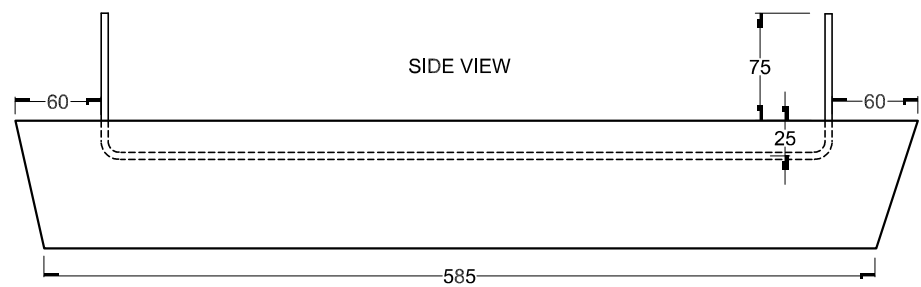
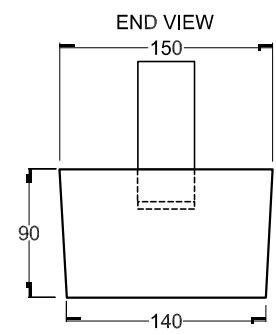


This drawing is the property of Cathodic Anodes Australasia. To be used with permission only. This drawing becomes an uncontrolled document once issued as hard or electronic copy. Customer to confirm current revision of drawing prior to ordering.



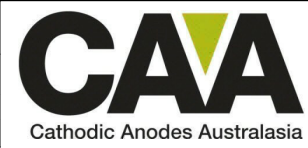
- Notes
1. Anodes are cast to comply with CAA's standard casting tolerances
  2. All sharp edges removed for safe handling
  3. Anode insert material to meet relevant Australian/International specifications

Chemical Composition Limits		Alloy:
Standard: AS2239 (Most current revision)		<b>A6</b>
Aluminium		
Element	min.	max.
Zinc	2.0	6.0
Indium	0.01	0.02
Cadmium	-	0.005
Silicon	0.08	0.12
Iron	-	0.12
Magnesium	-	0.02
Titanium	-	0.02
Copper	-	0.006
Tin	-	0.02
Other Impurities		
- each	-	0.02
- total	-	0.05
Aluminium	remainder	



Nett Weight Kg (nominal)	Gross Weight Kg (nominal)
<b>20.0</b>	<b>21.2</b>

Rev	Details of Change(s)	Date	Drawn	Verified
1	For manufacture	12APR17	<i>BL</i>	<i>JL</i>



cathodicanodes.com.au

Product <b>Aluminium Anode</b>		Scale <b>1 to 5</b>	
Part no. <b>CDA-20S Type 2 Modified Insert</b>		Rev Sheet <b>1 1 of 1</b>	
Drawing no. <b>CD1846</b>		Drawn by: BL Verified by: JL Date: 12APR17	
Mould no: 8			

All dimensions are in mm (nominal)