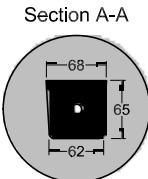
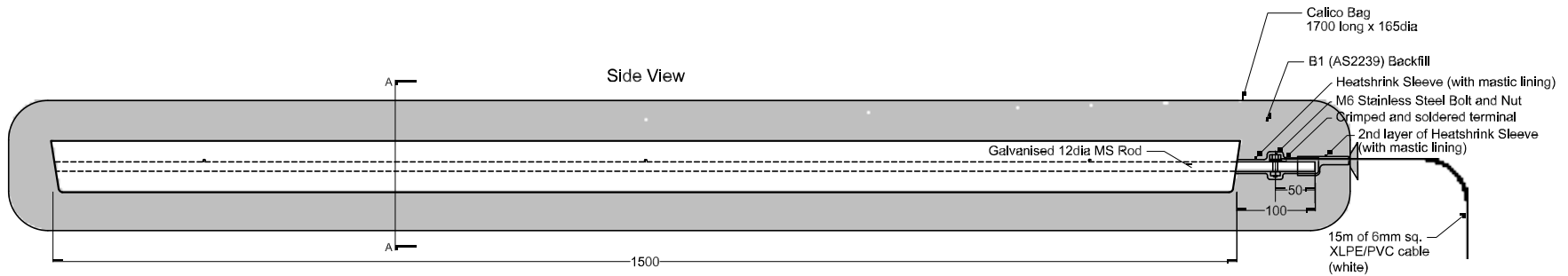


This drawing is the property of Cathodic Anodes Australasia. To be used with permission only. This drawing becomes an uncontrolled document once issued as hard or electronic copy. Customer to confirm current revision of drawing prior to ordering.



- Notes
1. Anodes are cast to comply with CAA's standard casting tolerances
 2. All sharp edges removed for safe handling
 3. Anode insert material to meet relevant Australian/International specifications

Chemical Composition Limits		Alloy: M1C
Element	min. max.	
Standard: ASTM B843 (Most current revision) Magnesium, High Potential		
Aluminium	- 0.01	
Zinc	- 0.02	
Manganese	0.50 1.3*	
Silicon	- 0.05	
Copper	- 0.02	
Iron	- 0.03	
Nickel	- 0.001	
Calcium	- 0.04	
Other Impurities		
- each	- 0.05	
- total	- 0.30	
Magnesium	remainder	

Anode Nett Weight Kg (nominal)	Anode Gross Wt Kg (nominal)	Packaged Wt Kg (nominal)
11.0	12.5	48.0

Rev	Details of Change(s)	Date	Drawn	Verified
2	Cable detail amended	06SEP19	BL	LS
1	For manufacture	07DEC16	BL	RG

CAA
Cathodic Anodes Australasia
cathodicanodes.com.au

All dimensions are in mm (nominal)

Product Magnesium Anode		Scale 1 to 8
Part no. CDM 11.0S (M1C) Packaged	Rev	Sheet
Drawing no. CD1841	2	1 of 1
Drawn by: BL Verified by: LS Date: 06SEP19		