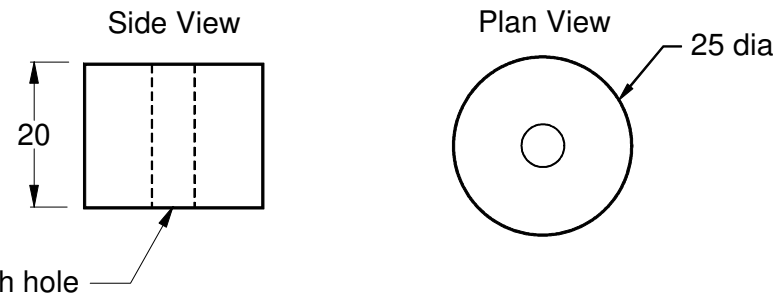


This drawing is the property of Cathodic Anodes Australasia. To be used with permission only. This drawing becomes an uncontrolled document once issued as hard or electronic copy. Customer to confirm current revision of drawing prior to ordering.



- Notes
1. Anodes are cast to comply with CAA's standard casting tolerances
  2. All sharp edges removed for safe handling
  3. Anode insert material to meet relevant Australian/International specifications

Chemical Composition Limits		Alloy:
Element	min.	max.
Standard: AS2239* (Most current revision)		<b>Z1</b>
Zinc		
Cadmium	0.025	0.07
Aluminium	0.10	0.50
Silicon	.	0.005
Copper	.	0.005
Iron	.	0.005
Lead	.	0.006
Other Impurities		
- each	.	0.005
- total	.	0.02
Zinc	remainder	

\* Corresponds to MIL-DTL-18001L alloy composition

Nett Weight Kg (nominal)	Gross Weight Kg (nominal)
	<b>0.07</b>

**CAA**  
Cathodic Anodes Australasia  
cathodicanodes.com.au

Product <b>Zinc Anode</b>		Scale <b>1 to 1</b>	
Part no. <b>CDZ9-152B</b>		Rev Sheet <b>1 1 of 1</b>	
Drawing no. <b>CD1736</b>		Date: 18MAR15	
Drawn by: BL Verified by: JL		Date: 18MAR15	

Rev	Details of Change(s)	Date	Drawn	Verified
1	For manufacture	18MAR15	BL	JL

All dimensions are in mm (nominal)