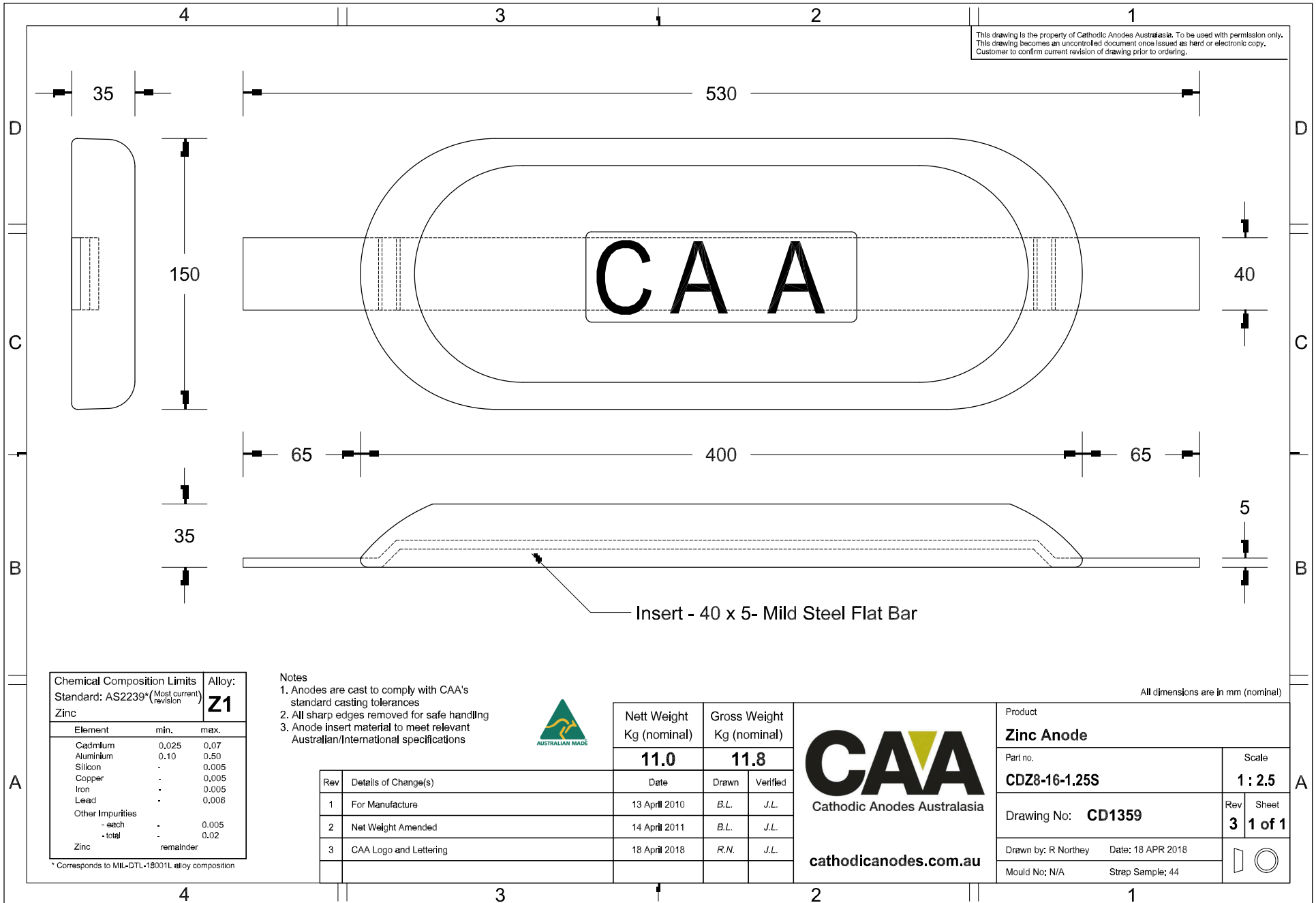


This drawing is the property of Cathodic Anodes Australasia. To be used with permission only.
 This drawing becomes an uncontrolled document once issued as hard or electronic copy.
 Customer to confirm current revision of drawing prior to ordering.



Insert - 40 x 5- Mild Steel Flat Bar

All dimensions are in mm (nominal)

Chemical Composition Limits		Alloy: Z1
Element	min. max.	
Standard: AS2239* (Most current revision)		
Zinc		
Cadmium	0.025 0.07	
Aluminium	0.10 0.50	
Silicon	- 0.005	
Copper	- 0.005	
Iron	- 0.005	
Lead	- 0.006	
Other Impurities		
- each	- 0.005	
- total	- 0.02	
Zinc	remainder	

* Corresponds to MIL-DTL-18001L alloy composition

Notes

- Anodes are cast to comply with CAA's standard casting tolerances
- All sharp edges removed for safe handling
- Anode insert material to meet relevant Australian/International specifications



Rev	Details of Change(s)	Nett Weight		Gross Weight	
		Kg (nominal)		Kg (nominal)	
		11.0		11.8	
1	For Manufacture	13 April 2010	B.L.	J.L.	
2	Net Weight Amended	14 April 2011	B.L.	J.L.	
3	CAA Logo and Lettering	18 April 2018	R.N.	J.L.	



Product		Zinc Anode	
Part no.	CDZ8-16-1.25S	Scale	1 : 2.5
Drawing No:	CD1359	Rev	3
		Sheet	1 of 1
Drawn by: R Northey	Date: 18 APR 2018		
Mould No: N/A	Strap Sample: 44		