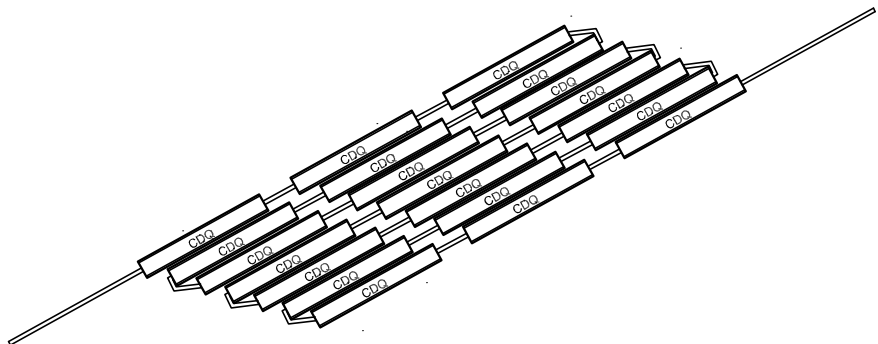
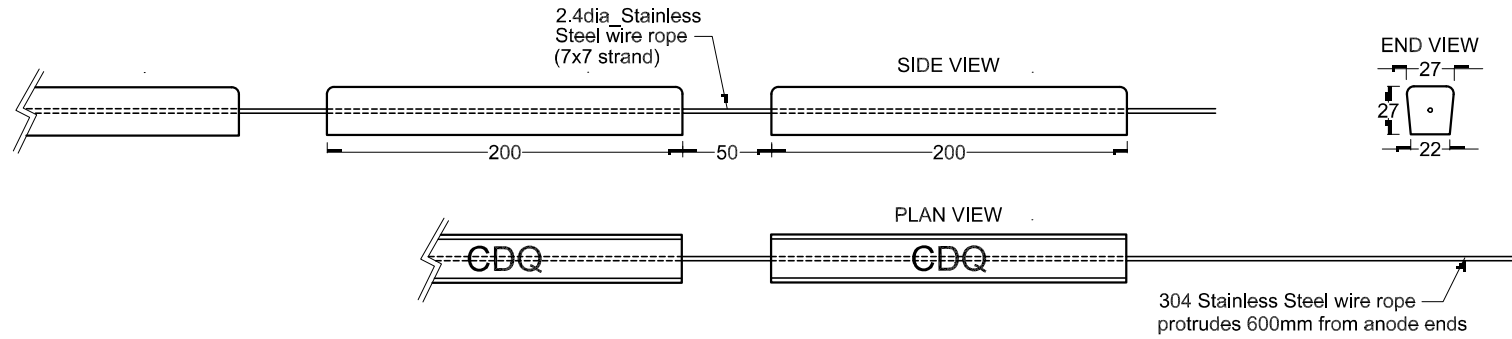


This drawing is the property of Cathodic Anodes Australasia. To be used with permission only. This drawing becomes an uncontrolled document once issued as hard or electronic copy. Customer to confirm current revision of drawing prior to ordering.



Chemical Composition Limits		Alloy:
Standard: AS2239* (Most current revision)		Z1
Zinc		
Element	min.	max.
Cadmium	0.025	0.07
Aluminium	0.10	0.50
Silicon	-	0.005
Copper	-	0.005
Iron	-	0.005
Lead	-	0.006
Other Impurities		
- each	-	0.005
- total	-	0.02
Zinc		remainder

Notes

1. Anodes are cast to comply with CAA's standard casting tolerances
2. All sharp edges removed for safe handling
3. Anode insert material to meet relevant Australian/International specifications



Nett Weight Kg (nominal)
0.95 per segment

Rev	Details of Change(s)	Date	Insp/Verified
3	Gap reduced to 50mm	28SEP16	BL
2	Wire dimensions revised	16AUG10	BL
1	For manufacture	11MAR10	BL

CAA
Cathodic Anodes Australasia
cathodicanodes.com.au

All dimensions are in mm (nominal)

Product Zinc Anode		Scale 1 to 4	
Part no. CDZ7-811 Zinc Anode String		Rev	Sheet
Drawing no. CD1344		3	1 of 1
Drawn by: BL Verified by: JL Date: 28SEP16			

* Corresponds to MIL-DTL-18001L alloy composition