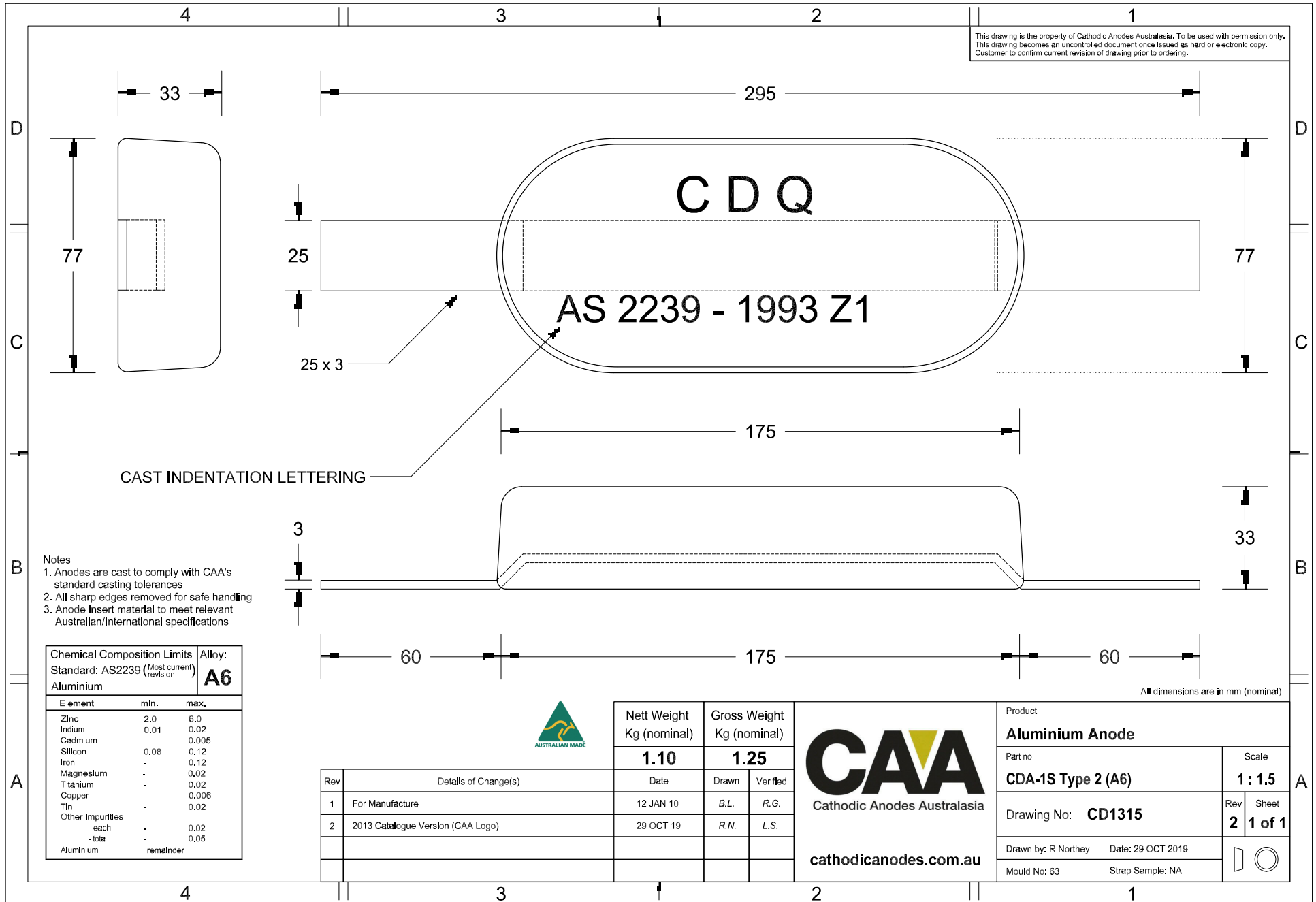


This drawing is the property of Cathodic Anodes Australasia. To be used with permission only.  
 This drawing becomes an uncontrolled document once issued as hard or electronic copy.  
 Customer to confirm current revision of drawing prior to ordering.



- Notes
1. Anodes are cast to comply with CAA's standard casting tolerances
  2. All sharp edges removed for safe handling
  3. Anode insert material to meet relevant Australian/International specifications

Chemical Composition Limits		Alloy:
Element	min.	max.
Standard: AS2239 (Most current revision)		<b>A6</b>
Aluminium		
Zinc	2.0	6.0
Indium	0.01	0.02
Cadmium	-	0.005
Silicon	0.08	0.12
Iron	-	0.12
Magnesium	-	0.02
Titanium	-	0.02
Copper	-	0.006
Tin	-	0.02
Other Impurities		
- each	-	0.02
- total	-	0.05
Aluminium	remainder	



Rev	Details of Change(s)	Date	Drawn	Verified
1	For Manufacture	12 JAN 10	B.L.	R.G.
2	2013 Catalogue Version (CAA Logo)	29 OCT 19	R.N.	L.S.

Nett Weight Kg (nominal)	Gross Weight Kg (nominal)
<b>1.10</b>	<b>1.25</b>



Product <b>Aluminium Anode</b>	
Part no. <b>CDA-1S Type 2 (A6)</b>	Scale <b>1 : 1.5</b>
Drawing No: <b>CD1315</b>	Rev Sheet <b>2 1 of 1</b>
Drawn by: R Northey Date: 29 OCT 2019	
Mould No: 63 Strap Sample: NA	

All dimensions are in mm (nominal)