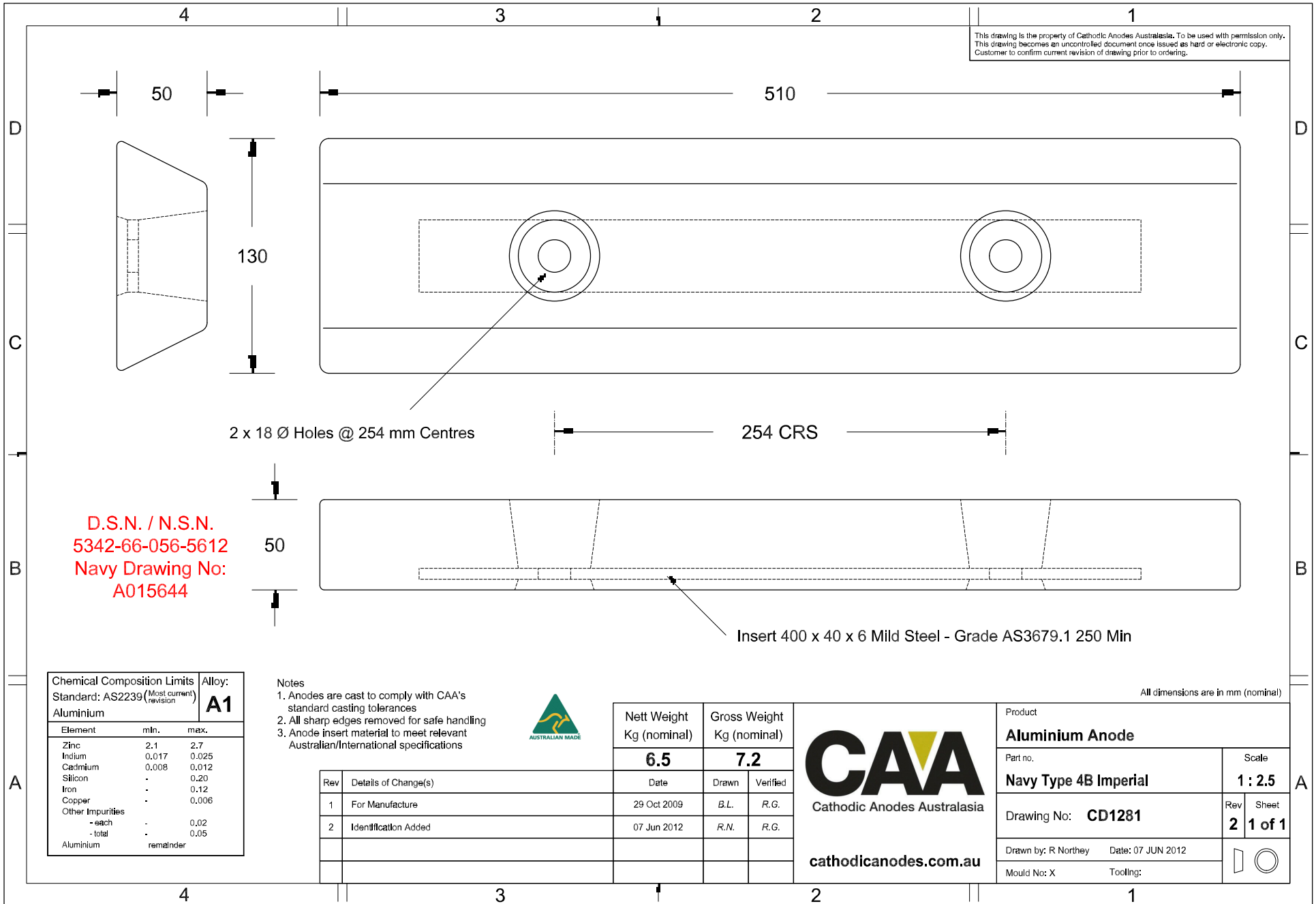


This drawing is the property of Cathodic Anodes Australasia. To be used with permission only.
 This drawing becomes an uncontrolled document once issued as hard or electronic copy.
 Customer to confirm current revision of drawing prior to ordering.



D.S.N. / N.S.N.
5342-66-056-5612
Navy Drawing No:
A015644


Chemical Composition Limits			Alloy:
Standard: AS2239 (Most current revision)			A1
Element	min.	max.	
Zinc	2.1	2.7	
Indium	0.017	0.025	
Cadmium	0.008	0.012	
Silicon	-	0.20	
Iron	-	0.12	
Copper	-	0.006	
Other Impurities			
- each	-	0.02	
- total	-	0.05	
Aluminium	remainder		

- Notes
1. Anodes are cast to comply with CAA's standard casting tolerances
 2. All sharp edges removed for safe handling
 3. Anode insert material to meet relevant Australian/International specifications



Rev	Details of Change(s)	Date	Drawn	Verified
1	For Manufacture	29 Oct 2009	B.L.	R.G.
2	Identification Added	07 Jun 2012	R.N.	R.G.


Cathodic Anodes Australasia
cathodicanodes.com.au

Product		Aluminium Anode	
Part no.	Navy Type 4B Imperial	Scale	1 : 2.5
Drawing No:	CD1281	Rev	2
		Sheet	1 of 1
Drawn by: R Northey	Date: 07 JUN 2012		
Mould No: X	Tooling:		

All dimensions are in mm (nominal)