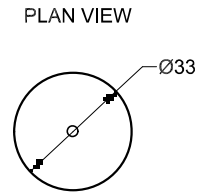
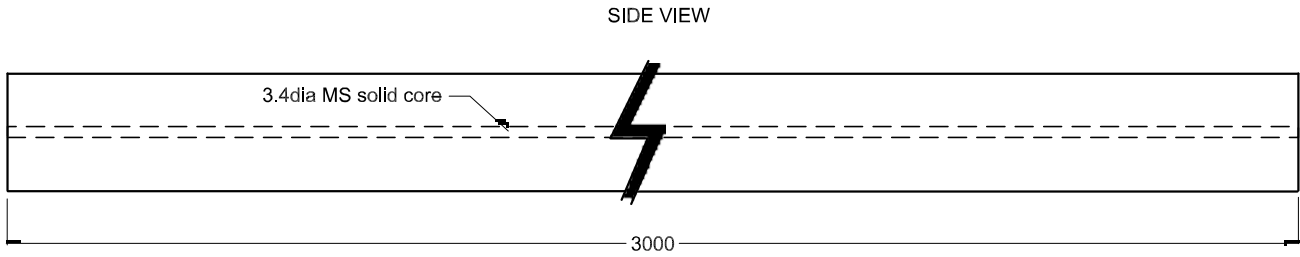


This drawing is the property of Cathodic Anodes Australasia. To be used with permission only. This drawing becomes an uncontrolled document once issued as hard or electronic copy. Customer to confirm current revision of drawing prior to ordering.



Chemical Composition Limits			Alloy: <b>M1C</b>
Standard: ASTM B843 (Most current revision)			
Magnesium, High Potential			
Element	min.	max.	
Aluminium	-	0.01	
Zinc	-	0.02	
Manganese	0.50	1.3*	
Silicon	-	0.05	
Copper	-	0.02	
Iron	-	0.03	
Nickel	-	0.001	
Calcium	-	0.04	
Other Impurities			
- each	-	0.05	
- total	-	0.30	
Magnesium	remainder		

- Notes
1. Anodes are cast to comply with CAA's standard casting tolerances
  2. All sharp edges removed for safe handling
  3. Anode insert material to meet relevant Australian/International specifications

Rev	Details of Change(s)	Date	Initials
1	For manufacture	14JUL09	BL
2	Steel core detail revised	15JUL09	BL
3	M1C Specification supersedes M1	19MAY16	R.N.

**CAA**  
Cathodic Anodes Australasia  
cathodicanodes.com.au

Product <b>Magnesium Anode</b>		Scale <b>1 to 2</b>
Part no. <b>CDMR-M1-33-3000B</b>	Rev Sheet <b>3 1 of 1</b>	
Drawing no. <b>CD1229</b>	Drawn by: BL	Date: 15JUL09
All dimensions are in mm (nominal)		

