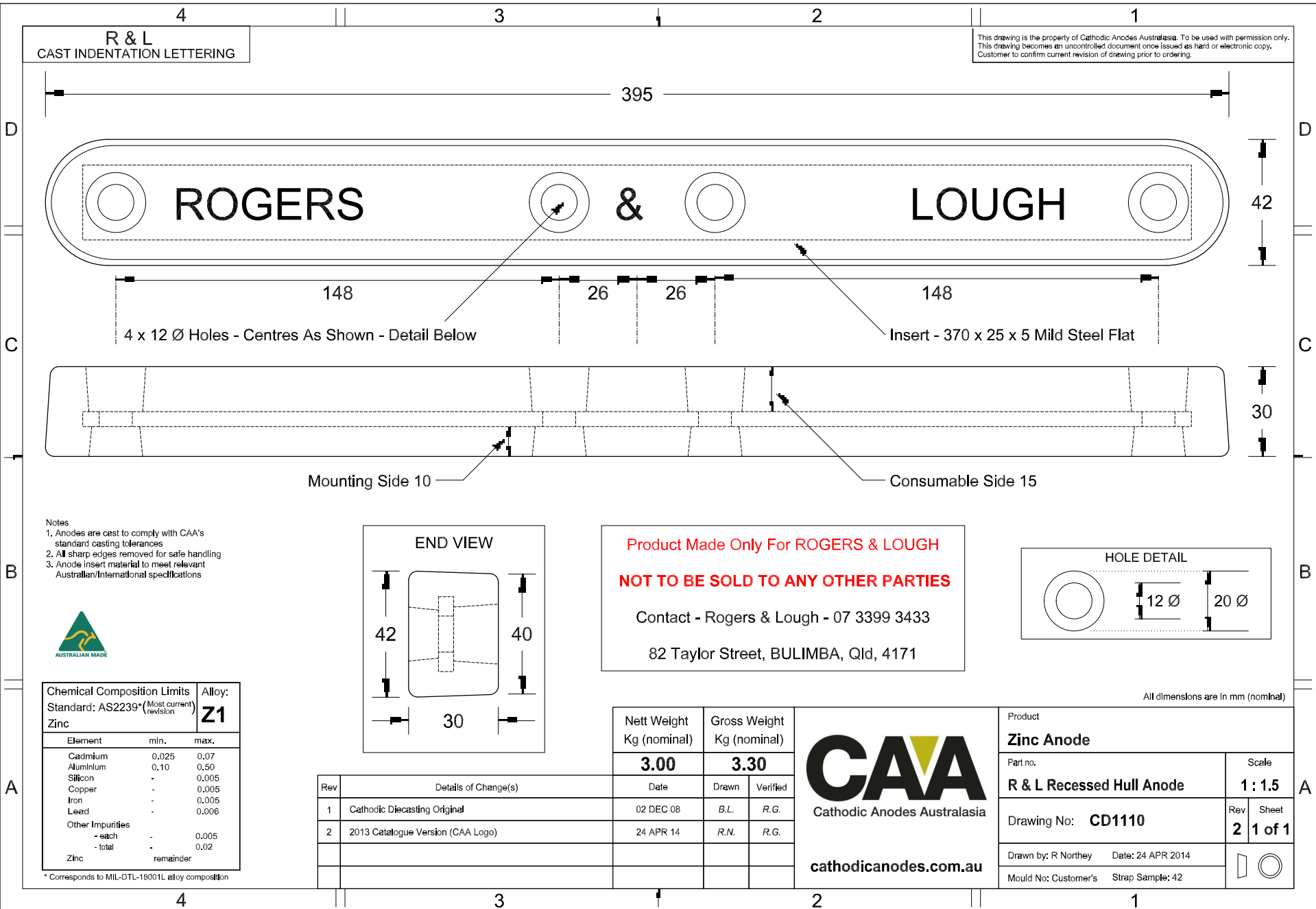


R & L  
CAST INDENTATION LETTERING

This drawing is the property of Cathodic Anodes Australasia. To be used with permission only.  
This drawing becomes an uncontrolled document once issued as hard or electronic copy.  
Customer to confirm current revision of drawing prior to ordering.

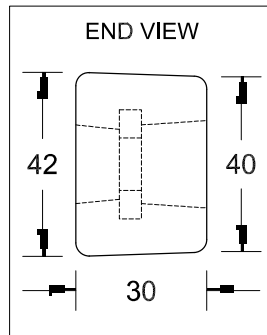


- Notes
1. Anodes are cast to comply with CAA's standard casting tolerances
  2. All sharp edges removed for safe handling
  3. Anode insert material to meet relevant Australian/International specifications

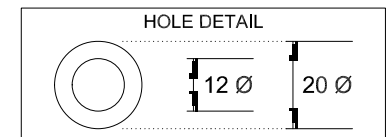


Chemical Composition Limits		Alloy:
Standard: AS2239* (Most current revision)		Z1
Element	min.	max.
Cadmium	0.025	0.07
Aluminium	0.10	0.50
Silicon	-	0.005
Copper	-	0.005
Iron	-	0.005
Lead	-	0.006
Other Impurities		
- each	-	0.005
- total	-	0.02
Zinc	remainder	

\* Corresponds to MIL-DTL-18001L alloy composition



**Product Made Only For ROGERS & LOUGH**  
**NOT TO BE SOLD TO ANY OTHER PARTIES**  
Contact - Rogers & Lough - 07 3399 3433  
82 Taylor Street, BULIMBA, Qld, 4171



All dimensions are in mm (nominal)

Rev	Details of Change(s)	Date	Drawn	Verified
1	Cathodic Diecasting Original	02 DEC 08	B.L.	R.G.
2	2013 Catalogue Version (CAA Logo)	24 APR 14	R.N.	R.G.

Nett Weight	Gross Weight
Kg (nominal)	Kg (nominal)
<b>3.00</b>	<b>3.30</b>



Product		Zinc Anode	
Part no.	R & L Recessed Hull Anode	Scale	1 : 1.5
Drawing No:	CD1110	Rev	2
		Sheet	1 of 1
Drawn by:	R Northey	Date:	24 APR 2014
Mould No:	Customer's	Strap Sample:	42