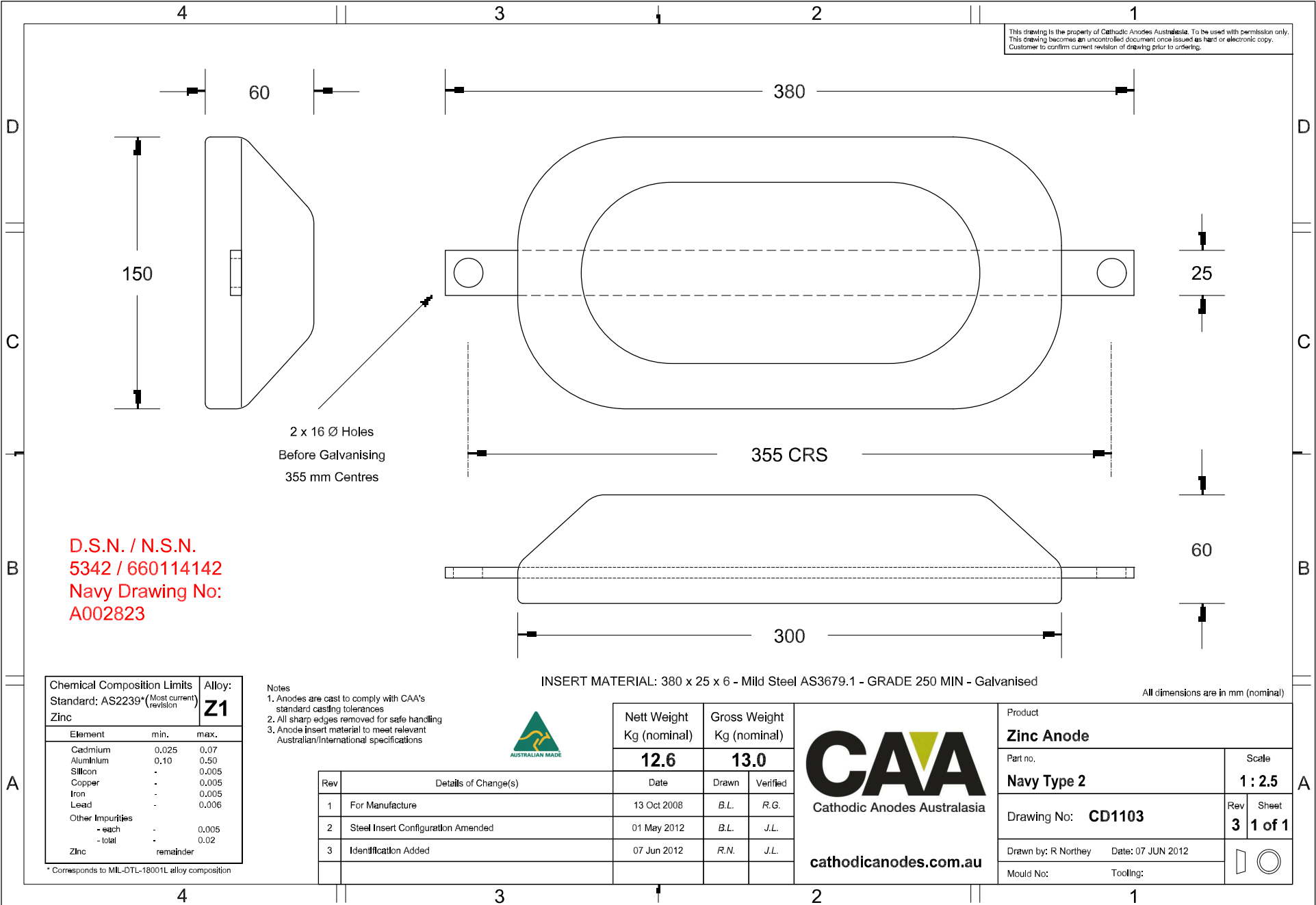


This drawing is the property of Cathodic Anodes Australasia. To be used with permission only. This drawing becomes an uncontrolled document once issued as hard or electronic copy. Customer to confirm current revision of drawing prior to ordering.



D.S.N. / N.S.N.
5342 / 660114142
Navy Drawing No:
A002823

2 x 16 Ø Holes
Before Galvanising
355 mm Centres

INSERT MATERIAL: 380 x 25 x 6 - Mild Steel AS3679.1 - GRADE 250 MIN - Galvanised

All dimensions are in mm (nominal)

Chemical Composition Limits		Alloy:
Standard: AS2239* (Most current revision)		Z1
Element	min.	max.
Cadmium	0.025	0.07
Aluminium	0.10	0.50
Silicon	-	0.005
Copper	-	0.005
Iron	-	0.005
Lead	-	0.006
Other Impurities		
- each	-	0.005
- total	-	0.02
Zinc		remainder

* Corresponds to MIL-DTL-18001L alloy composition

- Notes
1. Anodes are cast to comply with CAA's standard casting tolerances
 2. All sharp edges removed for safe handling
 3. Anode insert material to meet relevant Australian/International specifications



Rev	Details of Change(s)	Date	Nett Weight		Gross Weight	
			Kg (nominal)		Kg (nominal)	
			12.6		13.0	
1	For Manufacture	13 Oct 2008		B.L.	R.G.	
2	Steel Insert Configuration Amended	01 May 2012		B.L.	J.L.	
3	Identification Added	07 Jun 2012		R.N.	J.L.	

CAA
Cathodic Anodes Australasia
cathodicanodes.com.au

Product		Zinc Anode	
Part no.	Navy Type 2	Scale	1 : 2.5
Drawing No:	CD1103	Rev	3
		Sheet	1 of 1
Drawn by: R Northey	Date: 07 JUN 2012		
Mould No:	Tooling:		