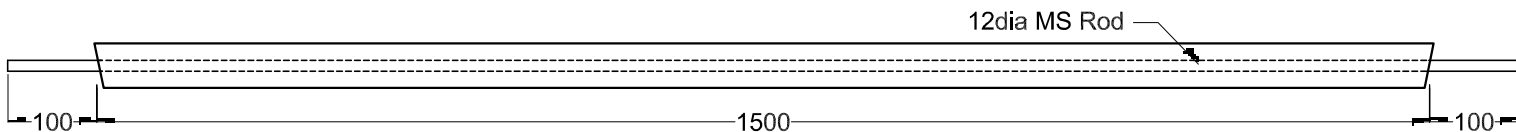
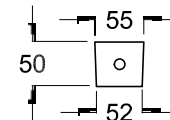


This drawing is the property of Cathodic Anodes Australasia. To be used with permission only.  
 This drawing becomes an uncontrolled document once issued as hard or electronic copy.  
 Customer to confirm current revision of drawing prior to ordering.

Side View



End View



All dimensions are in mm (nominal)

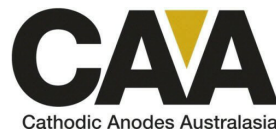
Chemical Composition Limits			Alloy: <b>A1</b>
Standard: AS2239 (Most current revision)			
Element	min.	max.	
Zinc	2.1	2.7	
Indium	0.017	0.025	
Cadmium	0.008	0.012	
Silicon	-	0.20	
Iron	-	0.12	
Copper	-	0.006	
Other Impurities			
- each	-	0.02	
- total	-	0.05	
Aluminium	remainder		

Notes

1. Anodes are cast to comply with CAA's standard casting tolerances
2. All sharp edges removed for safe handling
3. Anode insert material to meet relevant Australian/International specifications



Nett Weight Kg (nominal)	Gross Weight Kg (nominal)
<b>10.25</b>	<b>11.80</b>



[cathodicanodes.com.au](http://cathodicanodes.com.au)

Rev	Details of Change(s)	Date	Drawn	Verified
2	CAA logo	15APR14	BL	BL
1	For manufacture	09OCT08	BL	BL

Product <b>Aluminium Anode</b>		Scale <b>1 to 8</b>
Part no. <b>CDA-10S Type1</b>		Rev Sheet <b>2 1 of 1</b>
Drawing no. <b>CD1099</b>		Drawn by: BL Verified by: JL Date: 15APR14
Mould no. 6		