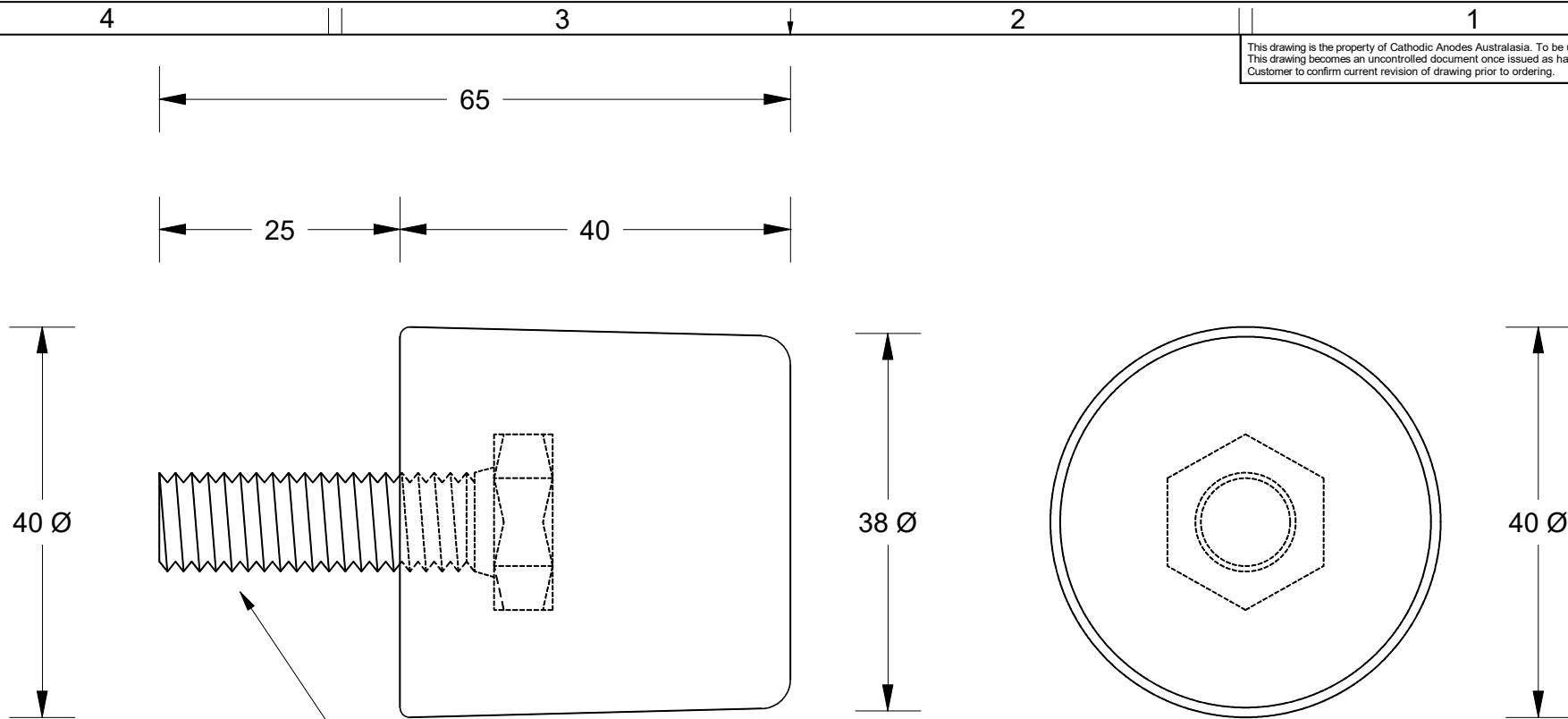


This drawing is the property of Cathodic Anodes Australasia. To be used with permission only.
 This drawing becomes an uncontrolled document once issued as hard or electronic copy.
 Customer to confirm current revision of drawing prior to ordering.



M10 Stainless Steel STUD

IDENTICAL PART = CDZ6-40B Type 1

All dimensions are in mm (nominal)

Chemical Composition Limits			Alloy:
Standard: AS2239* (Most current revision)			Z1
Zinc			
Element	min.	max.	
Cadmium	0.025	0.07	
Aluminium	0.10	0.50	
Silicon	-	0.005	
Copper	-	0.005	
Iron	-	0.005	
Lead	-	0.006	
Other Impurities			
- each	-	0.005	
- total	-	0.02	
Zinc	remainder		

* Corresponds to MIL-DTL-18001L alloy composition

Notes

1. Anodes are cast to comply with CAA's standard casting tolerances
2. All sharp edges removed for safe handling
3. Anode insert material to meet relevant Australian/International specifications



Rev	Details of Change(s)	Date	Drawn	Verified
1	Cathodic Diecasting Original	10 August 2011	R.N.	R.G.
2	2013 Catalogue Version (CAA Logo)	20 March 2015	R.N.	R.G.

Nett Weight Kg (nominal)	Gross Weight Kg (nominal)
0.33	0.35



Cathodic Anodes Australasia

cathodicanodes.com.au

Product Zinc Anode		Scale 1.5 : 1	
Part no. CDZ9-084		Rev 2	Sheet 1 of 1
Drawing No: CD3094		Drawn by: R Northey Date: 20 March 2015	